

WORKSHOP TEMÁTICO 1

MISSÕES NO HORIZONTE EUROPA: MISSÃO ADAPTAÇÃO CLIMÁTICA E TRANSFORMAÇÃO SOCIAL

Sessão online de informação e de discussão
com a comunidade nacional

16 de Junho | 14:00-15:00

A sessão terá início dentro de momentos.
Por favor, aguarde com o microfone e o vídeo desligados.
Esta sessão irá ser gravada apenas para efeitos de reporte.
Os slides apresentados serão disponibilizados após o evento.

AGENDA

14:00-14:05

Boas-vindas

Cristina Gouveia, Agência Nacional de Inovação

14:05-14:20

Apresentação da Missão Clima e do seu *Roadmap*

Helena Freitas, Universidade de Coimbra,
Mission Board member, Missão Clima

14:20-14:50

Interação com os *stakeholders*

14:50-15:00

Conclusões e encerramento

Helena Freitas, Universidade de Coimbra,
Mission Board member, Missão Clima

Pedidos para o bom funcionamento da sessão:

- Por favor, mantenha o microfone e o vídeo desligados.
- Quando quiser colocar uma questão, por favor, utilize **APENAS** o *chat* e identifique-se com primeiro e último nome e organização que representa
- O moderador da sessão irá selecionar as perguntas a colocar ao orador por ordem de chegada e/ou relevância para a sessão.
- Se, devido a limitações de tempo, não for possível responder à sua questão, deverá endereça-la a cristina.gouveia@ani.pt.

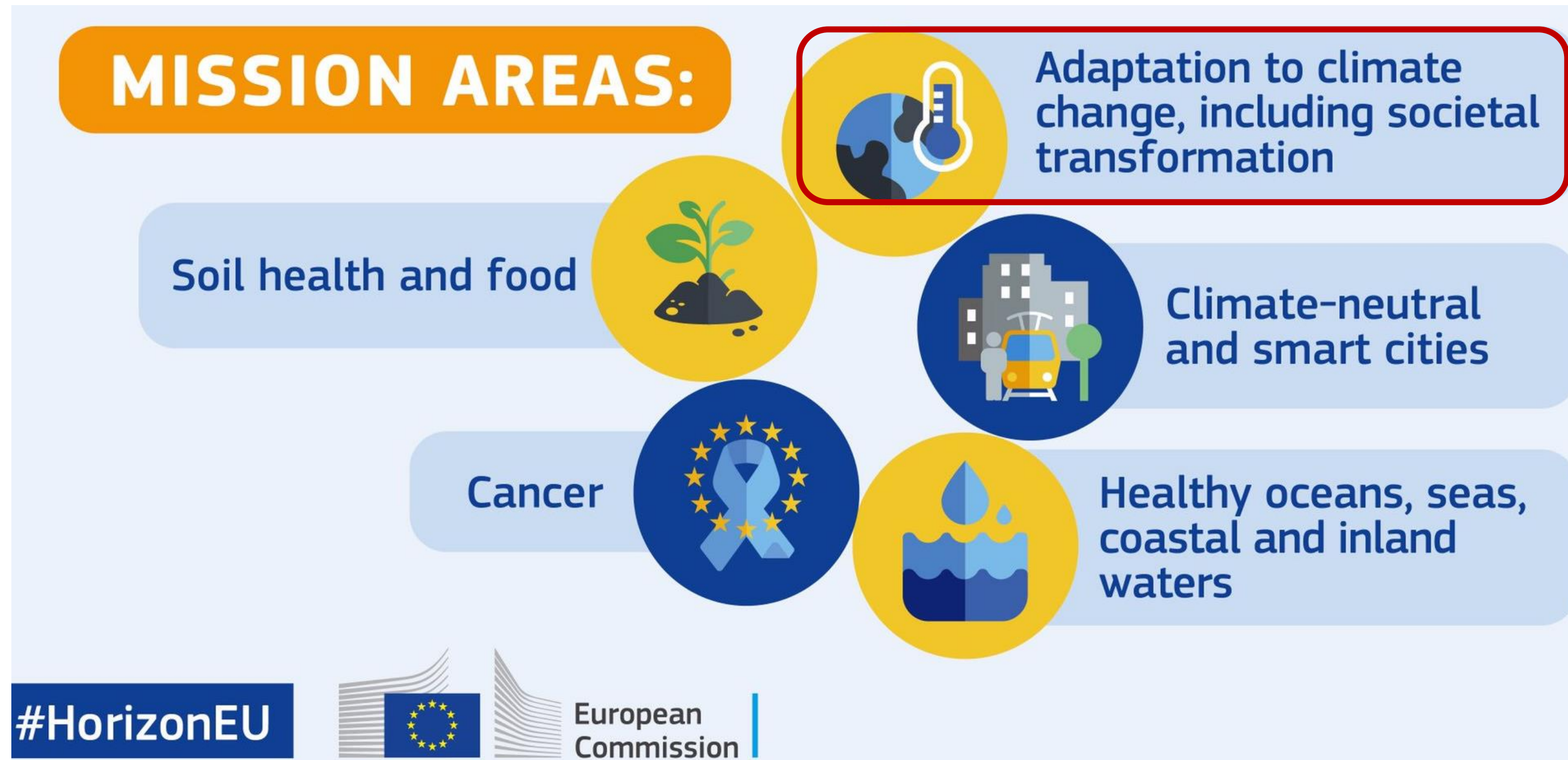
Horizon Europe Mission Climate Adaptation

**ACCELERATING THE
TRANSITION TO A
CLIMATE PREPARED AND
RESILIENT EUROPE**



Horizon Europe Missions

- Intended to achieve **ambitious** and **inspirational** goals
- With a **clear direction**: targeted, measurable and time-bound
- With **impact** for society and policy making
- **Engage citizens** in co-designing, co-creating, co-implementing and co-assessing missions



Members of the Mission Board

Title	First Name	Last Name	Affiliation	
Ms	Connie	Hedegaard	Former European Commissioner for Climate Action	<u>Chairperson</u>
Prof.	Jean-Pascal	van Ypersele	Catholic University of Louvain	<u>Liaison to EP</u>
Prof. Dr.	Daniela	Jacob	Climate Service Center Germany (GERICS)	
Ms	Ann	Runnel	Reverse Resources	
Dr.	Asunción	T. Lera St. Clair	Det Norske Veritas, and Barcelona Supercomputing Centre	<u>Lead Citizen Engagement</u>
Mr	Mathieu	Cornieti	Impact Partners	
Prof.	Mirela	Holy	VERN University of Applied Sciences	
Prof.	Kevin	O'Connor	University College Dublin	
Mr	Mark Scicluna	Bartoli	Bank of Valletta	<u>Liaison to MS</u>
Mr	Hein	Pieper	Dutch Water Authorities	
Prof.	Helena	Freitas	University of Coimbra	
Prof. Dr.	Johan	Rockström	Potsdam Institute for Climate Impact Research (PIK)	
Dr.	Jaroslav	Mysiak	Euro - Mediterranean Centre on Climate Change (CMCC)	<u>Rapporteur</u>
Prof.	Virginia	Murray	Global Disaster Risk Reduction for Public Health England	
Dr.	Per	Espen Stoknes	BI – Norwegian Business School	

Vision

ACCELERATING THE
TRANSITION TO A
CLIMATE PREPARED
AND RESILIENT EUROPE

Turning the urgent challenge of
adapting to climate change into an
opportunity to make Europe more
resilient, climate prepared and fair

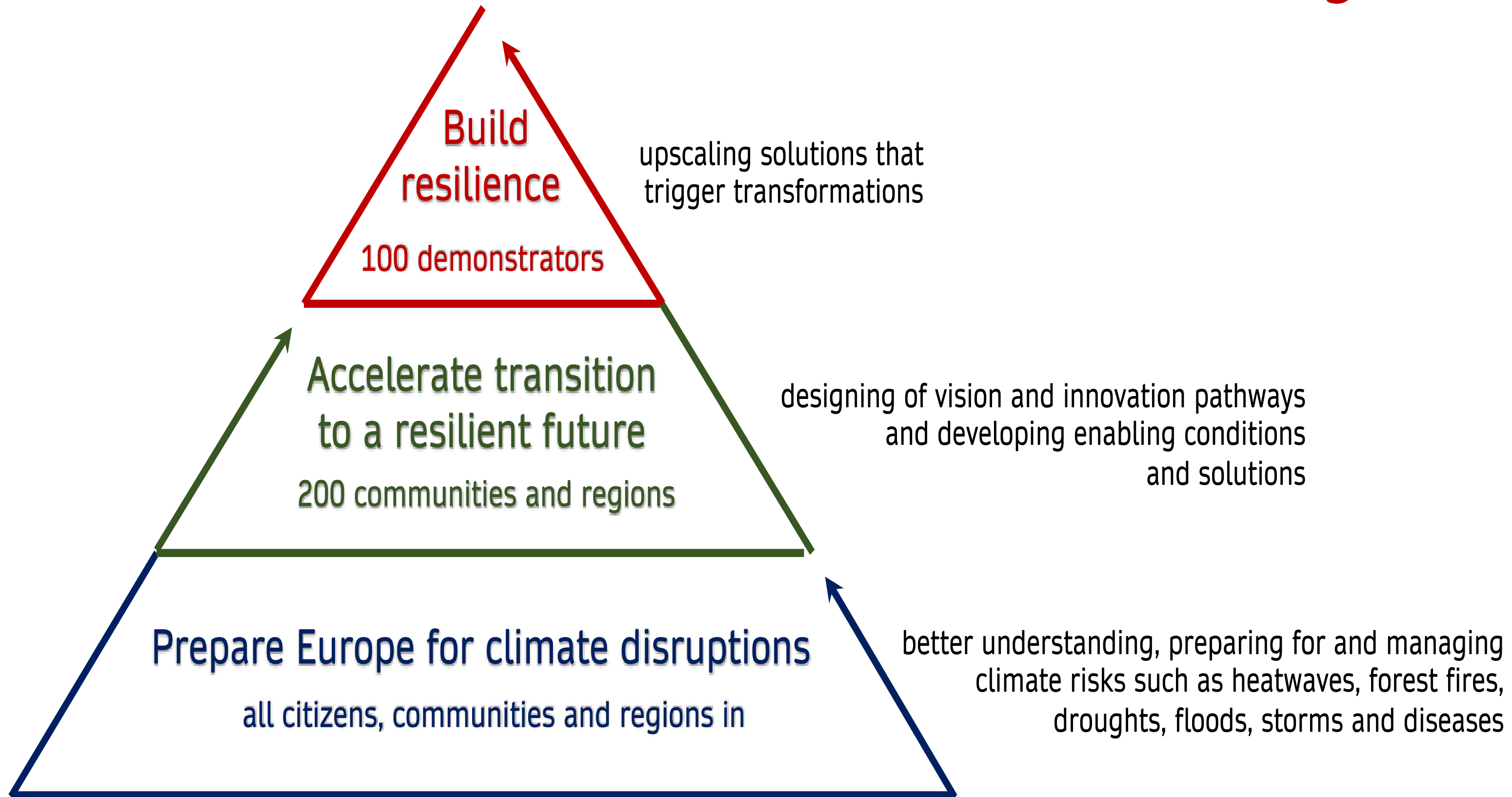
Objectives

ACCELERATING THE TRANSITION TO A CLIMATE PREPARED AND RESILIENT EUROPE

By 2030, the Mission will:

- 1) Prepare Europe** to deal with climate disruptions, and assist all citizens, communities and regions in better understanding, preparing for and managing climate risks such as heatwaves, forest fires, droughts, floods, storms and diseases;
- 2) Accelerate the transition** to the future we want, supporting 200 European communities and regions in co-creating a vision and innovation pathways, as well as developing solutions and enabling conditions for transformative adaptation within safe planetary boundaries;
- 3) Build deep resilience** by scaling up actionable solutions triggering societal transformations through 100 deep demonstrations of resilience across a number of European communities and regions

Objectives



Prepare Europe

Target:

By 2030, all local administrative units (LAU) and regions (NUTS) will have access to climate risk profiles and enhanced early warning systems for all relevant risks, and will have adopted comprehensive climate risk management plans

The Mission will support citizens, communities and regions to:

- **foster a better understanding** of climate risk exposure, providing access to fast track climate risk assessments and strengthening existing early warning systems;
- **facilitate the adoption of climate risk management plans** and community-based emergency plans; and
- **ensure that community infrastructure is safe and essential services operable and accessible** under critical conditions

Accelerate the transition

Target:

By 2030, 200 European communities and regions will have developed their own transformative vision; co-created adaptation pathways; co-designed and tested actionable solutions; and created favourable conditions for societal transformations.

The Mission will support citizens, communities and regions, to:

- **design vision and objectives**, and build consensus around transformative social change enshrined in a community resilience contract;
- **co-create adaptation pathways**, and define possible courses of policy and innovation actions to deliver on the vision, resulting in a portfolio brief for action;
- **co-design and test actionable solutions**, and share learning within and across the communities and regions; and
- **create favourable conditions for societal transformations**

Build deep resilience

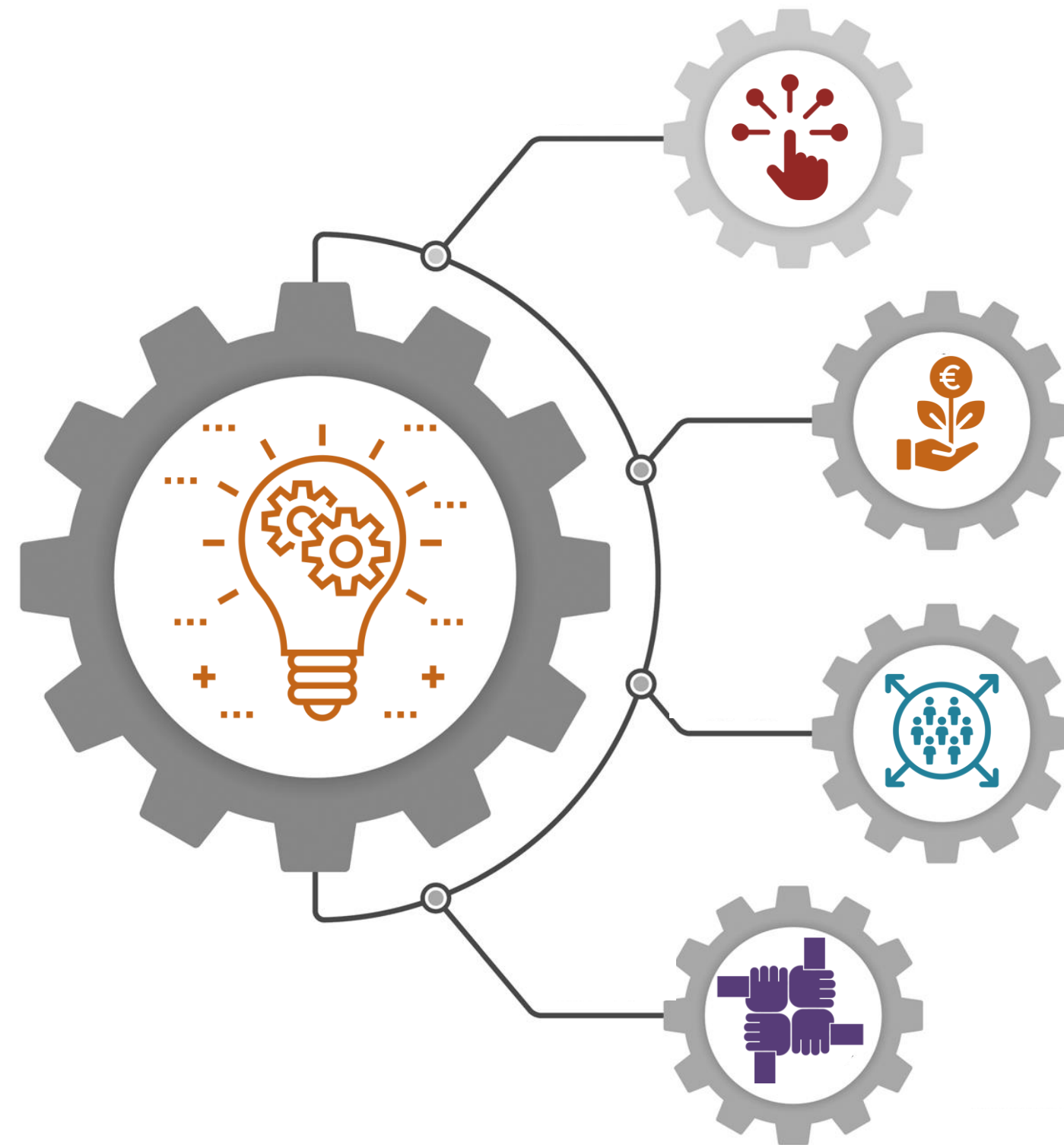
Target:

By 2030, 100 deep demonstrations have scaled-up actionable solutions that have triggered societal transformation, building deeper resilience

Scaling up actionable solutions triggering societal transformations through 100 deep demonstrations of resilience, the Mission will

- **create impact at scale**, building of resilience in single regions and communities focusing on key community systems;
- **create cross-border value**, building of resilience and shared value creation across cross-border systems and services;
- **foster systemic and citizen-centred co-evaluation**, measuring progress made, assessing what has been accomplished and communicating the processes and outcomes

Enabling environment



access to data,
knowledge, digital
services

local economies,
economic resources

inclusive and fair
transition

shared learning and
policy coherence

Facilitating access to data, knowledge, digital services and actionable solutions

- Mobilising research and innovation to improve the knowledge base at regional and local level
- Unlocking the benefits of the digital transformation
- Facilitating the co-production of data and knowledge and the co-design of climate services and actionable solutions

Strengthening local economies, economic security, and resources

- Building of resilient and sustainable local economies
- Closing the climate protection gap
- Mobilising sufficient sustainable funding and financing

ENABLING ENVIRONMENT

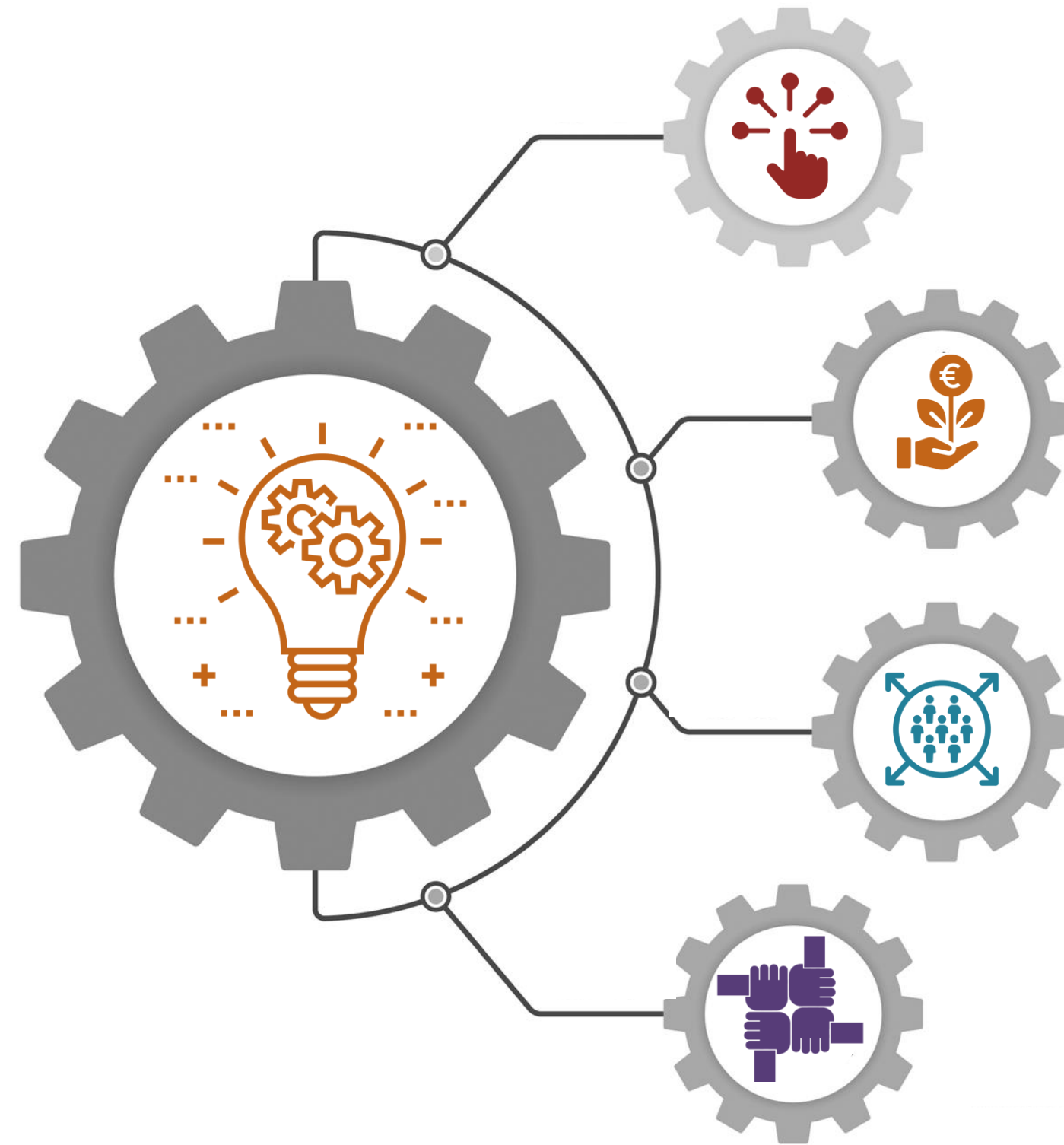
Laying the ground for an inclusive and fair transition

- Engaging citizens and stakeholders in all phases of the transition
- Developing skills, capacities and capabilities in support of the transition
- Providing mechanisms ensuring a just transition

Ensuring coordination for shared learning and more coherent policy making

- Providing a coordination mechanism across regions and communities enrolled in the Mission
- Establishing structures and processes that allow coordination across different levels of governance

Key Community Systems



Community and
Social Infrastructure

Health and Wellbeing

Nature, Biodiversity and
Ecosystem Services

Water

Rural Landscapes
and Food Systems



SOCIAL INFRASTRUCTURE

Regenerating **community and social infrastructure**: renovating public spaces and facilities for inclusive, healthy and climate-resilient neighbourhoods

- renovate public buildings and social housing, making them energy efficient, healthy and compliant with principles of circular economy,
- invest in making community infrastructure safe, resilient and climate-proof,
- ensure access to social infrastructure for all and making residential areas attractive, resilient and sustainable neighbourhoods and communities.

Protecting **human health and wellbeing**: preparing communities to stay healthy in a changing climate (early warning and surveillance systems)

- adopt health plans and adequate response to address relevant hazards in the regions and integrate projected climate risks into health preparedness systems, capacity building and research,
- establish enhanced early warning systems to ensure a rapid response from health services, and protect people at high risk,
- develop robust epidemiological surveillance and modelling tools for assessing and predicting impact of extreme events and disasters associated with climate change.



**SAVING LIVES
AND WELLBEING**



HARNESSING THE POWER OF NATURE

Restoring **nature, biodiversity and ecosystem services**: boosting nature-based solutions and green-blue multipurpose infrastructure investments in ecosystems

- halt land degradation and restore at least 30% of the most degraded ecosystems across land and sea with a high potential for climate adaptation and mitigation and control spread of invasive alien species and pathogens,
- designate multi-layered, high quality and well-connected green and blue infrastructure networks,
- adapt x % of the regions' existing forests to climate change and restoring natural habitats to favourable conservation status.

Rethinking **water management**:
fostering innovations towards smart,
reliable, and efficient access to water
and reduced vulnerability to water-
related risks

- realise transparent water balances and accounts, and adjust water allocations across environmental and human uses to long-term water availability,
- adopt inclusive, forward looking and climate risk-informed water planning and management processes, foster adoption of digital water technologies, and make equitable and ecologically sound water sharing agreement and strategies across borders and during drought-driven shortages and floods,
- identify and reduce water efficiency and protection gaps by at least 50% by 2030, in regions under water stress, now or in the future, and for water bodies at risk of failing to achieve good ecological status.



**EMBRACING NEW
WATER REALITIES**



SUSTAINING THE DIVERSITY AND PRODUCTIVITY OF RURAL LANDSCAPES

Reviving **rural landscapes and sustainable food systems**: shifting to resilient food system, mindful of the interrelations between human and ecosystem health, supply chains, sustainable consumption, and cultural heritage

- endorse strategies for climate neutrality [reducing GHG by 50% by 2030] and resilience;
- strengthen environmental stewardship by increasing the area of high nature value farmland, organic farming, and nature-based solutions to control soil erosion, pollution, pest and diseases,
- promoting shifts to sustainable consumption, and increased consumption of regionally produced, seasonal and healthy agricultural products.

Citizen Engagement

An integral part of Horizon Europe Missions.

Citizen engagement - understood as deliberative democracy and as a new form of governance

Different yet complementary to stakeholder engagement

Three phases:

- co-design
- co-implementation  *Currently at this stage*
- co-assessment

Citizen Engagement: Co-Design

Main goal of the co-design phase:

- To receive input from citizens on some key objectives of the Mission.
- To generate comparable and consistent results across citizen engagement events both at the EU and Member State level.

Questions for citizens include:

- Climate Information and Awareness
- Vision (including the importance of the key systems presented)
- Transformative adaptation solutions

Upcoming Events and deadlines

- **May to Sep** - Refining the proposed Mission, through at least 2 co-design sessions with citizens
- **22-24 Sep**
 - Handover of Mission Boards advice on Missions to the Commission during R&I Days
 - Missions events at R&I Days incl. missions hub - Sessions dedicated to the Mission on Adaptation
- **12-15 October** – European Week of Regions. Session dedicated to the Mission

Thank you for your attention!

Connie Hedegaard (chair)

Mathieu Cornieti

Helena Freitas

Mirela Holy

Daniela Jacob

Virginia Murray

Jaroslav Mysiak

Kevin O'Connor

Hein Pieper

Johan Rockström

Ann Runnel

Mark Scicluna Bartoli

Asuncion Lera St. Clair

Per Espen Stoknes

Jean-Pascal van Ypersele



RTD-HORIZON-EUROPE-MISSION-ADAPTATION@ec.europa.eu

No seguimento da apresentação anterior,
gostaríamos que desse a sua opinião*



*As respostas serão processadas de forma anónima

Join at
slido.com
#30807





Q&A

Por favor, coloque as suas questões no *chat* e identifique-se com primeiro e último nome e organização que representa

Conclusões e Encerramento