

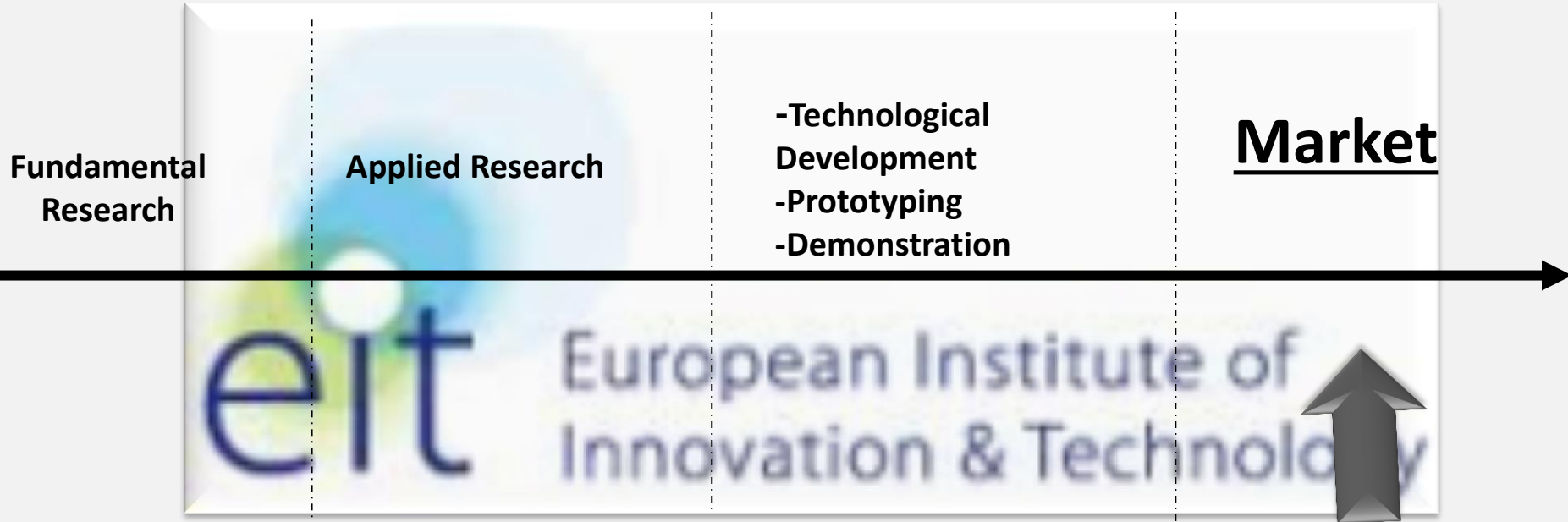
EIT and Horizon 2020 The Knowledge and Innovation Communities (KICs)

Alexandre Marques

NCP Legal and Financial Issues, Innovation in SMEs,
Access to Risk Finance and EIT

alexandre.marques@fct.pt

EIT – Overall Innovation cycle including Research and Education



7th Framework Programme

Horizon 2020

Knowledge

€

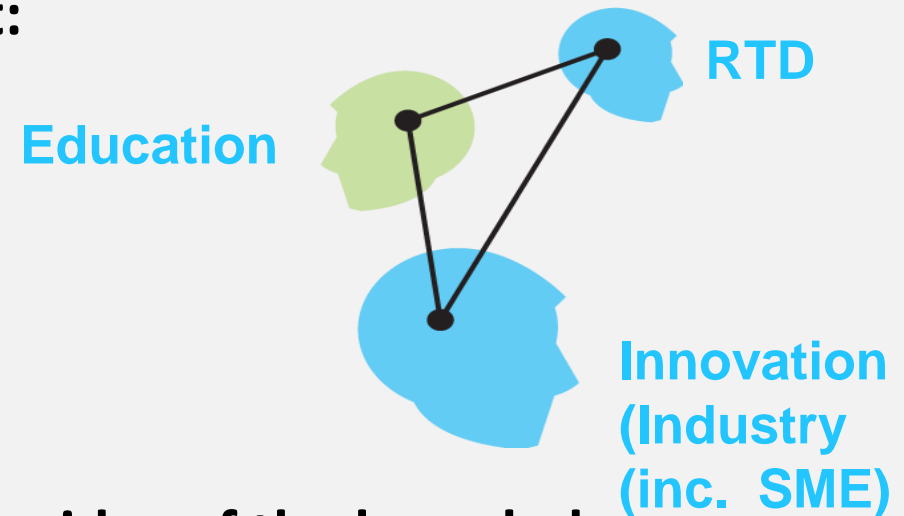
Sustainability

European Institute of Innovation and Technology - Mission

**The mission of the EIT is to facilitate transitions of innovation
in a European and global context:**

- **From idea to product**
- **From lab to market**
- **From student to entrepreneur**

**through the integration of the three sides of the knowledge
triangle (KIC - Knowledge and Innovation communities)**

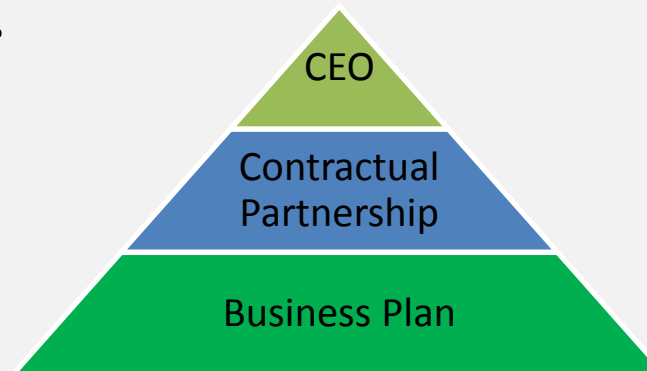


**Entrepreneurship and
Innovation**

A large circular graphic with a blue-to-green gradient, positioned at the bottom right of the slide.

Knowledge and Innovation Communities (KICs)

- ❖ **High degree of integration:** each KIC is an independent legal entity, bringing together partners from the various axes of the knowledge triangle, based on a contractual / partnership relationship with the EIT.
- ❖ **Strategic long-term approach:** each KIC is set to a minimum of 7 years, extendable up to 14 years, to eventually become self-sustainable.
- ❖ **Autonomy and flexibility:** to determine the structure and activities governed by each Center Co-Location
- ❖ **Effective governance:** run by a CEO and management team at central level and Centre Co-Location.



Existing KICs

| <u>NAME</u> | ❖ <u>AREA</u> | ❖ <u>LEGAL ENTITY</u> | ❖ <u>MANAGEMENT STRUCTURE</u> |
|-----------------------|--|--|--|
| ❖ <u>Climate KIC</u> | ❖ Climate Change, Mitigation and Adaptation | ❖ <u>Dutch Association</u> | ❖ <u>Assembly (Core partners plus two elected affiliated partners)</u> |
| ❖ <u>InnoEnergy</u> | ❖ Sustainable Energy | ❖ <u>Entreprise (Societas Europea)</u> | ❖ <u>Supervisory Board</u> ❖ <u>Executive board</u> |
| ❖ <u>EIT ICT Labs</u> | ❖ Future Information and Innovation Technologies | ❖ <u>Belgian Association</u> | ❖ <u>General Assembly</u> ❖ <u>Elected Executive Assembly</u> |

KICs Co-Location Centres

- **Climate-KIC:**

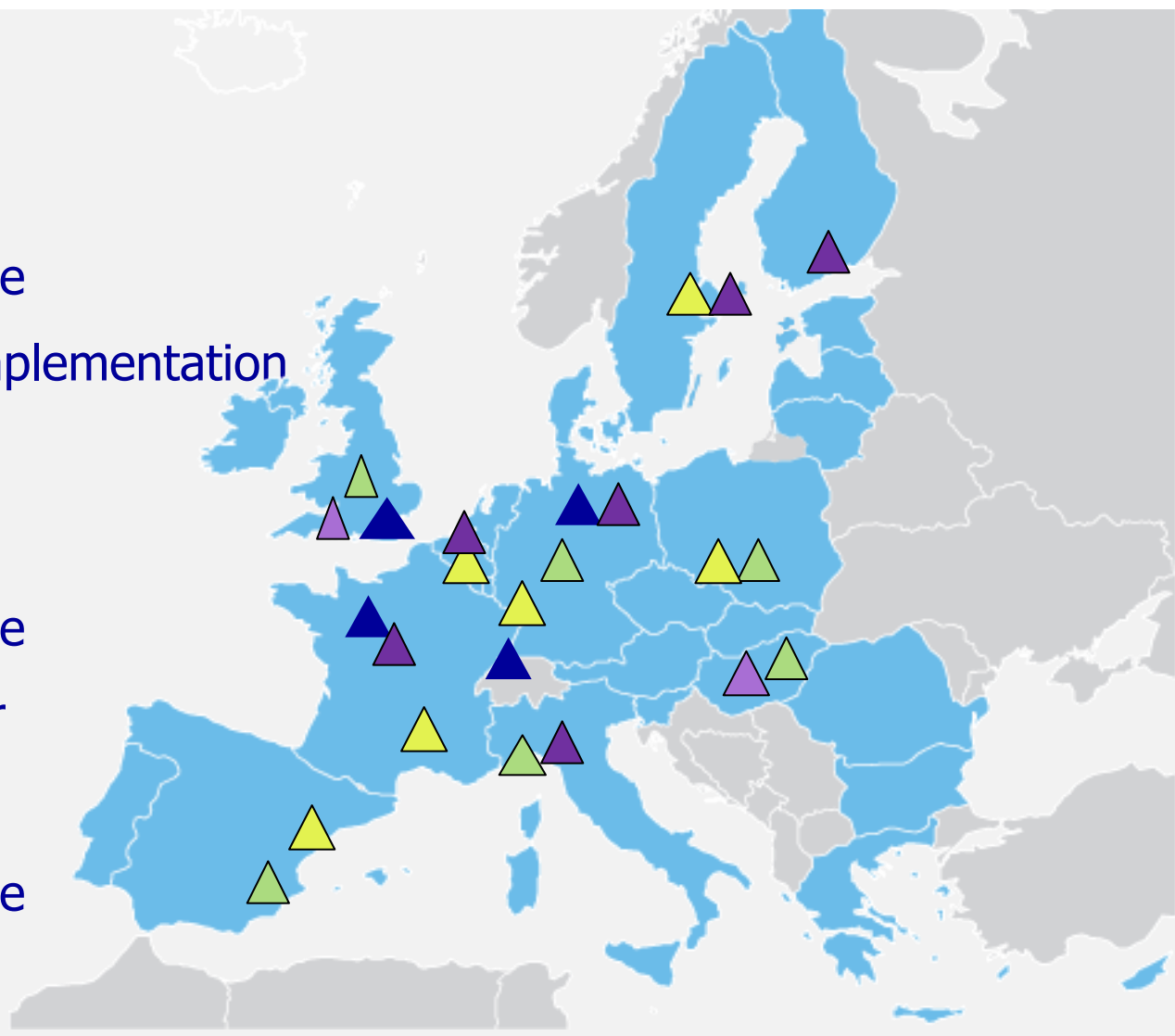
- ▲ – Co-location centre
- ▲ – RIC (Regional Implementation Innovation Centre)

- **EIT ICT Labs:**

- ▲ – Co-location centre
- ▲ – Associate Partner

- **KIC InnoEnergy**

- ▲ – Co-location centre



KIC – Financial Model

The EIT only funds the “added-value” activities, it is incentivized ability to attract other sources of funding:

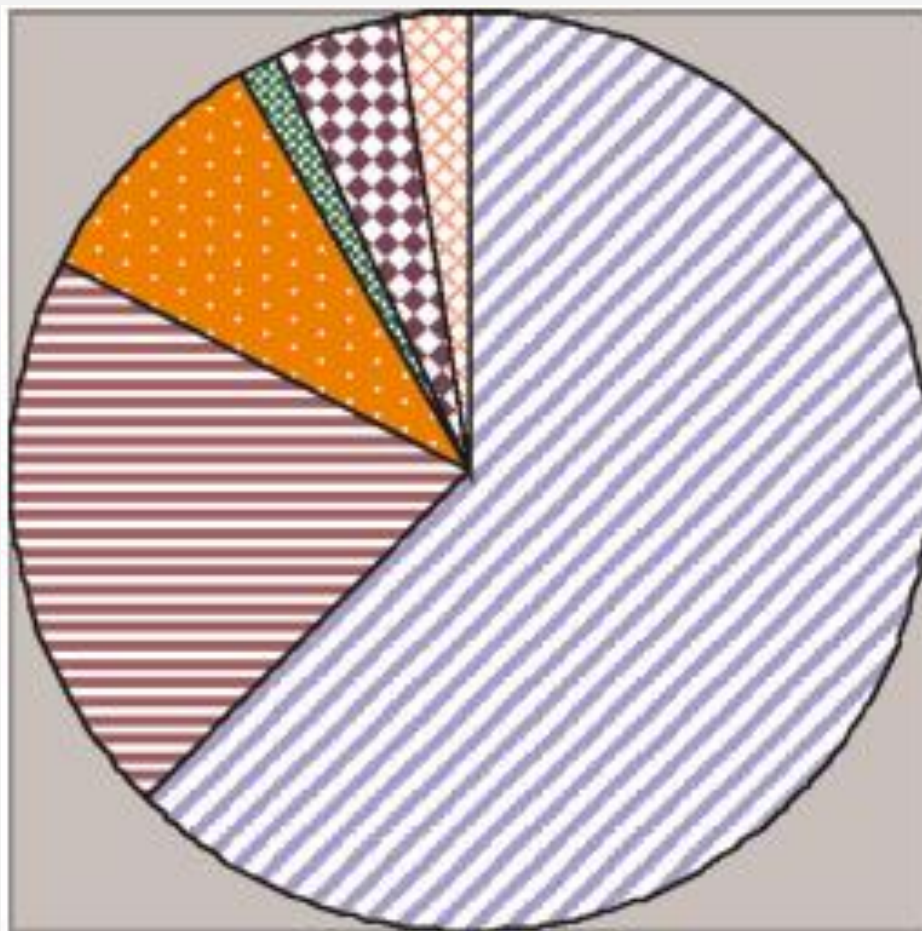
| KIC added value activities 25% | Complementary activities 75% |
|--|---|
| <ul style="list-style-type: none">▪ Launch of new products and services▪ Launch start-ups▪ Entrepreneurship Masters and PhDs | <ul style="list-style-type: none">• RTD activities (other projects and sources of fundings)• Intellectual Property: valorization of RTD projects• Internal activities |

Strategic Innovation Agenda

- 1. Consolidation of existing KICs**
- 2. Creation of new KICs**
- 3. The EIT as an institute (outreach and dissemination; simplification)**

EIT budget

EIT will have budget of 2.711,40M€ in Horizon 2020



- 2009 KICs
- 2014 KICs
- 2016 KICs
- 2018 KICs
- Dissemination and Outreach
- Admin.

EIT and Horizon 2020

- **New KICs on H2020**
 - **Innovation for healthy living and active ageing (2014)**
 - **Raw materials – sustainable exploration, extraction, processing, recycling and substitution (2014)**
 - **Food4future - sustainable supply chain from resources to consumers (2016)**
 - **Added-value manufacturing (2016)**
 - **Urban mobility (2018)**

Call EIT

❖ **December 12, 2013**

Publication of the selection criteria

❖ **January 2014**

Publication of the Guide for Applicants, Financial Regulation of the EIT and Principles for the EIT funding, monitoring and evaluation of the activities of KIC

❖ **February 14, 2014**

Call for Release of 2 new KICs

❖ **March 14, 2014**

Information Day in Budapest

❖ **September 10, 2014**

Closure of the 2014 call for KICs

❖ **December 2014**

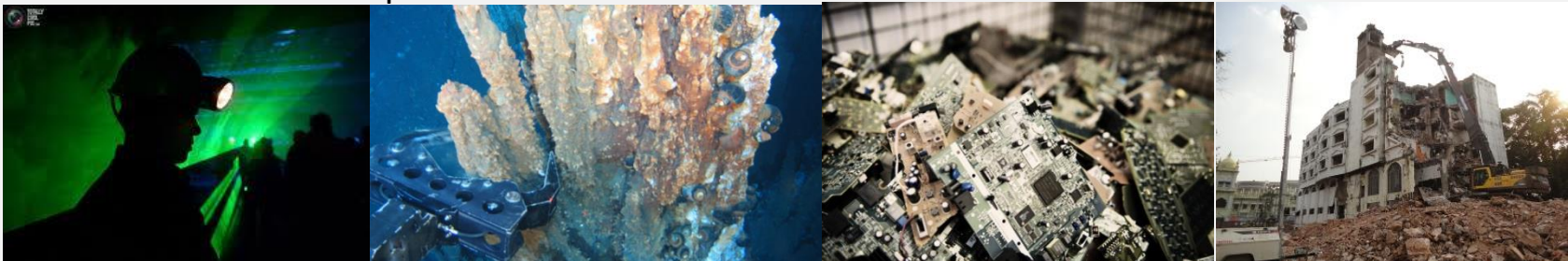
Appointment of new KICs

WHY a Raw Materials KIC?

EIT Strategic Innovation Agenda (SIA)

The KIC will address a major economic and societal relevant challenge Europe is facing
→ the need to **develop innovative solutions** for the **cost-effective, low carbon and environmentally friendly exploration, extraction, processing, use, re-use, recycling and end of life management of raw materials**

- highly relevant in terms of **economic and societal impact**
- bring major **economic opportunities**, improve **productivity**, drive down costs and boost competitiveness
- concentrate on fostering a knowledge hub and centre of expertise on academic, technical and practical education and research in **sustainable surface, subsurface, deep-sea, urban and landfill mining, material management, recycling technologies, end of life management, material substitution and open trade**, as well as global governance in raw materials.
- addressing the sector's limited networking opportunities
- transdisciplinary activities within the knowledge triangle with a strong focus on innovative products and services and entrepreneurial education



The EIPs and the EIT KIC

EIT Strategic Innovation Agenda foresees close cooperation with European Initiatives:

On point 3. Synergies and Complementarities With Existing Initiatives:

- ❖ EIP Raw Materials
- ❖ European Rare Earth Competency Network
- ❖ Etc

Call EIT: Criteria

Strategy

- Strategic approach (10 points)
- Added-Value Innovativeness and Synergies (10 points)
- KIC partnership (10 points)

Operations

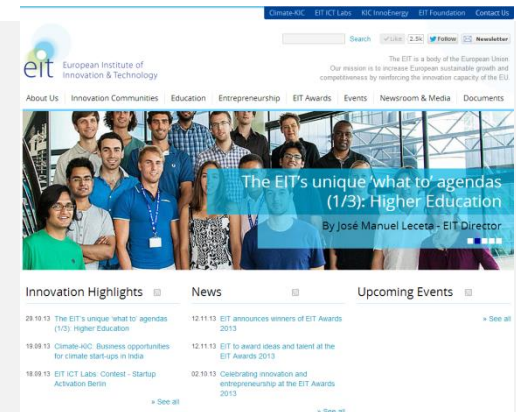
- KIC Governance (10 points)
- Leadership and Operations (10 points)
- KIC business Model and Financial Plan (15 points)

Impact

- Impact and competitiveness (15 points)
- Outputs (KPI) and KIC Scoreboard (10 points)
- Communication, outreach and Dissemination (10 points)

Links and Contacts

- ❖ <http://eit.europa.eu/>
- ❖ <http://www.gppq.fct.pt/h2020/h2020.php?tema=tCzl-3STmikzO2UhLwh1LsM1KltRZTas2yabSPwLWu4>



Alexandre Marques

Tel. : +351 21 391 76 45

E-mail: alexandre.marques@fct.pt

Anabela Carvalho

Tel. : +351 21 391 76 41

E-mail: anabela.carvalho@fct.pt