

Call for project proposals

2023

Virginia Puzzolo
Head Of Programme
Lisbon, 11/05/2023



Table of contents

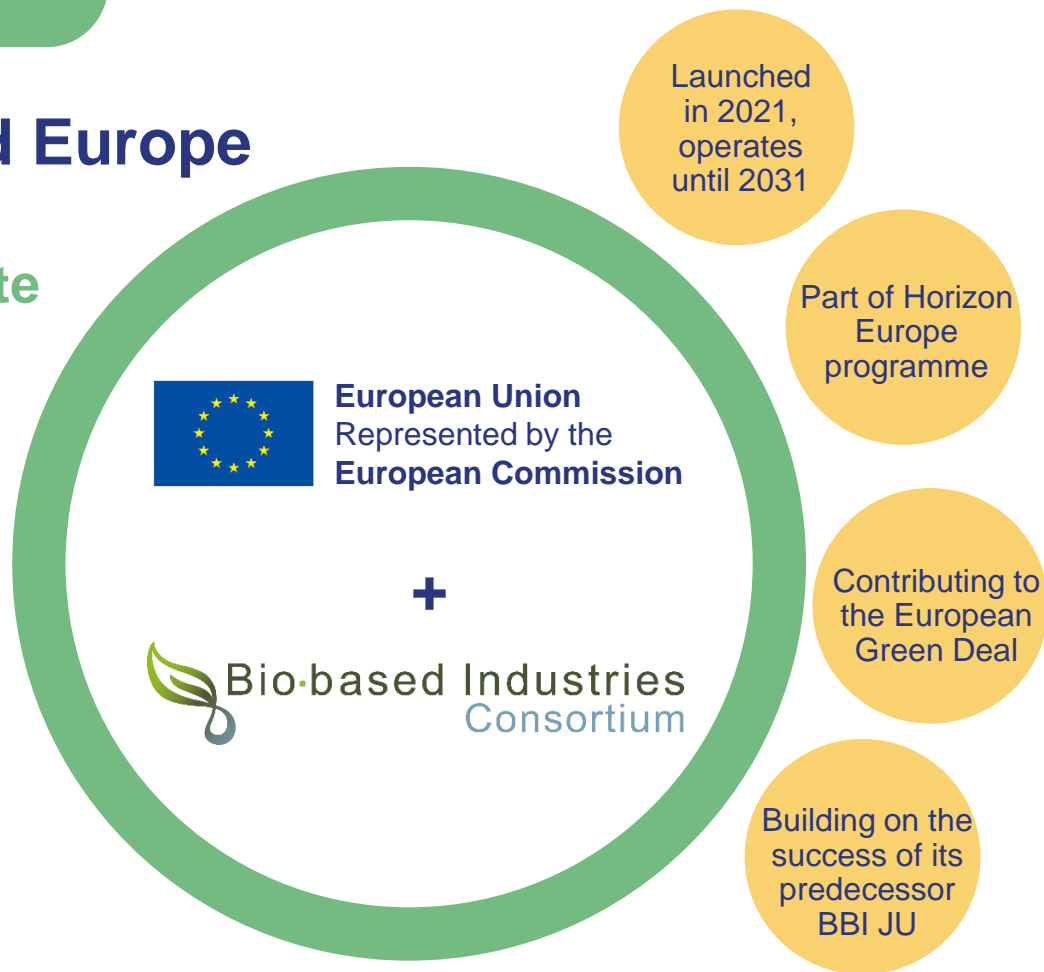
- **CBE JU: intro**
- **Annual Work Plan (AWP) 2023**
 - Topic overview
 - Terminology & structure
- **CBE JU specifics**
 - ‘Specific requirements’
 - ‘Cross-cutting elements’
- **Proposal preparation**
 - Timing
 - Final tips & tricks on how to write a good proposal
- **Q&A**

Circular Bio-based Europe Joint Undertaking (CBE JU) and its Objectives

1

Circular Bio-based Europe Joint Undertaking

€2 billion public-private
initiative



General and Specific CBE JU Objectives



Accelerate the **innovation** process and development of bio-based innovative solutions



Increase cross-disciplinary **research and innovation** activities, reaping its benefits for the development and demonstration of **sustainable bio-based solutions**.



Increase and integrate the research and innovation **capacity of stakeholders** across the EU to unlock **bioeconomy potential** even in regions with underdeveloped capacity.



Increase the **research and innovation** capacity and development of sustainable bio-based innovations, by ensuring that sustainability issues and environmental performance are integrated throughout the whole **innovation chain**.



Accelerate **market deployment** of the existing mature and innovative bio-based solutions



Reinforce the integration of **bio-based research** and innovation in EU bio-based industries and increase the involvement of R&I actors, including feedstock providers, in the **bio-based value chains**.



Reduce the risk for research and innovation investment in bio-based companies and projects.

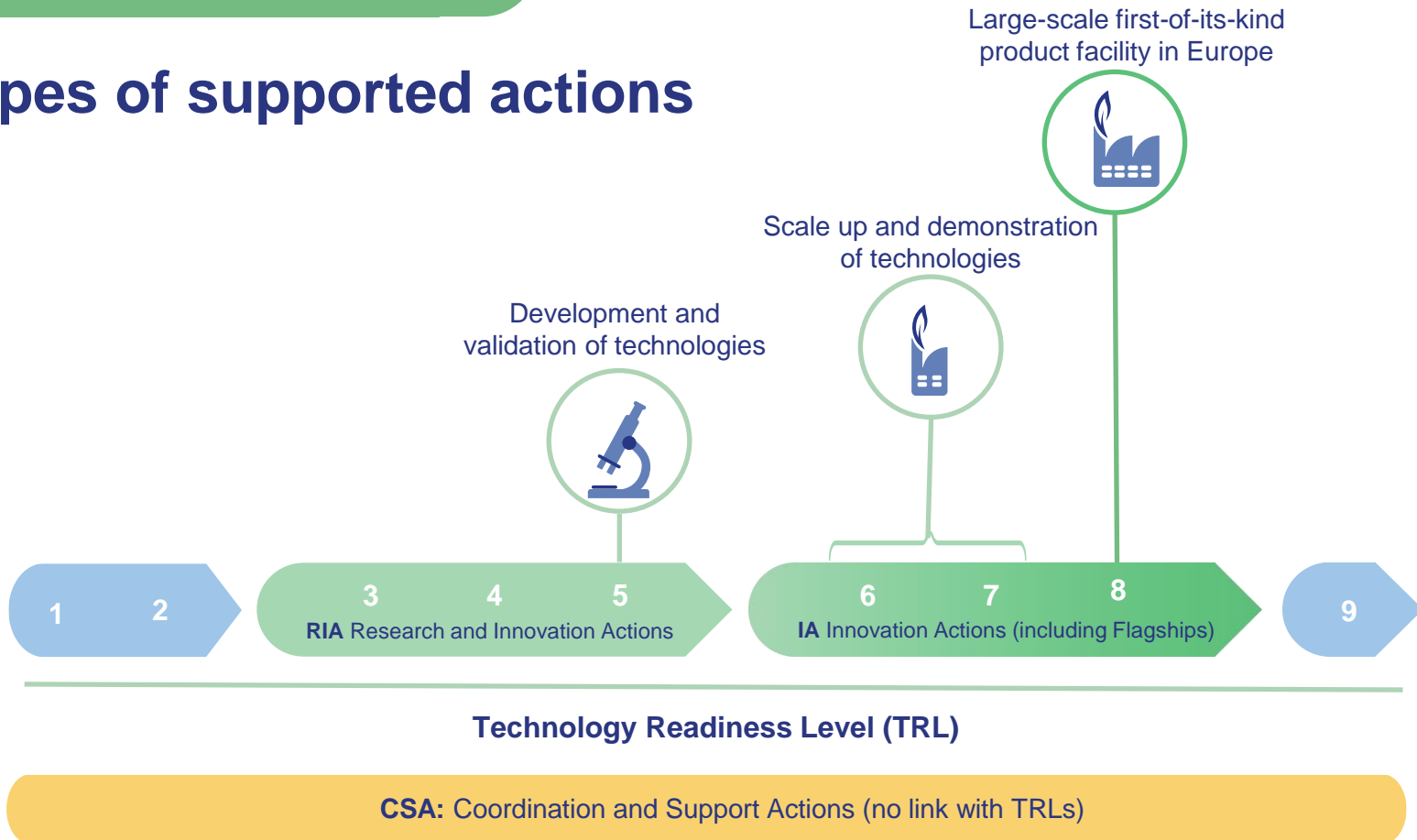


Ensure a high level of **environmental performance** of bio-based industrial systems



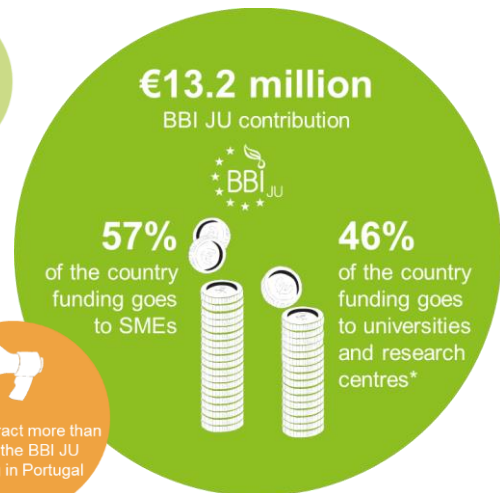
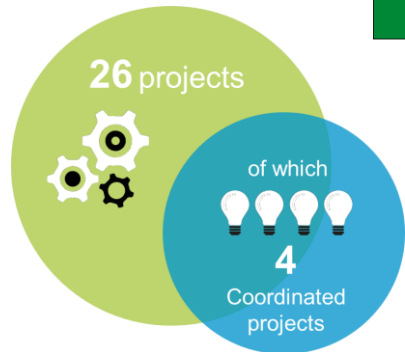
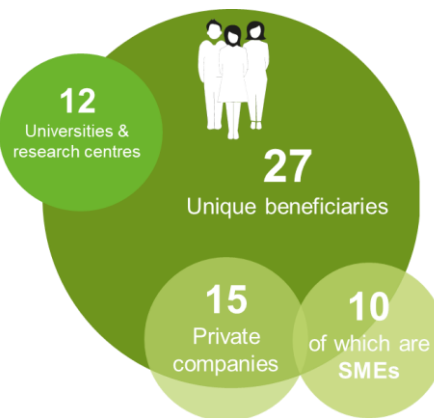
Ensure that **circularity** and environmental considerations, including contributions to **climate neutrality** and **zero pollution** objectives, are considered in the development and implementation of R&I bio-based projects and facilitate **societal acceptance**.

Types of supported actions





BBI JU Participation in graphics



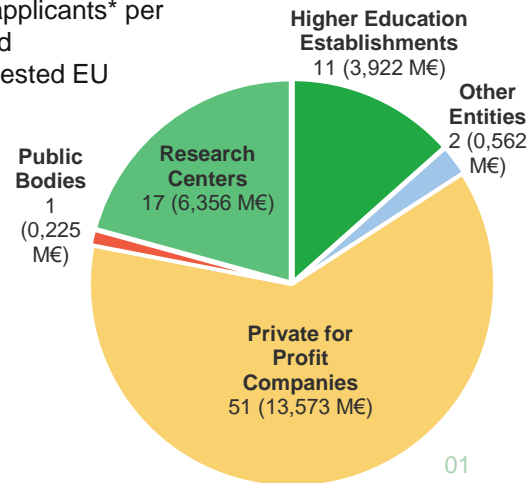
SMEs attract more than half of the BBI JU funding in Portugal

*Some research centres are SMEs.

CBE JU Call 2022 Application in graphics

Number of Portuguese applicants* per Type of Organisation and corresponding total requested EU contribution

* Total of 82 applicants corresponds to 55 unique entities



CBE JU Annual Work
Programme (AWP) 2023:
Topics

2

18 topics and their budget

| Type of action | Topics HORIZON-JU-CBE-2023 | | Million EUR |
|-----------------|----------------------------|--|-------------|
| IA- flagship | IAFlag-01 | Optimised and integrated wood-based value chains | 17 |
| | IAFlag-02 | Expansion and/or retro-fitting of biorefineries towards higher-value bio-based chemicals and intermediates | 17 |
| | IAFlag-03 | Bio-based packaging materials with improved properties: barrier, food contact, forming, printability, safety, recyclability /circularity-by-design | 17 |
| | IAFlag-04 | Valorisation of aquatic biomass waste and residues | 10 |
| IA | IA-01 | Small scale biorefining in rural areas | 15 |
| | IA-02 | Production of safe, sustainable, and efficient bio-based fertilisers to improve soil health and quality | 15 |
| | IA-03 | Improve fermentation processes (including downstream purification) to final bio-based products | 15 |
| | IA-04 | Recycling bio-based plastics increasing sorting and recycled content (upcycling). | 15 |
| | IA-05 | Development of scalable, safe bio-based surfactants, with an improved sustainability profile | 15 |
| | IA-06 | Selective, sustainable production routes towards bio-based alternatives to fossil-based chemical building blocks | 15 |
| | IA-07 | High performance, circular-by design, bio-based composites | 15 |
| RIA | R-01 | Phyto-management; curing soil with industrial crops, utilising contaminated and saline land for industrial crop production | 10 |
| | R-02 | Optimised forest-based value chains for high value applications and improved forest management | 10 |
| | R-03 | Robust and optimised industrial biotech and chemical/industrial biotech processes | 10 |
| | R-04 | Development of novel, high-performance bio-based polymers and co-polymers | 10 |
| | R-05 | Pre-normative research to develop standards for biodegradability of bio-based products in controlled and in open environments | 5 |
| CSA | S-01 | EU-wide network of pilot plants and testing facilities, improving SMEs and start-ups' access to scale-up | 1.5 |
| | S-02 | Supporting the capacity of regions in environmental sustainability assessment for the bio-based sectors | 3 |

Total 215.5

Call topic structure

HORIZON-JU-CBE-2023-XX-NN Topic title

| | |
|---|--|
| Type of action | Research and Innovation Action |
| Indicative budget | The total indicative budget for the topic is EUR 10 million |
| Expected EU contribution per project | It is estimated that a contribution of EUR 5 million would allow these outcomes to be addressed appropriately. Nonetheless, this does not preclude submission and selection of a proposal requesting different amounts |
| TRL | TRL 4-5 at the end of the project |
| Link to CBE JU Specific Objectives | 1.1: Increase the intensity of cross-disciplinary research and innovation activities |
| Link to CBE JU SRIA Strategic Priorities | 1.1.2: Develop innovative production systems in the bio-based industry 1.1.3: Develop innovative bio-based products |
| CBE JU KPIs | 4.5 Number of products with improved life cycle environmental performance 5.1 Number of innovative products that are biodegradable, compostable, recyclable, reused or upcycled (circular-by-design) 5.2 Number of projects developing circular production practices (incl. industrial & industrial urban symbiosis) 6 Increase innovative bio-based outputs and products |

Topic

Topic

Topic

AWP
2023

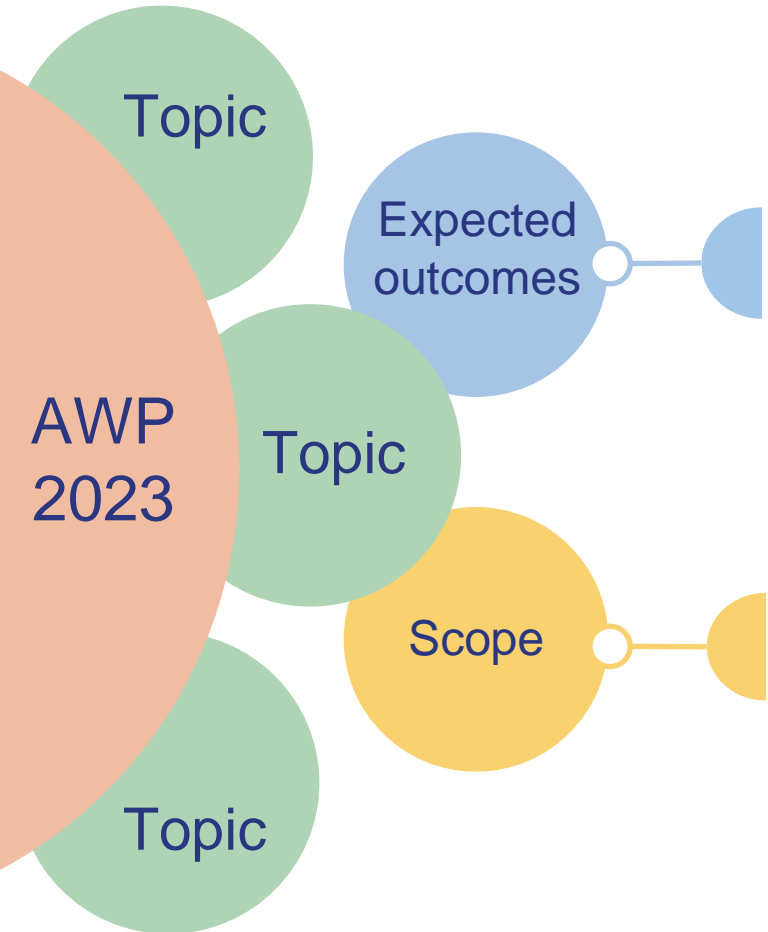
Links to SRIA priorities

| Strategic Research and Innovation (SRIA) priorities | | CBE JU TOPICS AWP2023 | | | | | | | | | | | | | | | | | | |
|---|--|---|-----------|-----------|-----------|-------|-------|-------|-------|-------|-------|-------|------|------|------|------|------|------|------|---|
| | | IAFlag-01 | IAFlag-02 | IAFlag-03 | IAFlag-04 | IA-01 | IA-02 | IA-03 | IA-04 | IA-05 | IA-06 | IA-07 | R-01 | R-02 | R-03 | R-04 | R-05 | S-01 | S-02 | |
| FEEDSTOCK | Strategic priority 1.1.1 - Ensure the availability and quality of sustainable bio-based feedstock | | | | | X | | | | | | | | X | X | | | | | X |
| | Strategic priority 1.3.1 - Protect and enhance biodiversity and ecosystem services in bio-based feedstock supply systems | | | | | | | | | | | | | X | X | | | | | X |
| | Strategic priority 2.1.1 - Demonstrate the sustainable supply of bio-based feedstock | | | | X | X | X | | X | X | X | | | X | | | | | | |
| PROCESSING | Strategic priority 1.1.2 - Develop innovative production systems in the bio-based industry | | | | | X | | | | | | | | | X | X | | | | |
| | Strategic priority 1.3.2 - Improve environmental performances of bio-based processes | | | | | | | | | | | | | X | | | | | | |
| | Strategic priority 2.1.2 - Deploy innovative production technologies | X | X | X | X | X | X | X | X | X | X | X | | | | | | | | |
| PRODUCTS | Strategic priority 1.1.3 - Develop innovative bio-based products | | | | | | | | | | | | | | X | X | | | | |
| | Strategic priority 2.1.3 – Scale-up production and market uptake of innovative bio-based products | X | X | X | X | | X | | | X | X | X | | | | | | X | | |
| CROSS-CUTTING | Communication | Strategic priority 1.2.1 - Stimulate research activities in countries and regions with underdeveloped R&I capacity for bio-based systems | | | | | | | | | | | | | | | | X | X | |
| | | Strategic priority 1.2.2 – Increase the awareness and capacity of national and regional research support agencies for industrial bio-based systems | | | | | | | | | | | | | | | | | X | |
| | | Strategic priority 1.2.3 - Facilitate the development of expertise in bio-based fields by improving higher education and skills development in the private sector | | | | | | | | | | | | | | | | | | |
| | | Strategic priority 2.1.4 - Build policy makers' awareness and acceptance of bio-based solutions | | | | | | | | | | | | | | | | | | |
| | | Strategic priority 3.1.3 – Facilitate social acceptance of bio-based applications | X | X | X | X | | | | | | | | | | | X | | | |
| | Finance | Strategic priority 2.2.1 – Improve the risk profile of bio-based projects | | | | | | | | | | | | | | | | | | |
| | | Strategic priority 2.2.2 - Develop investment tools and approaches that mitigate the investment risk in bio-based systems | | | | | | | | | | | | | | | | | X | |
| | Environmental sustainability framework | Strategic priority 3.1.1 - Set effective and robust environmental sustainability and circularity criteria for bio-based systems | | | | | | | | | | | | | | | | | | |
| | | Strategic priority 3.1.2 - Incorporate the environmental sustainability and circularity criteria in bio-based systems | X | X | X | X | | | X | X | X | X | X | | | | | | | X |

Links to CBE JU KPIs

| CBE KPIs: Objectives and Units of measurement | | CBE JU TOPICS AWP 2023 | | | | | | | | | | | | | | | | |
|---|---|------------------------|------------|------------|------------|-------|-------|-------|-------|-------|-------|-------|-----|-----|-----|-----|-----|------|
| | | IA1Flag-01 | IA1Flag-02 | IA1Flag-03 | IA1Flag-04 | IA-01 | IA-02 | IA-03 | IA-04 | IA-05 | IA-06 | IA-07 | R01 | R02 | R03 | R04 | R05 | S-01 |
| 1 | Strategic participation and integration of feedstock producers and suppliers towards large-scale valorisation of sustainable biomass | | | | | | | | | | | | | | | | | |
| 1.1 | N of primary producers, involved as project beneficiaries and/or engaged in value chains at project level | | | x | x | | | | | | | | | x | x | | | |
| 1.2 | N of bio- waste management actors, involved as project beneficiaries and/or engaged in value chains at project level | | | | x | x | | | | x | | | | | | | | |
| 2 | Unlock sustainable and circular bio-based feedstock for the industry | | | | | | | | | | | | | | | | | |
| 2 | N of innovative bio-based value chains created or enabled based on sustainably-sourced biomass | | | | x | x | x | x | | x | x | | | x | x | | | |
| 3 | Ensure environmental sustainability of feedstock | | | | | | | | | | | | | | | | | |
| 3.1 | N of projects using feedstock generated with practices that contribute to enhance biodiversity | | | | | | x | | | x | x | x | | x | | | | |
| 3.2 | N of projects using feedstock generated with practices aiming at zero-pollution (soil, water, air) and/or at reducing water consumption | | | | | | x | | | x | x | x | | x | x | | | |
| 3.3 | N of projects using feedstock generated with practices contributing to climate change mitigation and/or adaptation | x | | | | | x | | | x | x | x | | x | | | | |
| 4 | Improve environmental sustainability of bio-based production processes and value chains | | | | | | | | | | | | | | | | | |
| 4.1 | N of projects with innovative & sustainable processes that contribute to GHG emission reduction | | | | | x | | x | | | x | | | | | x | | |
| 4.2 | N of projects developing innovative & sustainable processes that improve on resource efficiency and zero-waste | x | x | | | x | x | | x | x | | | | | | x | | |
| 4.3 | N of projects developing innovative & sustainable processes enabling to address zero pollution | | | | | x | x | x | x | | x | x | | | | x | | |
| 4.4 | N of projects with innovative & sustainable processes with improved energy efficiency | x | x | | | | x | | x | | | x | | | | x | | |
| 4.5 | N of products with improved life cycle environmental performance | | | x | | | x | | x | x | x | x | | | | x | x | |
| 5 | Expand circularity in bio-based value chains | | | | | | | | | | | | | | | | | |
| 5.1 | N of innovative products that are biodegradable, compostable, recyclable, reused or upcycled (circular by design) | | | x | | | | | | x | | | x | | | | x | x |
| 5.2 | N projects developing circular production practises (incl. industrial & industrial urban symbiosis) | x | x | x | x | | | | | x | | | | | x | x | x | x |
| 6 | Increase innovative bio-based outputs and products | | | | | | | | | | | | | | | | | |
| 6.1 | N of innovative bio-based dedicated outputs, with novel or significantly improved properties vs relevant alternatives | | | | | | | | x | | x | | x | | | x | x | |
| 6.2 | N of innovative bio-based drop in outputs meeting applications requirements | | | | | | | | x | | x | | x | | | x | x | |
| 7 | Improve the market uptake of bio-based products | | | | | | | | | | | | | | | | | |
| 7 | N of brand owners involved as project partners and/or engaged with other mechanisms | | | x | | | | | | | x | | x | | | | | x |
| 8 | Attract investment on the bio-based sector | | | | | | | | | | | | | | | | | |
| 8 | N of actions implemented at project level to attract investment and/or to create awareness in the investment/funding community | | | | | | | | | | | | | | | | | |
| 9 | Increase resilience and capacity in the bio-based sector | | | | | | | | | | | | | | | | | |
| 9 | N of projects contributing to develop the skills and capacity needed by the EU bio-based sector | | | | | | | | | | | | | | | | | x |
| 10 | Improve participation of regions and countries with high unexploited potential and strategic interest to develop it | | | | | | | | | | | | | | | | | |
| 10.1 | N of participants from the underrepresented EU countries and region | | x | | | x | x | | | | | | | | | | | x |
| 10.2 | N of regional hubs established and operated to process bio-based feedstocks and other cooperation aspects | | x | | | | x | | | | | | | | | | | |
| 10.3 | N of projects with synergies with other funding programmes at EU, national or regional level | | | | | | | | | | | | | | | x | | x |

Call topic structure



The 'change' to be achieved

- Provides a broad description of what is the **impact** to be achieved by the project
- The **dissemination and exploitation** of future research results are vital for the impact`

The 'problem'

- Identifies the aspects of the **challenge** that needs to be tackled
- Specifies a **perimeter** to the problem described
- Does not specify the expected solutions to the problem, nor the approach to be taken

CBE JU Call 2023:
Specific requirements

3

Similarities and **differences** with Horizon Europe



Funding rate

- RIA: 100%
- IA: **60%** (100% non-profit)
- CSA: 100%



Award criteria

- RIA, IA & CSA: Excellence, Impact, Implementation
- IA: + Impact **Ability to ensure 15% (IA) or 20% (IAFlag) of in-kind contribution to operational activities (IKOP)**
= minimum IKOP percentage



Page limit

- RIA: **50 p.**
- IA: **70 p.**
- CSA: 30 p.



Scoring thresholds

- Excellence: 3/5
- Impact: **4/5**
- Implementation: 3/5
- Total: **11/15**



Score weighting factor

- IA: Impact x **1,5**

In-kind contribution to operational activities (IKOP)

IKOP = Total eligible costs – Requested EU contribution (of private members)

In CBE JU, the only private member is the **Bio-based Industries Consortium (BIC)**.

→ **Minimum percentage of IKOP** must be reflected in the budget of partners that are BIC members.

| Example 1: IA Flagship Criterion: $\geq 20\%$ IKOP | BIC member | Industry / Academia | Total eligible costs | Funding rate | Requested EU contribution | IKOP |
|---|---------------|------------------------|-------------------------|-----------------|------------------------------|--------------------|
| Coordinator (BIC member) | Y | industry | € 7,000,000 | 60% | € 4,200,000 | € 2,800,000 |
| Beneficiary 1 | N | academia | € 590,000 | 100% | € 590,000 | |
| Beneficiary 2 (BIC member) | Y | industry | € 5,000,000 | 60% | € 3,000,000 | € 2,000,000 |
| Beneficiary 3 | N | industry | € 3,000,000 | 60% | € 1,800,000 | |
| Beneficiary 4 | N | academia | € 800,000 | 100% | € 800,000 | |
| TOTAL | | | € 16,390,000 | | € 10,390,000 | € 4,800,000 |

$$\text{Percentage IKOP} = \frac{\text{€ 4,800,000}}{\text{€ 16,390,000}} = 29,3\% > 20\% \quad \text{👍}$$

BIC has set up an open and fast procedure to become a BIC member: <https://biconsortium.eu/membership>

In-kind contribution to operational activities (IKOP)

IKOP = Total eligible costs – Requested EU contribution (of private members)

In CBE JU, the only private member is the **Bio-based Industries Consortium (BIC)**.

→ **Minimum percentage of IKOP** must be reflected in the budget of partners that are BIC members.

| Example 2: IA Criterion: $\geq 15\%$ IKOP | BIC member | Industry / Academia | Total eligible costs | Funding rate | Requested EU contribution | IKOP |
|--|---------------|------------------------|-------------------------|-----------------|------------------------------|--------------------|
| Coordinator (BIC member) | Y | industry | € 3,200,000 | 60% | € 1,920,000 | € 1,280,000 |
| Beneficiary 1 | N | academia | € 590,000 | 100% | € 590,000 | |
| Beneficiary 2 | N | industry | € 1,500,000 | 60% | € 900,000 | |
| Beneficiary 3 | N | industry | € 3,000,000 | 60% | € 1,800,000 | |
| Beneficiary 4 | N | academia | € 800,000 | 100% | € 800,000 | |
| TOTAL | | | € 9,090,000 | | € 6,010,000 | € 1,280,000 |

$$\text{Percentage IKOP} = \frac{\mathbf{€1,280,000}}{\mathbf{€9,090,000}} = 14,1\% < 15\% \quad \text{👎}$$

BIC has set up an open and fast procedure to become a BIC member: <https://biconsortium.eu/membership>

Horizon Europe + CBE requirements

Horizon Europe (HE) rules

- Eligibility
- Admissibility
- General annexes

HE evaluation criteria

- Excellence
- Impact
- Implementation

CBE Annual Work Programme 2023

- Topics
- **Specific requirements**
- **Cross-cutting elements**
- Budget

HE Programme Guide

HE Online Manual

HE General Annexes

HE Annotated Model Grant Agreement



EU Grants
AGA - Annotated Model Grant Agreement
2021 Funding Programme 2021-2027



Part A

Part B

Proposal structure

Application forms
Application forms (Part A)
Topic:
Type of action:
Type of Model Grant Agreement:
Proposal acronym:
Table of contents:
1. Excellence
1.1 Operational and academic excellence
1.2 Methodology
2. Impact
2.1 Project results (outputs, impacts)



CBE JU specific requirements



| Specific requirement of the CBE JU Call 2023 | Type of action | Where to include it in Part B |
|---|---|--|
| Feedstock sourcing | RIA and IA, incl. FLAG | Part B – Structured question (Y/N) in the introduction |
| Feedstock sustainability requirements (a,b,c,d) | RIA and IA, incl. FLAG | Part B – Structured question (Y/N) in the introduction |
| Description of feedstock | RIA and IA, incl. FLAG | Part B – 1.2 Methodology |
| Environmental performance - Ex-ante assesment <ul style="list-style-type: none"> • Identification of environmental issues • Estimation of environmental sustainability • Estimation of carbon removal | RIA and IA, incl. FLAG | Part B – 1.2 Methodology |
| Ex-post assessment of environmental sustainability and circularity <ul style="list-style-type: none"> • Dedicated task • Dedicated task or WP (LCA) • Dedicated task or WP (LCSA) | RIA IA FLAG | Part B – 3.1 Workplan and resources |
| Economic viability | RIA | Part B – 2.2 Measures to maximise impact |
| Business case | IA, incl. FLAG | |
| Business plan | FLAG | |
| Recommendations to stakeholders | IA, incl. FLAG | Part B – 3.1 Workplan and resources |
| Multi-actor approach | IA, incl. FLAG RIA and CSA, when specified | Part B – 1.2 Methodology |

Economic viability Business Case/Model/Plan

IA – Flagship

RIA



Economic viability Check

A **check of the economic viability** of the products and processes to be developed (including an analysis of the value chain and potential market for the envisaged products)

IA



Business case

a **sound business case**; business case together with...



Business model

...the specifications of an **inclusive business model**, covering all actors of the value chain (from feedstock providers through to the final sellers)



Business Plan

in addition, a **detailed preliminary business plan** in a separate Annex

RIA: Economic viability check



- ✓ Dedicated section on 'economic viability'
- ✓ Focus on the **potential market of the products and/or processes** to be developed including some **quantitative information** for example on the market size and trends
- ✓ **Analysis of the value chain**
- ✓ if possible, include project projections estimates of costs of production/revenues of products or technologies

IA: Business case / model / plan

AWP GLOSSARY

Business Case

- A **justification for investing in a project to generate a profitable business**. It is typically related to pursuing an opportunity or solving a problem.
- It **may include technical, economic, market, social, environmental and regulatory aspects**, even if only at a qualitative level.
- A business case includes an **evaluation of risks, costs and benefits** of the proposed project versus alternatives.
- It may involve a relatively high level of uncertainty.

Business Model

- A **description of the way** in which a commercial activity for conducting a **business, generates revenues and value** for its customers/ involved stakeholders.
- It describes the **costs and revenues**, the **actors involved** and the **relationships** among them.
- It **includes a quantification of the cost and revenue streams** but no time dimensions or specific actions.

Business Plan (only IA-Flag)

- A **detailed description** of how the business will be developed.
- It includes a **quantification** of the **cost structure, financing thereof, and foreseen revenues, a description of the actions** to be performed, their **timing** and the **actors involved**.
- It includes **technical, economic, market, social, environmental and regulatory aspects** and is **based on data**, as much as possible, **and/or assumptions** (to cover areas where data are not available).
- The level of uncertainty is lower than in the Business case. **Risks** are described and **contingencies** are foreseen.

CBE JU specific requirements



| Specific requirement of the CBE JU Call 2023 | Type of action | Where to include it in Part B |
|---|---|--|
| Feedstock sourcing | RIA and IA, incl. FLAG | Part B – Structured question (Y/N) in the introduction |
| Feedstock sustainability requirements (a,b,c,d) | RIA and IA, incl. FLAG | Part B – Structured question (Y/N) in the introduction |
| Description of feedstock | RIA and IA, incl. FLAG | Part B – 1.2 Methodology |
| Environmental performance - Ex-ante assesment <ul style="list-style-type: none"> • Identification of environmental issues • Estimation of environmental sustainability • Estimation of carbon removal | RIA and IA, incl. FLAG | Part B – 1.2 Methodology |
| Ex-post assessment of environmental sustainability and circularity <ul style="list-style-type: none"> • Dedicated task • Dedicated task or WP (LCA) • Dedicated task or WP (LCSA) | RIA IA FLAG | Part B – 3.1 Workplan and resources |
| Economic viability | RIA | Part B – 2.2 Measures to maximise impact |
| Business case | IA, incl. FLAG | |
| Business plan | FLAG | Annex (Business plan) |
| Recommendations to stakeholders | IA, incl. FLAG | Part B – 3.1 Workplan and resources |
| Multi-actor approach | IA, incl. FLAG RIA and CSA, when specified | Part B – 1.2 Methodology |

Multi-actor approach: who and why



Ensures adequate involvement of all **key actors in the value chains** relevant for the topic and the objective of the proposed project.



Involvement along **the whole project's course**: from project idea, planning to implementation, communication and dissemination of results and to demonstration

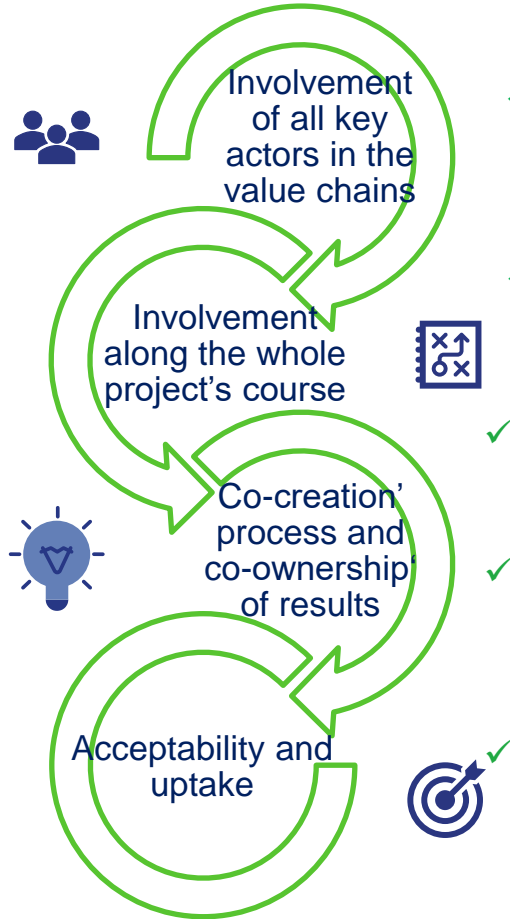


'Co-creation' process: the practical and local knowledge of key actors are used to develop solutions and create **'co-ownership' of results**



It results in **speeding up the acceptability** and uptake of new products, approaches and solutions developed by project

Multi-actor approach



- ✓ **Relevant actors** are clearly **identified** (e.g. depending on the topic, primary producers, processing industry, end-users, brand owners, etc.).
- ✓ **Sufficient representation of relevant actors** consortium or/and with other forms of engagement.
- ✓ **Needs/ problems/challenges/opportunities** of key actors (from biomass supply to end-users) are considered from concept idea to implementation.
- ✓ **High-quality knowledge exchange activities, tools or/and mechanisms** enable co-creation and co-ownership of results (e.g. participative workshops, advisory bodies, platforms, etc.) are planned.
- ✓ **Dissemination and exploitation channels/ actions** addressing to the targeted actors are used.

Multi-actor approach in practice

“Project XXX will develop an **Advisory Board of Farmers** including regional authorities, food manufacturers, farmers, biorefinery owners, investors etc.”

“In order to ensure a good engagement of the key stakeholders, **project partners cover the whole value chain from the field to the table** (farmers, technology providers, manufacturers, environmental assessment experts, end users).”



“**6 interregional workshops** will be held during the project to connect with actors from other regions not directly involved in the project“

“Project XXX consortium will integrate both primary producers and owners / providers of side streams **directly and through biomass suppliers in contact with project partners.**”



Horizon Europe + CBE requirements

Horizon Europe (HE) rules

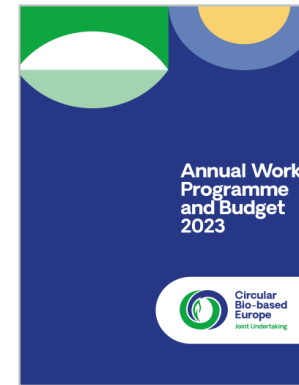
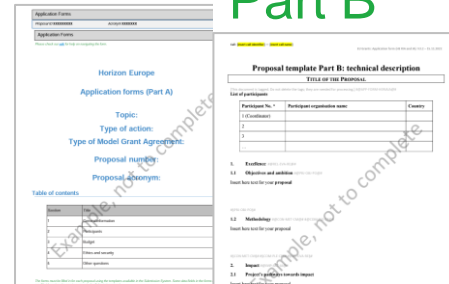
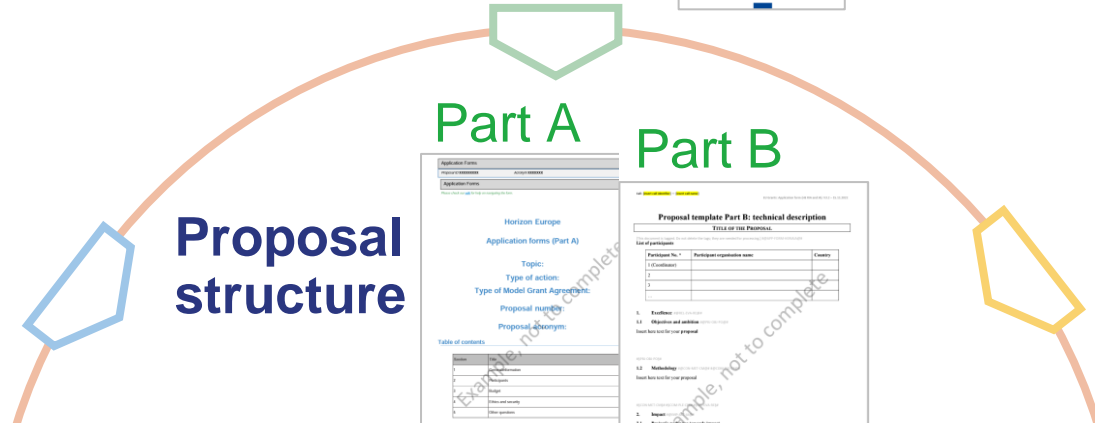
- Eligibility
- Admissibility
- General annexes

HE evaluation criteria

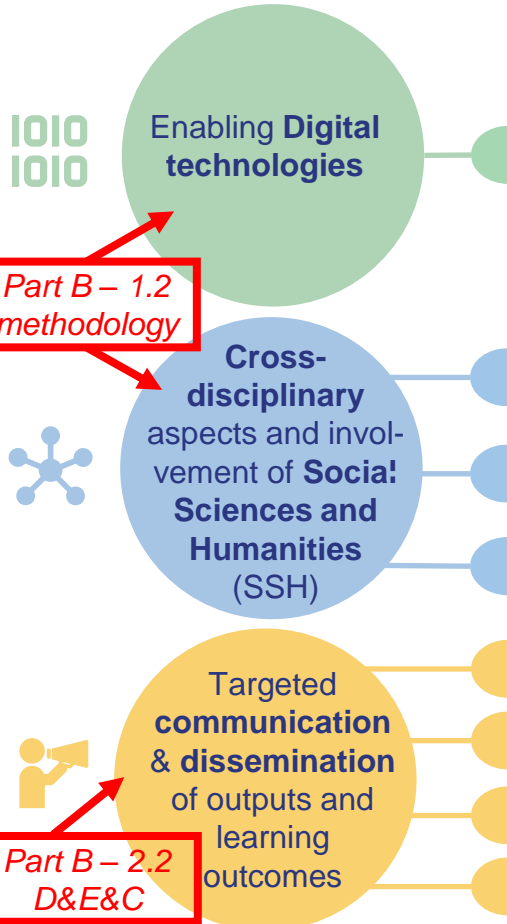
- Excellence
- Impact
- Implementation

CBE Annual Work Programme 2023

- Topics
- Specific requirements
- **Cross-cutting elements**
- Budget



Cross-cutting elements (AWP, 2.2.3.2)

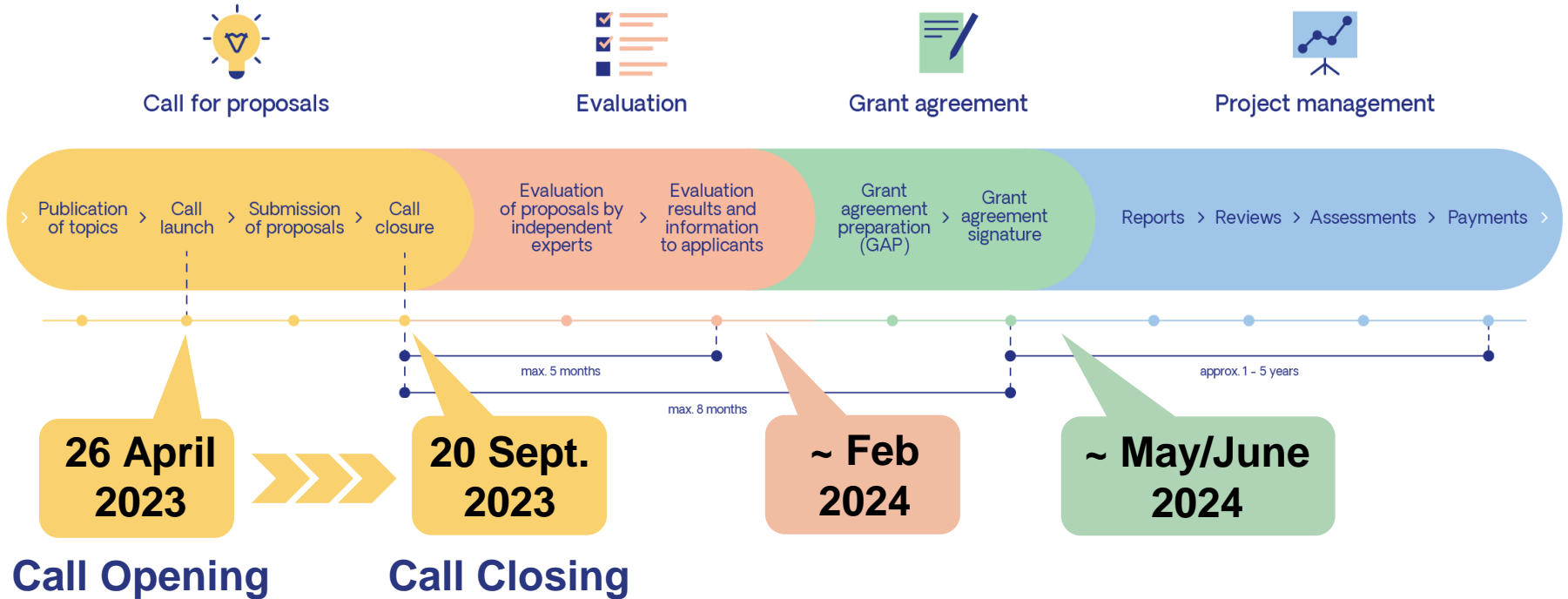


- Apply and/or adapt **existing/mature or novel digital technologies** provided that they are instrumental to achieving the project's outcomes and scope.
 - ✓ **RIA and IA, incl. Flagships:** chemicals, materials, catalysts and process design & modelling (including bioinformatics); process monitoring and optimization; tracking and tracing; data analytics and data management
 - ✓ **IA, incl. Flagships:** (real-time) process monitoring and optimisation (incl. environmental performance); predictive maintenance and plant engineering.
- Foster **cross-disciplinarity** and consider the social, economic, behavioural, institutional, historical and/or cultural dimensions, as appropriate, of the proposed circular bio-based innovations.
- Ensure that **contributions from the SSH are integrated** at various stages of their proposed project, and the actions required, participants and disciplines involved.
- Consider **public awareness raising, social engagement and social impact** aspects with respect to circular bio-based solutions.
- **Disseminate** the outputs and learning outcomes from the project.
- Incorporate **publications** on data, methodologies, including LCA assessment-related data to peer-reviewed scientific journals and conferences.
- Contribute data and results to the European Commission's **Knowledge Centre for Bioeconomy**.
- Add links with any trusted **repositories** for data, results and methodologies.

CBE JU Call 2023:
Proposal preparation

4

Proposal preparation



A good and convincing CBE JU proposal



Ensure that the proposed work is within the **scope of the topic**



Demonstrate that the idea is **ambitious** and goes beyond the **state of the art**



Your **methodology** must take into account open science practices and interdisciplinarity (+ gender dimension, if applicable)



Show clearly how the proposed work could contribute to the **outcomes and impacts** described in the work programme (the pathway to impact)



Describe the planned measures to **maximise the impact** of the project ('plan for dissemination & exploitation including communication activities')



Demonstrate the quality of the **implementation**, including work plan, resources and participants

Read carefully the **AWP2023** and the **Strategic Research and Innovation Agenda (SRIA)**, for a good understanding of the context and long-term objectives of CBE JU !!!

In addition to having an **excellent idea** for a CBE JU project, you'll need to...

Address ALL
topic requirements
CBE JU specific requirements

Understand the
evaluation criteria
(including novelties of
Horizon Europe)

Be **clear** and
convincing!

In other words,

an **excellent idea** is the basis of a good proposal but **is not sufficient....**

The
**expected impacts
and implementation
aspects** are as
important !

The proposal
should excel in
**each single
criterion !**

Be **specific** in
your objectives and
expected impacts and
clearly demonstrate
how you aim to
implement and
sustain them

Aim for total “Topic eclipse”

Topic⁺

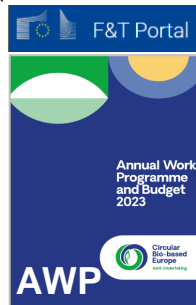
Proposal

Topic⁺ Proposal

Proposal

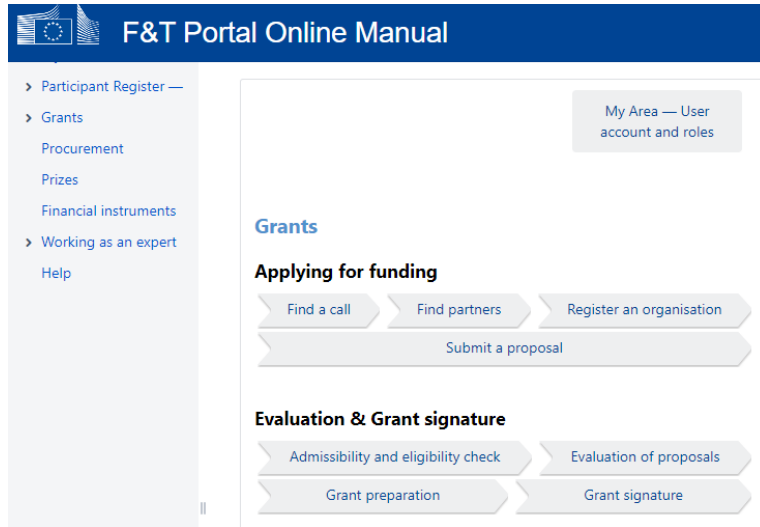
Topic⁺ = Topic text + HE requirements + CBE specific requirements
+ CBE cross-cutting elements

every single word in
topic text counts!



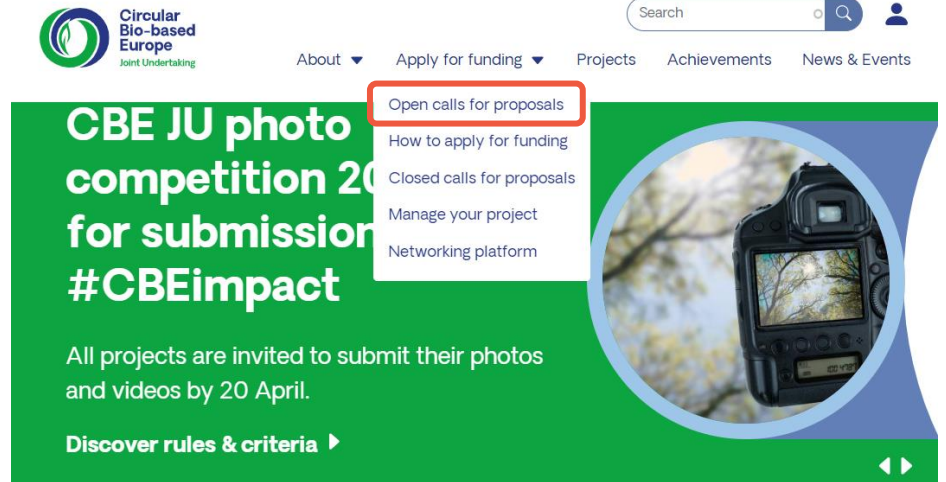
every requirement & cross-cutting
element counts!

Two main sources of information



The screenshot shows the 'F&T Portal Online Manual' interface. On the left is a navigation menu with categories like 'Participant Register', 'Grants', 'Procurement', 'Prizes', 'Financial instruments', 'Working as an expert', and 'Help'. The main content area is titled 'Grants' and includes a 'My Area — User account and roles' button. Under 'Grants', there is a section for 'Applying for funding' with a flowchart: 'Find a call' → 'Find partners' → 'Register an organisation' → 'Submit a proposal'. Below that is a section for 'Evaluation & Grant signature' with a flowchart: 'Admissibility and eligibility check' → 'Evaluation of proposals' → 'Grant preparation' → 'Grant signature'.

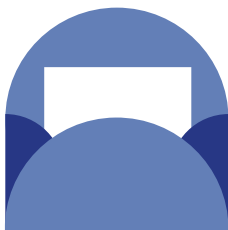
<https://webgate.ec.europa.eu/funding-tenders-opportunities/display/OM/Online+Manual>



The screenshot shows the CBE JU website. The top navigation bar includes 'About', 'Apply for funding', 'Projects', 'Achievements', and 'News & Events'. A search bar and a user profile icon are also present. A dropdown menu is open under 'Apply for funding', with 'Open calls for proposals' highlighted in a red box. Other items in the menu include 'How to apply for funding', 'Closed calls for proposals', 'Manage your project', and 'Networking platform'. The main content area features a green banner for the 'CBE JU photo competition 2023 for submission #CBEImpact'. The text on the banner says 'All projects are invited to submit their photos and videos by 20 April.' and includes a link 'Discover rules & criteria'. A circular image of a camera is on the right side of the banner.

<https://www.cbe.europa.eu/open-calls-proposals>

More information



Subscribe to
CBE JU
newsletter



cbe.europa.eu



Become a **BIC**
Member



biconsortium.eu



Horizon Europe
Funding and
Tender portal



europa.eu/!jH76RF

Do you want to be an expert evaluator?



CBE JU (and the whole EU research family) are always looking for **new, competent experts** in diverse fields

To be considered for the Call 2023 evaluations, please:

- Create or update your **expert profile** via <https://ec.europa.eu/info/funding-tenders/opportunities/portal/screen/work-as-an-expert>
- **E-mail** experts@cbe.europa.eu ideally by 8 May 2023, mentioning your expert profile number (format EX20XX1234567)



**Circular
Bio-based
Europe**
Joint Undertaking

Contact us

info@cbe.europa.eu
www.cbe.europa.eu

Follow us



Subscribe



 Bio-based Industries
Consortium



Co-funded by
the European Union