



Instituto  
de Medicina  
Molecular

João Lobo  
Antunes

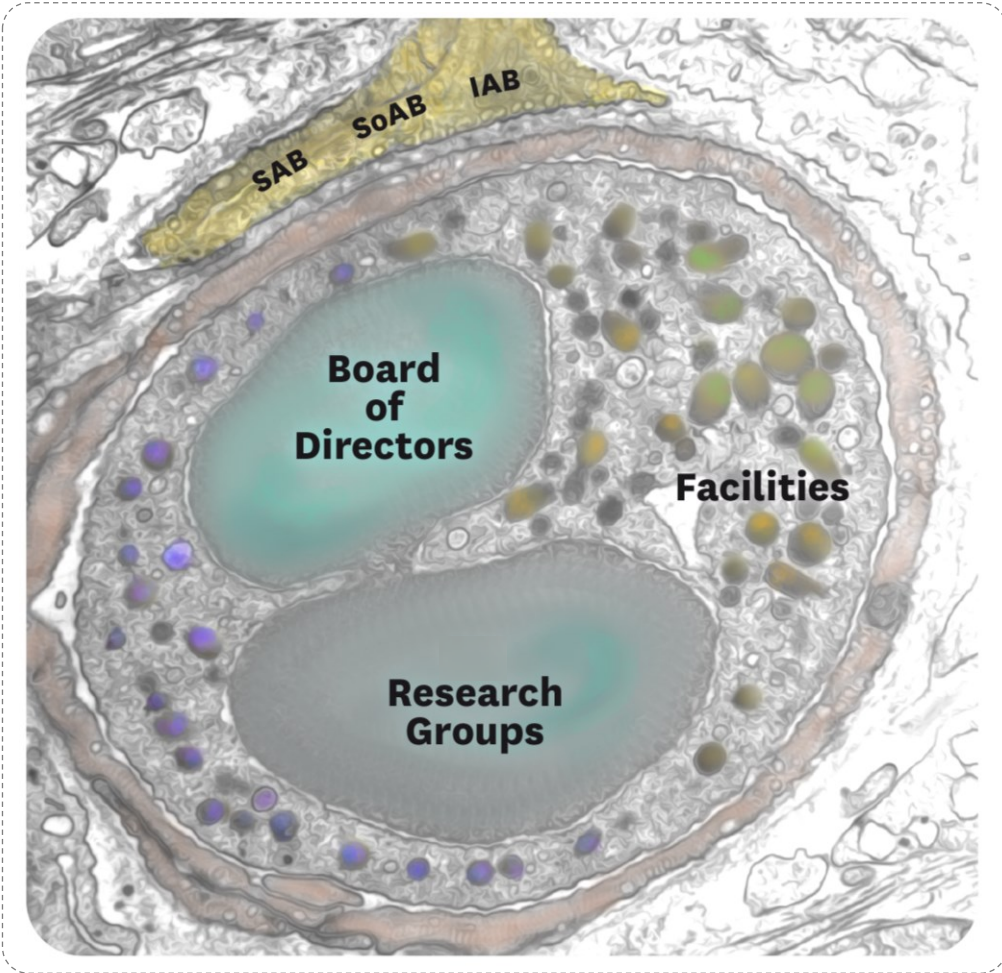
**Infoday Horizon Europe: Exploring The Upcoming Opportunities**

**Session #1 | Pathways to Research and Innovation**

**October 26, 2023**

● A collaborative ecosystem of 677 people!

Horizontal structure, with no artificial boundaries, promoting cooperation



“Like a Cell”

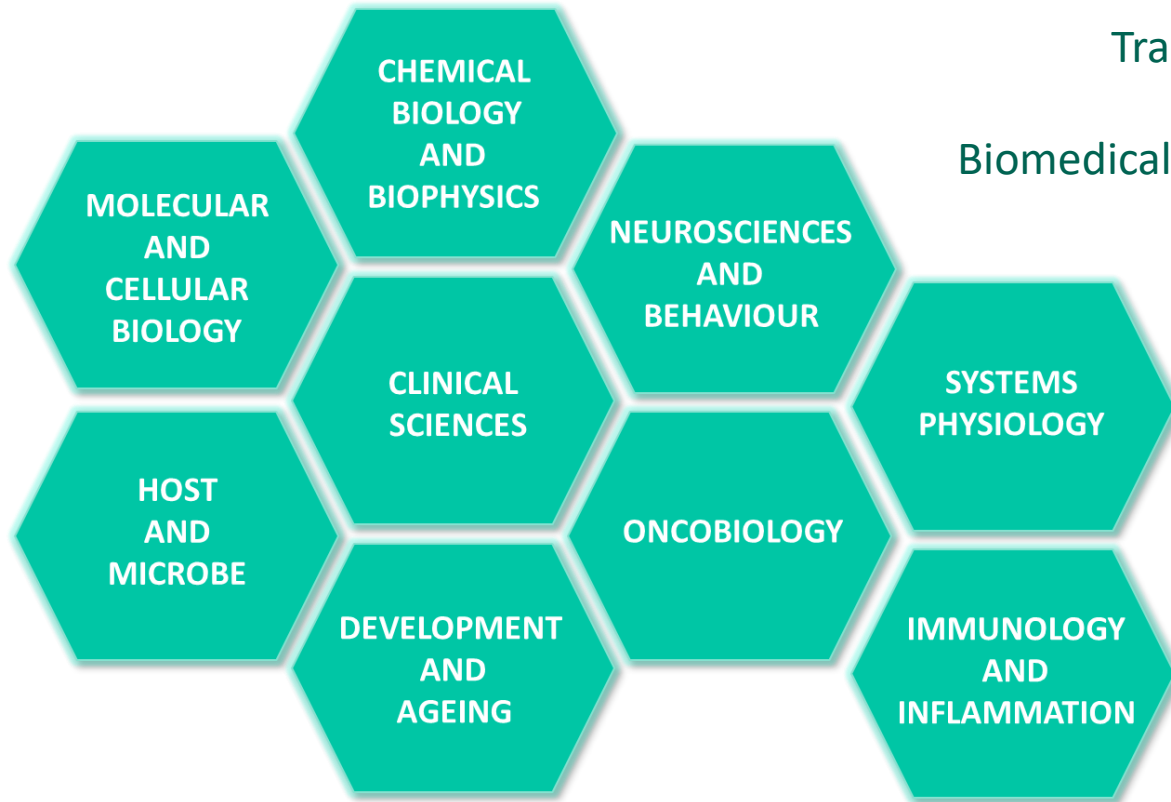
## iMM Community



# Thematic Lines of Research

Fostering new and disruptive discoveries to improve the health of the city

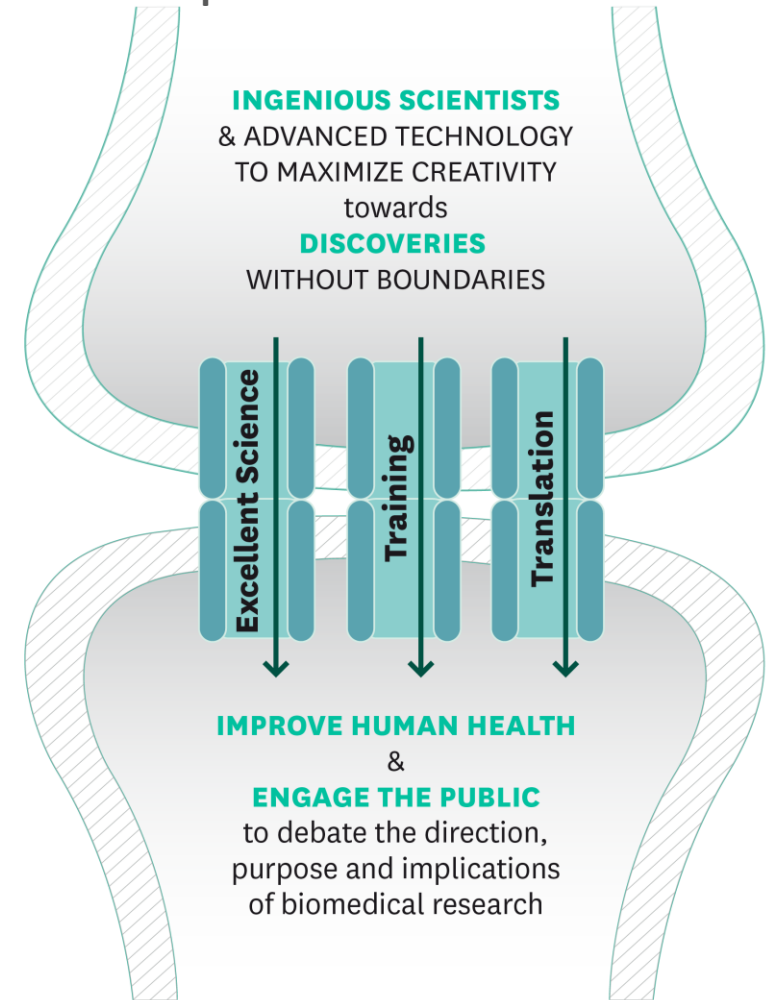
## Interest Groups for Multidisciplinary & Critical Mass



Basic  
Translational  
Clinical  
Biomedical Research

Strategic connection:  
Lisbon Medical Academic Centre (CAML)

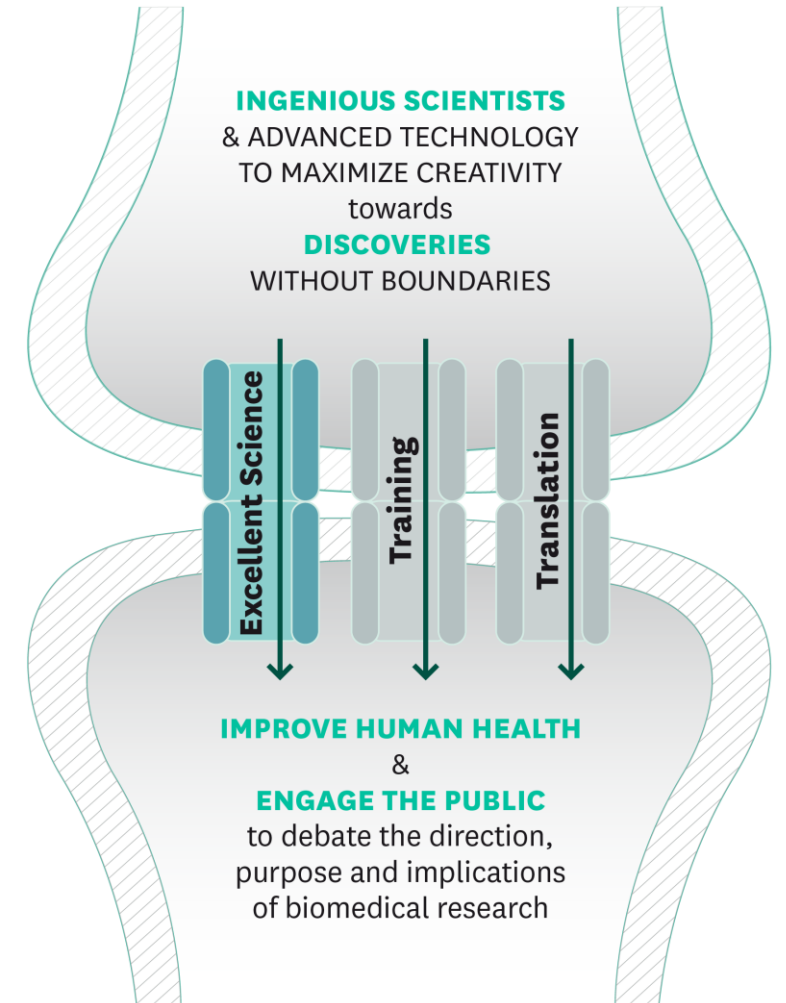
## Chasing questions in patient-centred research



# Strategic Objectives

## 1. Promote Scientific Excellence - delivering on key public policies

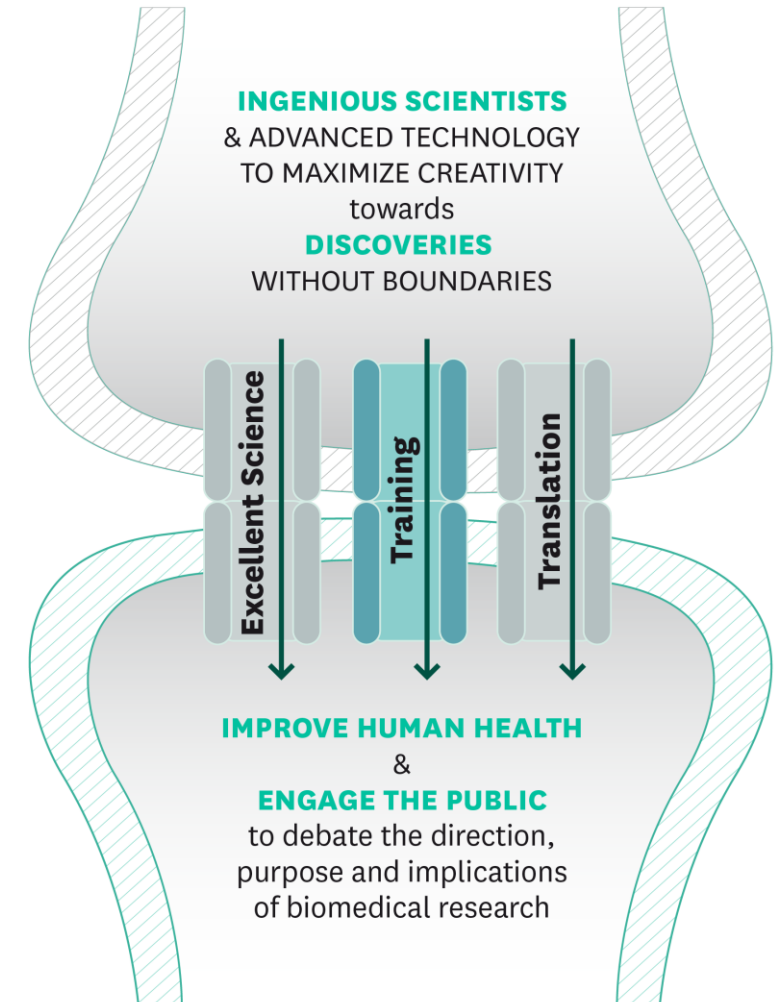
- **Attract, support** and continuously **review** our faculty and their projects
- Reduce artificial scientific barriers and encourage **interdisciplinarity**
- Promote **internationalization**
- Invest in state-of-the art **technological platforms** and support services
- Develop **internal funding schemes** and tools for bold initiatives
- Promote the **open-access dissemination** of the results of our research



# Strategic Objectives

## 2. Nurture Advanced Training and Career Development - delivering on key public policies

- **Attract** the most curious and talented individuals
- Provide the **highest quality training** to early career scientists, namely through dedicated **MSc, PhD and Post-Doctoral programs**
- Encourage and foster **Independence** and **creativity** at all career stages
- Support **tailored** training and continued **professional development**
- Promote an **entrepreneurial mindset**



# Strategic Objectives

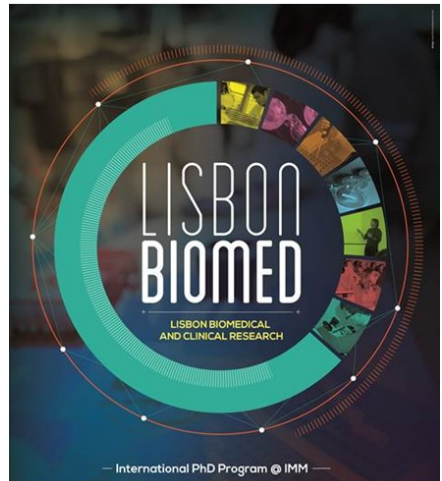
## 2. Nurture Advanced Training and Career Development - delivering on key public policies

An integrative view

Critical thinking

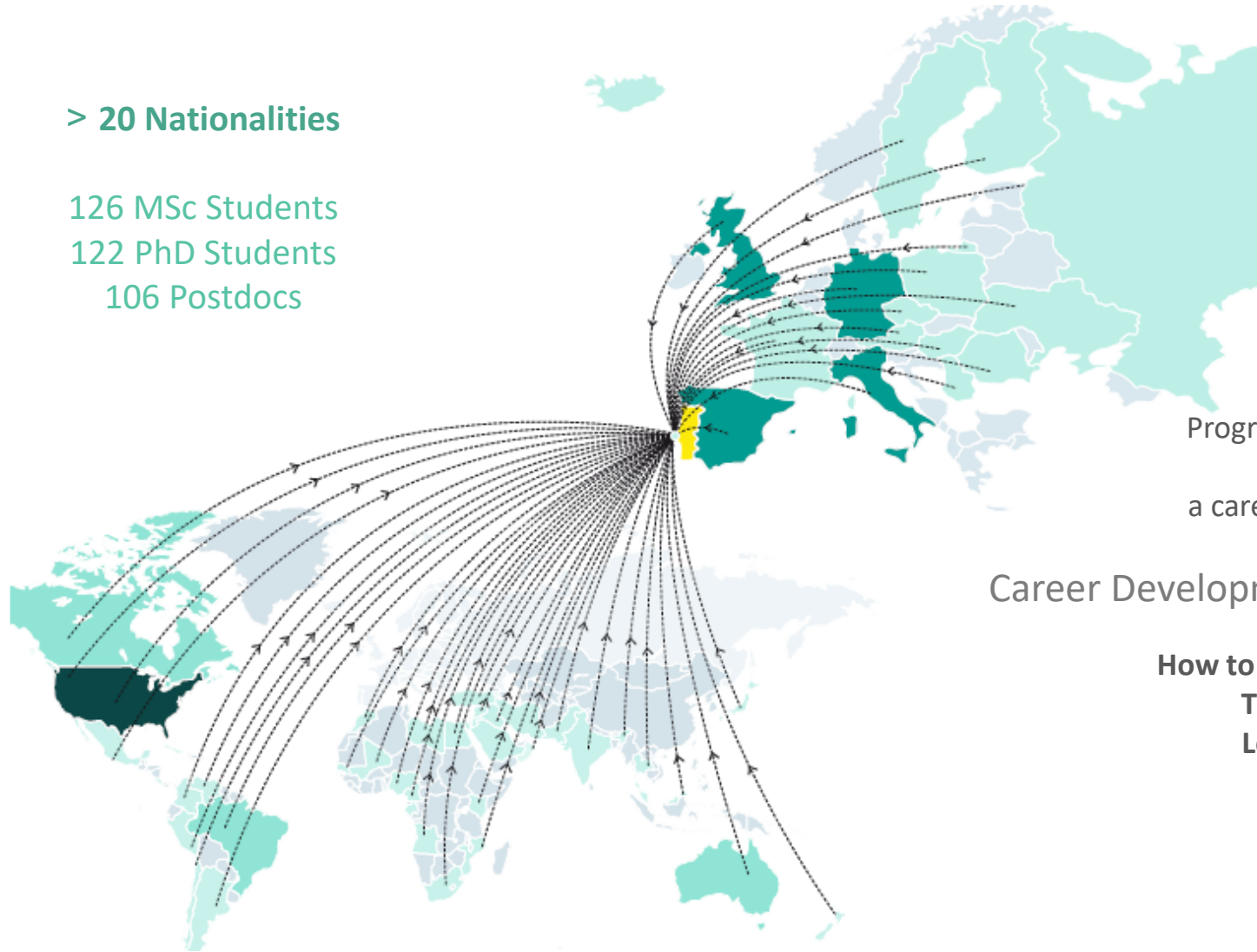


H2020 MSCA Innovative Training Networks



> 20 Nationalities

126 MSc Students  
122 PhD Students  
106 Postdocs



**Finding a niche  
Fostering a career**



Program to help researchers to develop a process of self-knowledge, a career plan and set professional goals

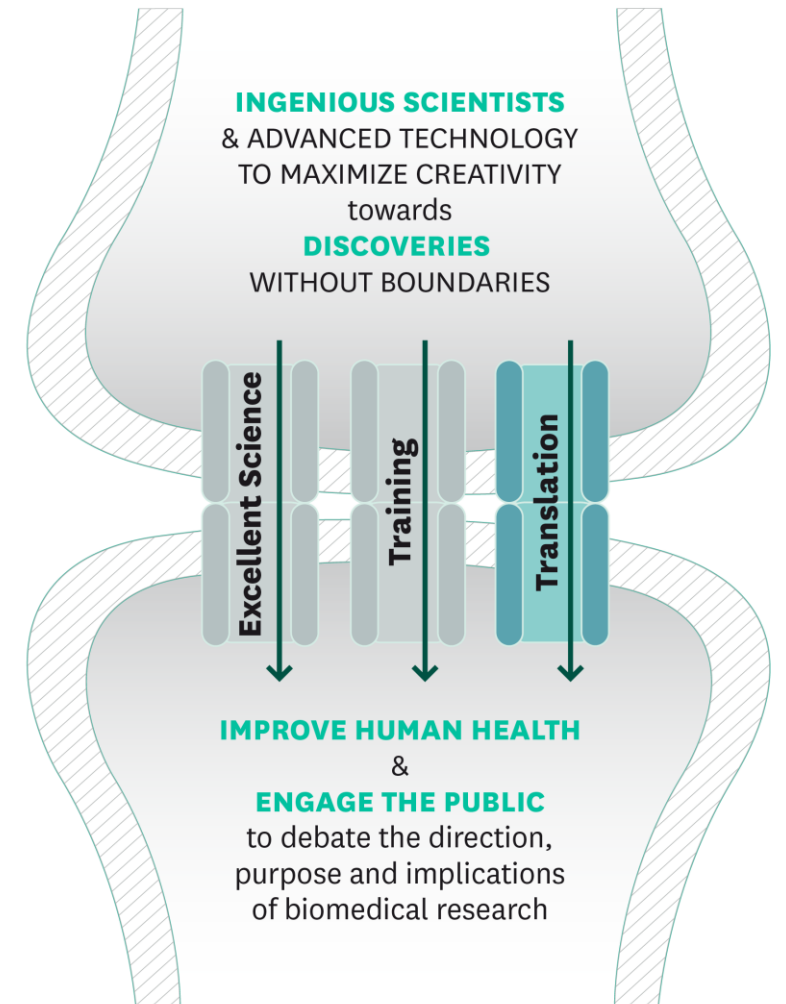
Career Development Executive Committee

- How to write a Career Development Plan
- Training Program for the Next Step
- Leadership and Management skills
- Science Communication
- Entrepreneurship

# Strategic Objectives

## 3. Galvanize Translation for Human Health - delivering on key public policies

- Increase portfolio of early translation projects (**proof-of-concept funding**)
- Increase **industry funding**
- Create **start-up programs** (entrepreneurs-in-residence; pre-seed accelerator)
- Create **investment fund**
- Equity position in new ventures
- Attract the best entrepreneurs to lead new ventures



# Strategic Objectives

## 3. Galvanize Translation for Human Health - delivering on key public policies

KPIs of TTO core activities  
(2018 – 2022)

**111**  
New Inventions

**6**  
Spin-offs under  
development

**370**  
Collaborations  
with Industry  
discussed

**162**  
Patent  
applications

**4**  
Spin-offs

**210**  
Collaborations  
with Industry  
formalised

**~46%**  
Patents licensed

**71.35M€**  
Funding raised

**6.75M€**  
Industry funding



# Strategic Objectives

## 3. Galvanize Translation for Human Health - delivering on key public policies

### iMM research and IP assets fuel a strong and attractive pipeline in therapeutics

	ASSET	LAB	PARTNER(S)	DISCOVERY	PRECLINICAL	CLINICAL
ONCOLOGY	New target for ALT cancers	CAzzalin				
	TRPV2 antagonists	GBernardes				
	TEC inhibitors	GBernardes				
	New treatment based on CO releasing	GBernardes				
	Cell therapy based on $\gamma\delta$ T cells	BSSantos				
	Development of traceless strategies for the selective release of BET inhibitors in cancer cells	GBernardes				
	RANK pathway + CDK inhibitors	LCosta				
	Induction of celular lethality in cancer	SAlmeida				
	Gene therapy	JBarata				
	Anti-IL-7R antibodies	JBarata				
METAB. DISEASES	New target (Slc6a2) for obesity	GBernardes				
	MULTIPLE	Peptide compounds to reduce side effects of CB1 receptor agonists	MCastanho	Disrupt Therapeutics		
Method to produce TRM cells		MVeldhoen	Start-up to be created			
IMMUN.	Undisclosed target to inhibit T cell activity in inflammation	MVeldhoen				

	ASSET	LAB	PARTNER(S)	DISCOVERY	PRECLINICAL	CLINICAL
INFECTIOUS DISEASES	Piperlongumine (PL) for SARS-CoV-2	GBernardes				
	rG4 degraders	GBernardes				
	Anti-malarial small molecules	MMota				
	Peptide conjugates for Zika	MCastanho				
	New porphyrin-CPP conjugates with antiviral activity	MCastanho				
	New antimicrobial agents	MPrudêncio				
	Plant extracts with antiviral activity	PSimas				
	Neutralizing SARS-CoV-2 antibodies	LGraça				
NEUROSCIENCE	New drugs for AD and Epilepsy	ASebastião				
	New target (TrkB-T1) for absence seizures	ASebastião				
	Use of Eletriptan Hydrobromide for SCI	LSaúde				
CARDIO.	ASO HCM	LSaúde				
		MCFonseca				

# Strategic Objectives

## 3. Galvanize Translation for Human Health - delivering on key public policies

### An entrepreneurial institute from the onset



2004  
**Molecular Diagnostics**  
Acquired by SYNLAB in 2022



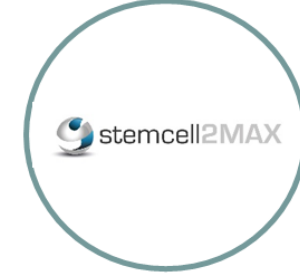
2004  
**Therapeutics (biologics)**  
License agreements  
Active



2013  
**Therapeutics (cell therapy)**  
License agreement  
Acquired by GammaDelta Tx (Takeda) in 2018



2014  
**Vaccines (malaria)**  
Inactive



2015  
**Biotechnology (cell culture)**  
Inactive



2017  
**Diagnostics (enabling technologies)**  
License agreement  
Active



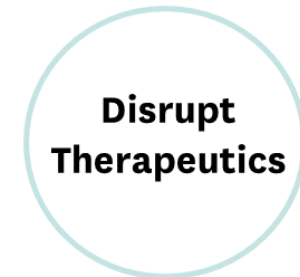
2018  
**Therapeutics (cell therapy)**  
License agreement  
Inactive



2019  
**Therapeutics (small molecules)**  
License agreement & equity  
Active



2020  
**Therapeutics (small molecules)**  
License agreement & equity  
Active



2023  
**Therapeutics (small molecules)**  
License agreement & equity  
Active



# Strategic Objectives

## 3. Galvanize Translation for Human Health - delivering on key public policies



**MM** Instituto de Medicina Molecular | João Lobo Antunes

Catalogue of capacities

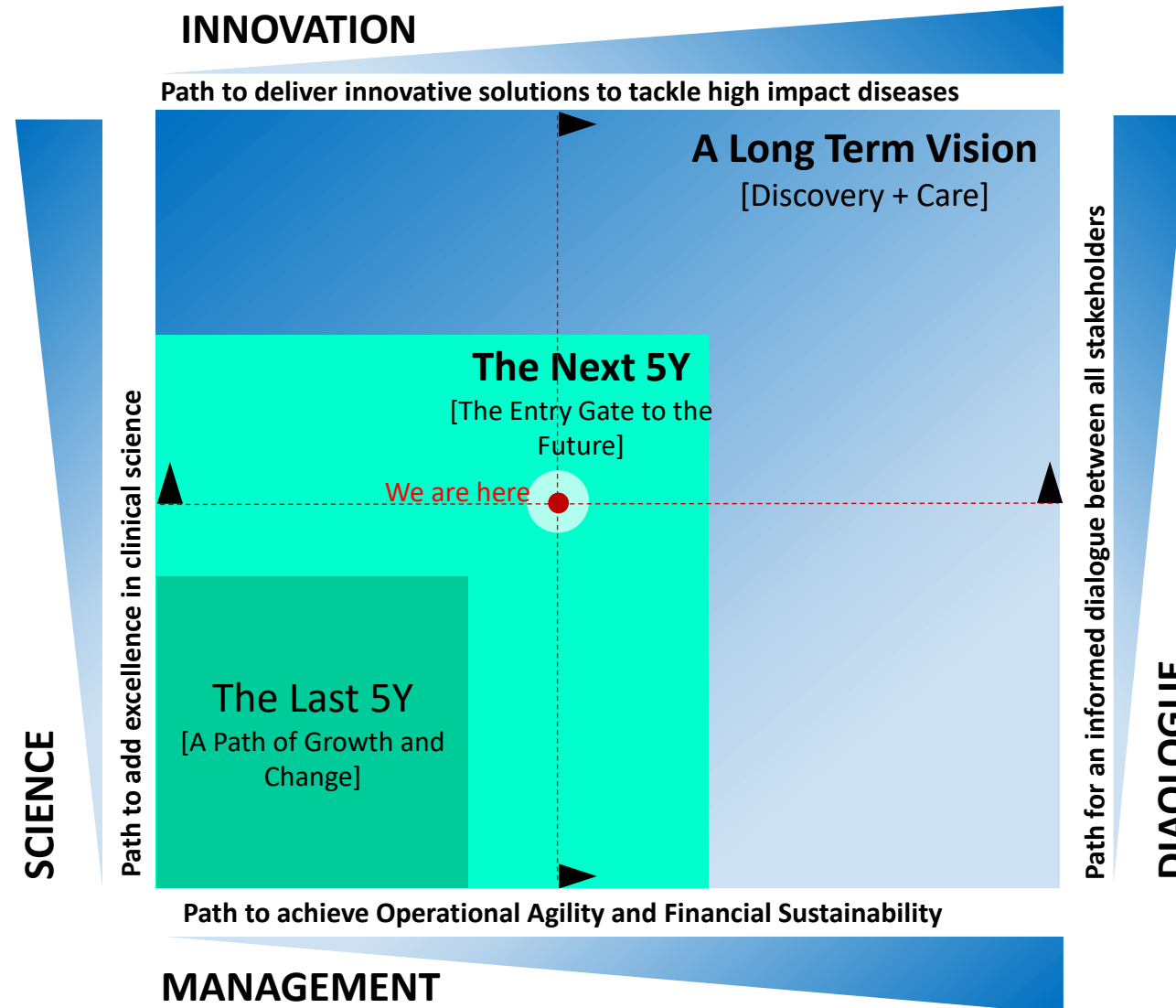
### Promoting partnerships with biotech and pharma industry





# iMM – The Future

To achieve excellence in **Clinical Research & Real-World Experimental Medicine**



# iMM – The Future

## Investing in iMM's R&I capacities

### Need:

- . Expand excellence to clinical and translational research
- . Catch the digital transformation train
- . State-of-the-art RI and powerful drug discovery platforms and tools following tech & market trends



### Solution:

- . Mission-driven, human-centred and data-powered clinical and translational research
- . New digital facilities - omics, AI / data, blockchain
- . World-class R&T facilities (digital, equipment), DD platforms and human-based models



iMM-CARE: BOOSTING CLINICAL RESEARCH FOR THE BENEFIT OF SOCIETY

**iMM-CARE**  
Grant agreement ID: 101060102

DOI  
[10.3030/101060102](https://doi.org/10.3030/101060102)

**Start date**  
1 May 2023


**End date**  
30 April 2029

**Funded under**  
Widening participation and spreading excellence

**Total cost**  
€ 15 000 000,00

**EU contribution**  
€ 15 000 000,00

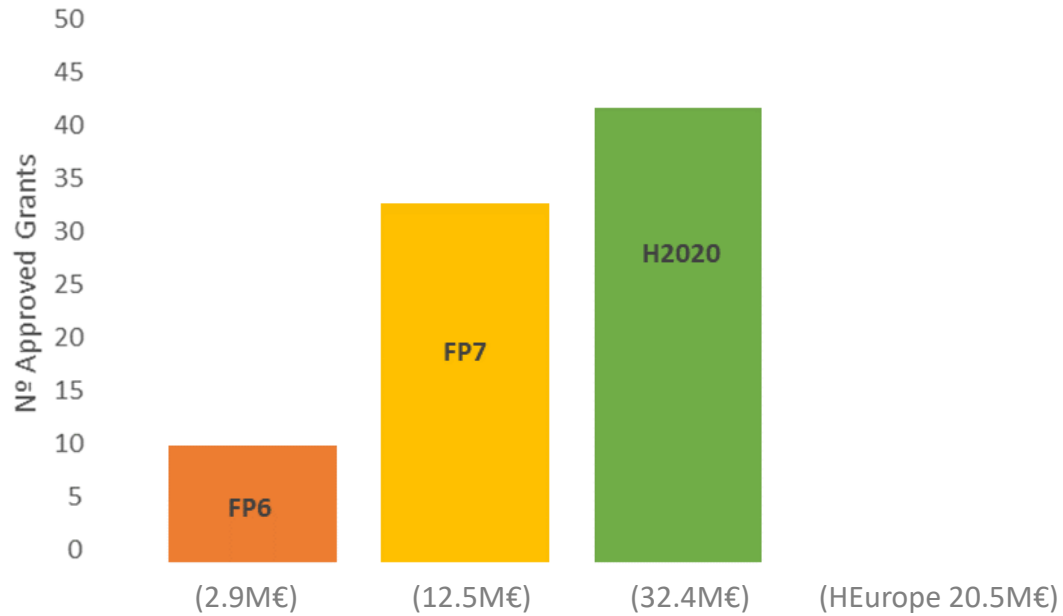
**Coordinated by**  
INSTITUTO DE MEDICINA MOLECULAR JOAO LOBO ANTUNES  
Portugal



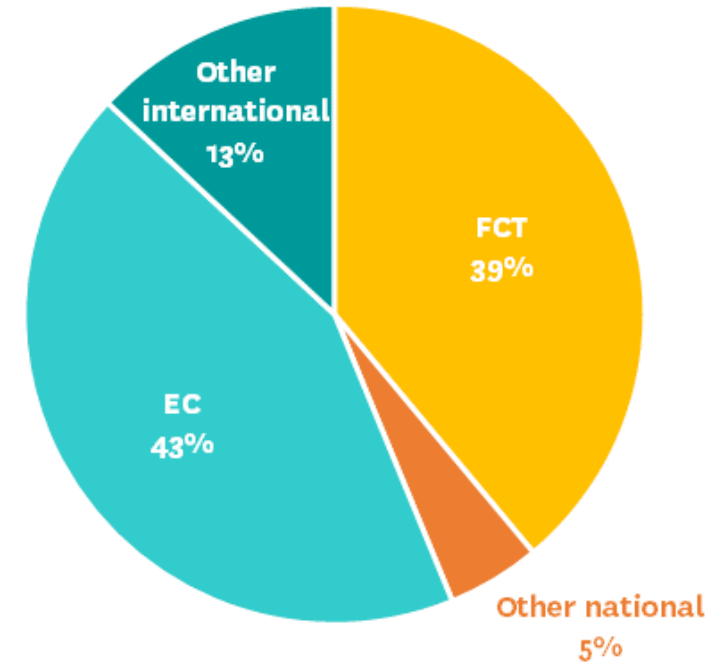
# iMM in Framework Programmes for R&I

## Positive Pathway in EC's Framework Programmes

### iMM in FP6 » FP7 » H2020



Secured Funding Critical for  
iMM's Sustainability





**Instituto de Medicina Molecular João Lobo Antunes**



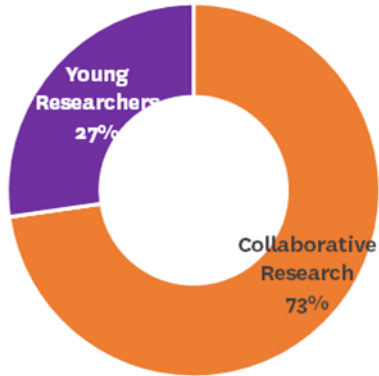
**THANK YOU FOR YOUR ATTENTION**



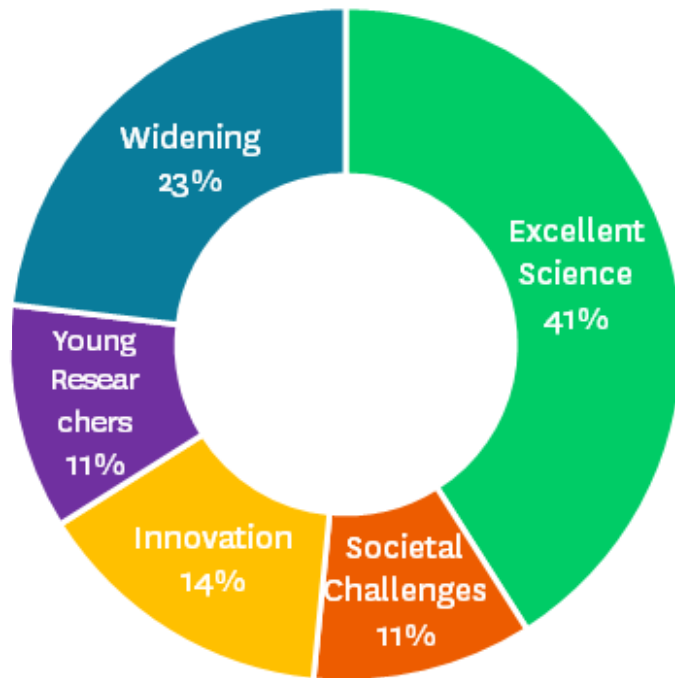
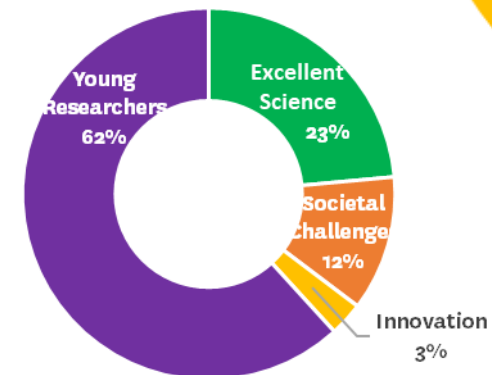


# EC H2020 funding (2014 – 2020) - iMM

## FP6



## FP7



### Excellent Science

- . European Research Council (ERCs)

### Young Researchers

- . MSCA-Individual Fellowships
- . MSCA – Innovative Training Networks

### Societal Challenges (cluster Health)

- Consortium-based; Top-down; focus on translational/clinical research

### Innovation

- . Future Emerging Technologies (FET)
- Individual/consortium; Top-down/Bottom-up; focus on translational research/innovation for the market

### Widening

- . ERA-Chair | Twinning | Teaming
- Focus on capacity-building on R&I and improvement of institutional/regional/national scientific system