

CBE JU INFO DAY IN PORTUGAL

Towards national successes
in the 2024 call: information
day & technical visit

22th May 2024

13h30-17h45 | AVIPE



CBE JU INFO DAY IN PORTUGAL

Towards national successes in the 2024 call:
information day & technical visit



13:30 – 14:00

Welcome address
AVIPE & ANI

→ Recommendations from a CBE JU evaluator
→ Spotlights of the Bioeconomy Youth Vision

14:00 – 15:00

Technical visit to Adega Cooperativa de Palmela (national coordinator REDWine project, BBI JU)
AVIPE

Q&A

16:50 – 17:30

CBE JU: general overview & funding opportunities under call 2024 (challenges, priorities, rules, conditions for participation and evaluation, recommendations for successful proposals)

Moderator: **José Matos** (INIAV, SRG national representative)

→ **Pilar Llorente Ruiz de Azua** (CBE JU Programme Officer & Scientific Committee Secretariat)

15:00 – 15:30

Transfer to Cine-Teatro S. João (Palmela) & networking coffee

Moderator: **Maria João Fernandes** (ANI, SRG national representative)

Q&A

15:30 – 16:50
Highlighting some major achievements and success stories from PT participation in the bio-based sector

Testimonials from national actors
→ Key messages from BIC members (A4F, Biotrend, CeNTI, RAIZ, CCMAR)
→ Sharing experiences from successful participants (IST-ID, MC Sonae, AVIPE)

17:30 – 17:45

Overall discussion

17:45

Closing



AGÊNCIA NACIONAL
DE INOVAÇÃO

CBE-JU Info Day in Portugal- Towards national successes in the 2024 call: information day and technical visit

Maria João Fernandes, ANI - Programas I&I Europeus
Palmela, 22/05/2024

HORIZON EUROPE

PERIN



AGÊNCIA NACIONAL
DE INOVAÇÃO



Fundação
para a Ciência
e a Tecnologia

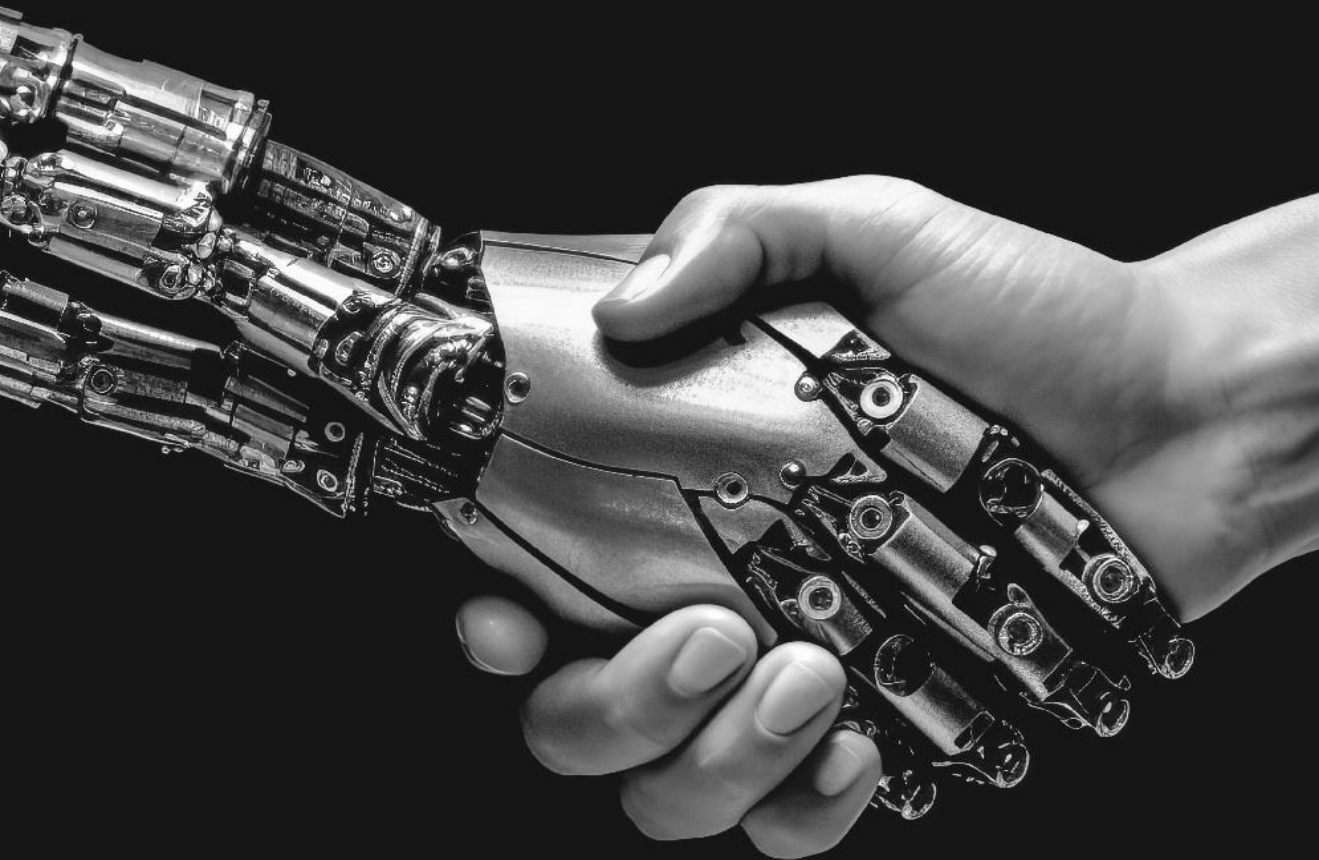


AGÊNCIA DE
INVESTIGAÇÃO
CLÍNICA
E INOVAÇÃO
BIOMÉDICA



AGÊNCIA ESPACIAL
PORTUGUESA





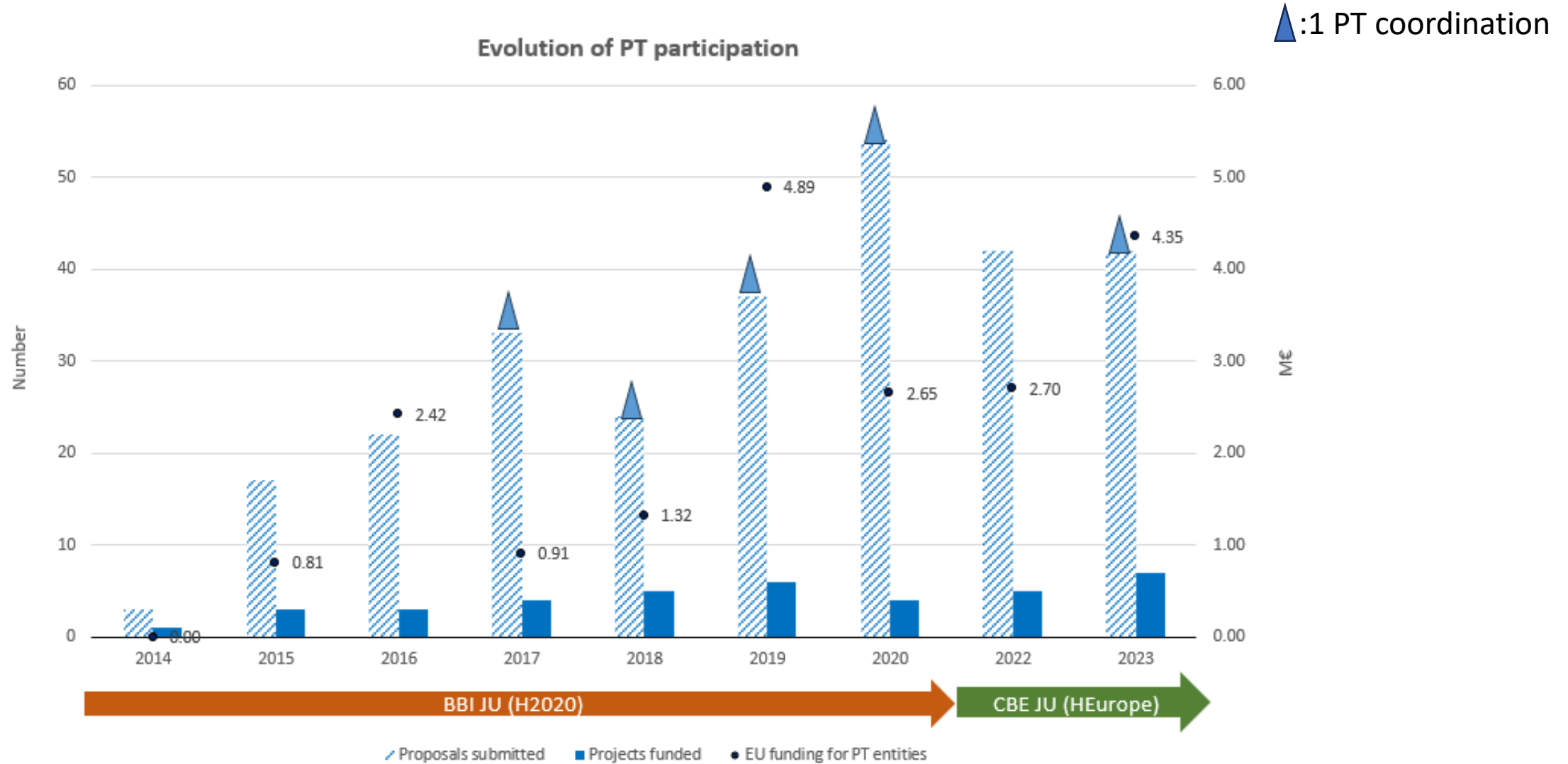
Nesta apresentação

- 1) Evolução Resultados BBI + CBE-JU : 2014-2023**
- 2) Zoom-In Participação PT**
- 3) CBE-JU: Representantes Nacionais**

BBI + CBE-JU •
Calls 2014-2023



BBI and CBE-JU- PT Evolution 2014-2023

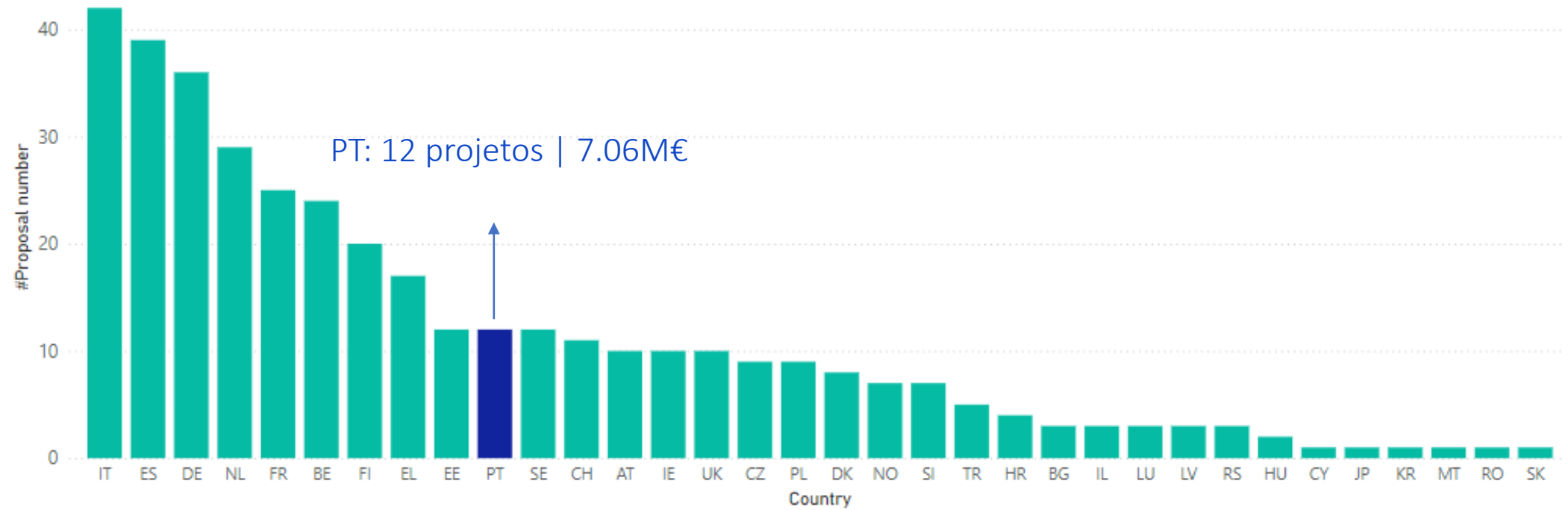


**Zoom In PT
participation:
CBE-JU 2022-23**

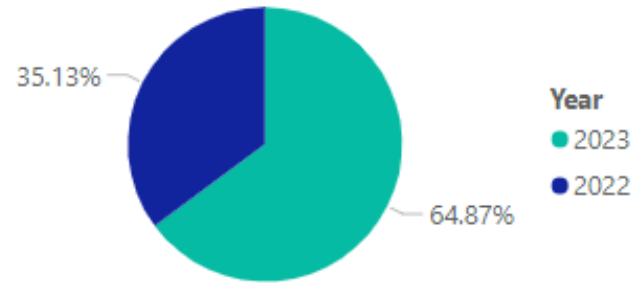


OVERVIEW CBE-JU 2022-23

#Projects by Country



Distribution of Funding by Year



333.65 M
Funding

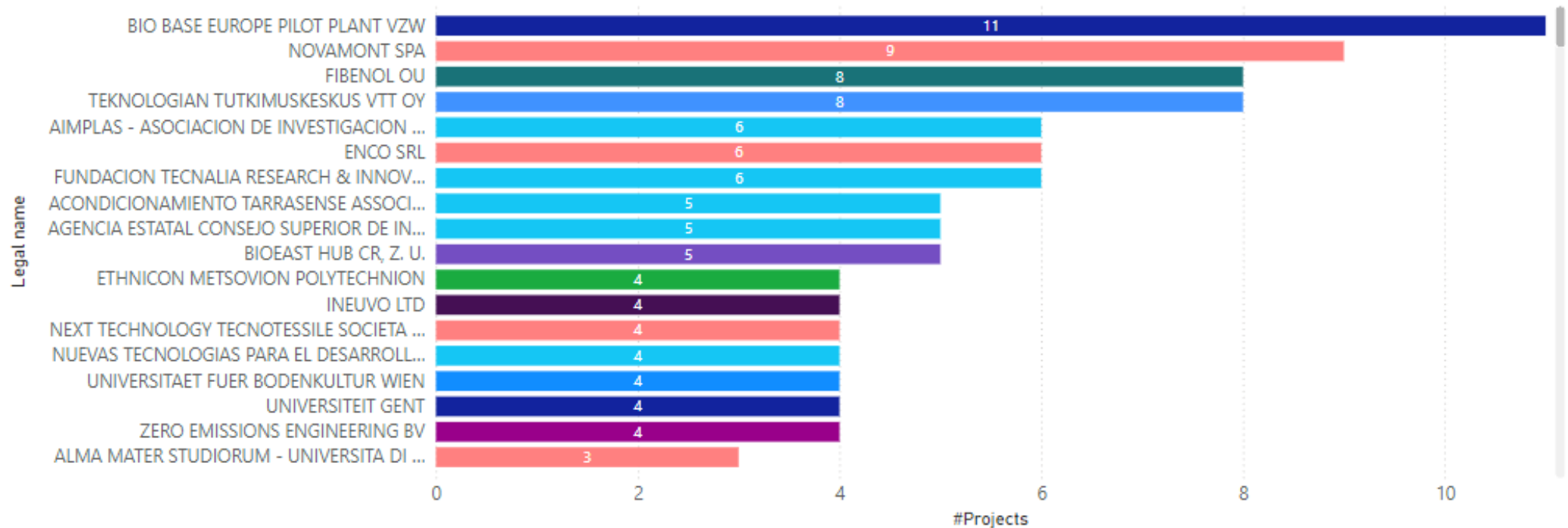
783
#Participants

52
#Projects

CBE-JU 2022-23: Project Distribution by Entity

#Projects by Entity

Country ● AT ● BE ● BG ● CH ● CY ● CZ ● DE ● DK ● EE ● EL ● ES ● FI ● FR ● HR ● HU ● IE ● IL ● IT ● JP ● KR ● LU ● LV ● MT ● NL ● NO ● PL ● PT ● RO ● RS ● SE ● SI ● SK ● TR ● UK



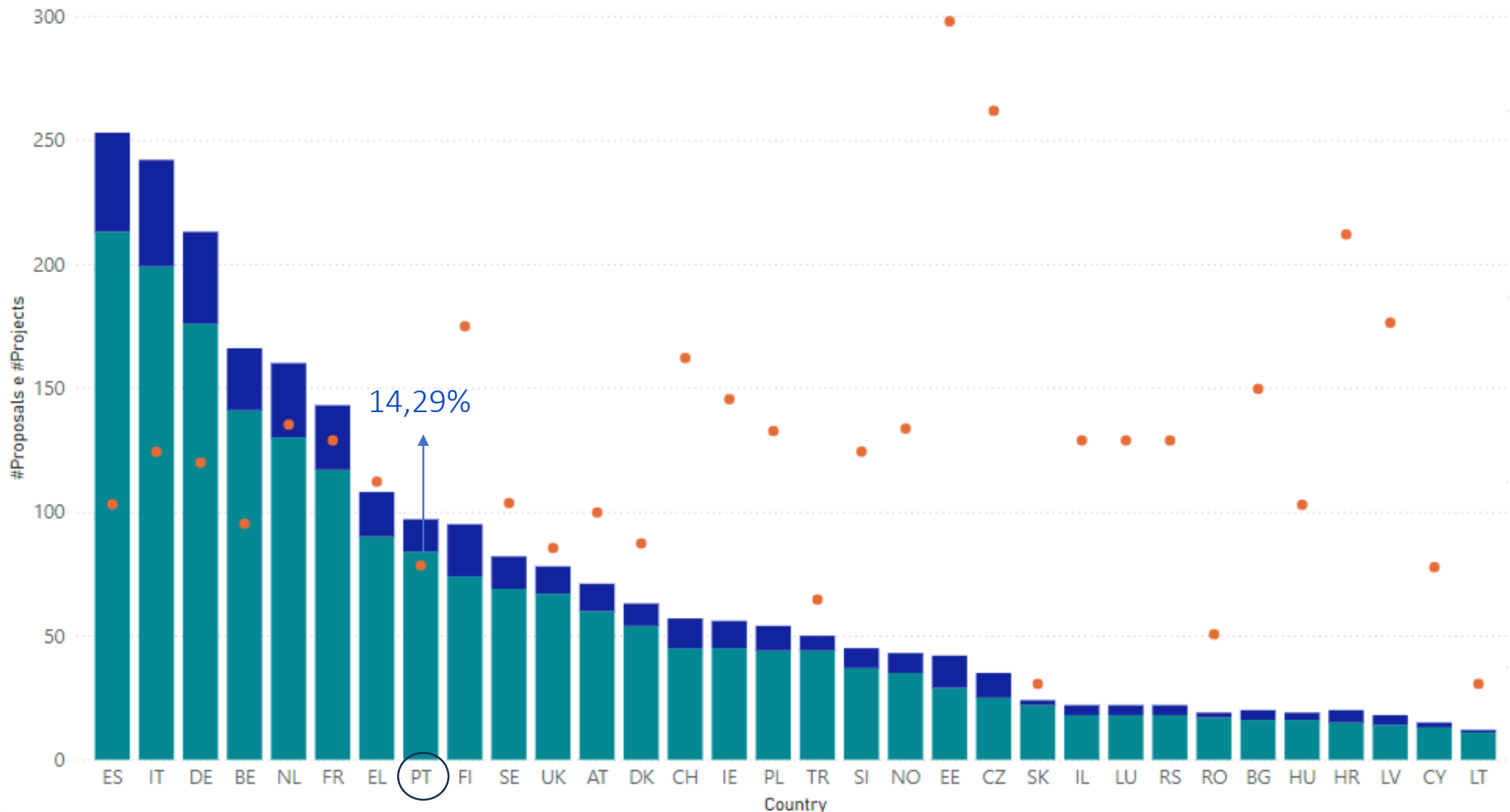
Projects Funding by Entity Type



CBE-JU 2022-23- Calls' Results and Success Rate by Country

#Proposals, #Projects e Success Rate by Country

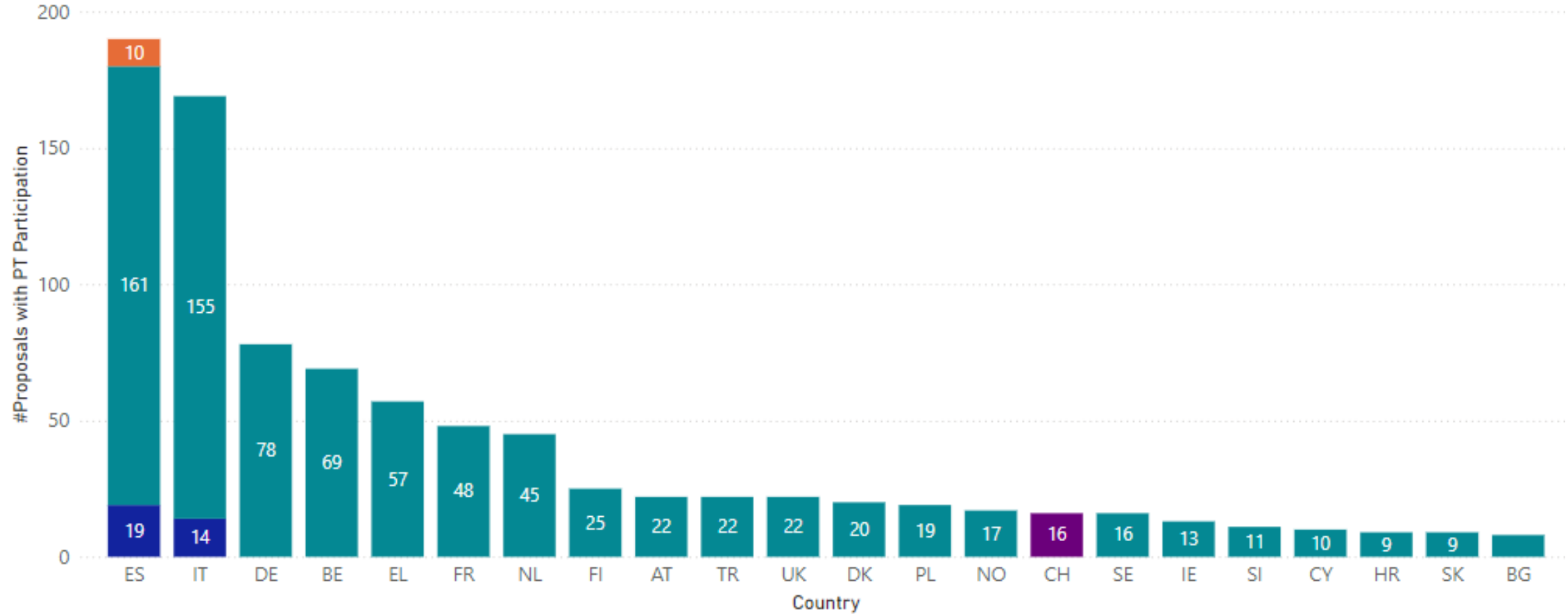
● #Proposals ● #Projects ● Success Rate



With whom does PT participate most in proposals

With whom does PT participate the most? #Proposals

Participant role ● Coordinator ● Participant ● Participant - AF ● Participant - AP

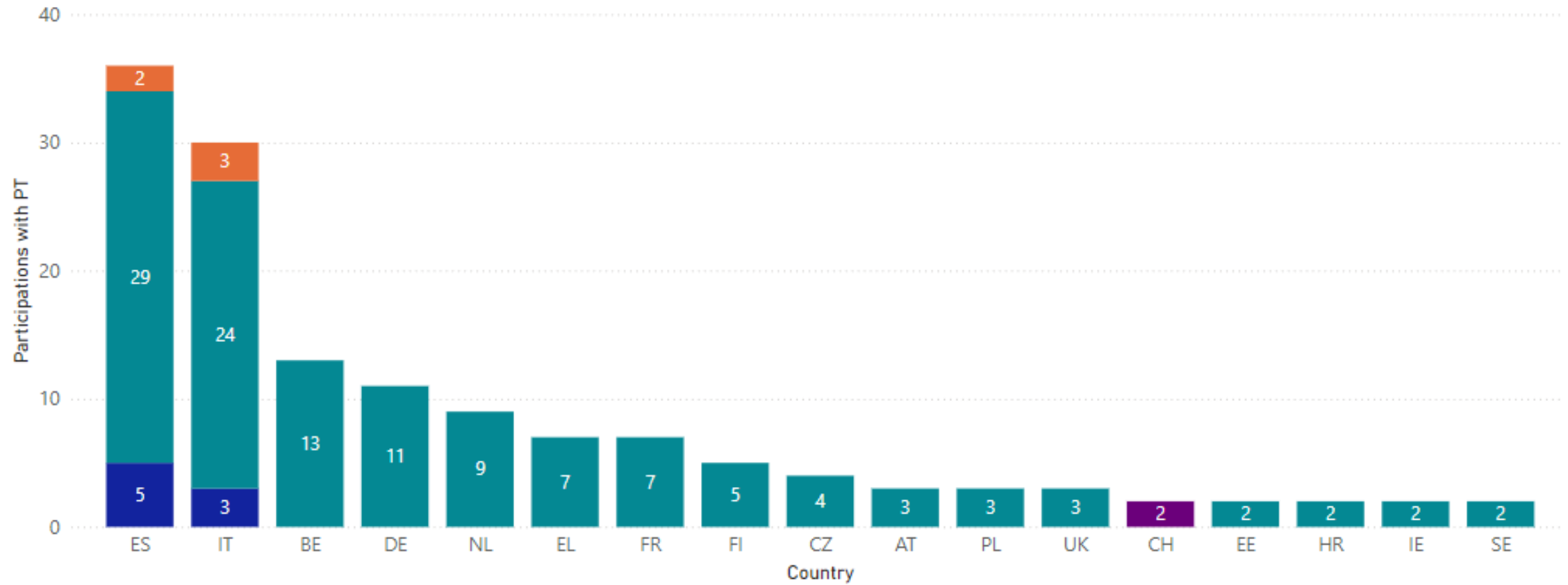


291
#Proposals

With whom does PT participate most in projects

With whom does PT participates the most? #Projects

Participant role ● Coordinator ● Participant ● Participant - AF ● Participant - AP



52

#Projects

CBE-JU National Representatives



- **PT representatives in CBE JU Advisory Boards**

States representatives' group



Country	Name	Last name	Main/Alternate	Organisation name
Portugal	Maria João	Fernandes	Main	MCTES/ANI (Ministry of Science, Technology and higher education / National Innovation Agency)
Portugal	Clara	Lopes	Alternate	MA/GPP (Ministry of Agriculture / Office of Planning, Policies and General Administration)
Portugal	José	Matos	Alternate	MA/INIAV (Ministry of Agriculture / National Institute of Agricultural and Veterinary Research)
Portugal	Bertilia	Valadas	Alternate	MAAC/SGA (Ministry of Environment and Climate Change /General Secretary)

HE CL6
NCP

Scientific Committee



Helena Vieira
Chair

Coordinator Researcher
and ERA Chair Holder

University of Aveiro, Department of
Environment and Planning/CESAM R&D
Center

Biography

<https://www.cbe.europa.eu/governance>

- **PT representatives in the Bio-based Industries Consortium (BIC)**



<https://biconsortium.eu/industrial-members>



Industry Members



- **PT representatives in the Bio-based Industries Consortium (BIC)**

CeNTI - Centre for Nanotechnology and Smart Materials 

Centre of Marine Sciences (Portugal) 

RAIZ – Forest and Paper Research Institute



<https://biconsortium.eu/associate-members>




Associate Members




Our team at ANI



Maria João Fernandes

 mariajoao.fernandes@ani.pt

 (351) 939 340 005

www.ani.pt

OBRIGADO

