



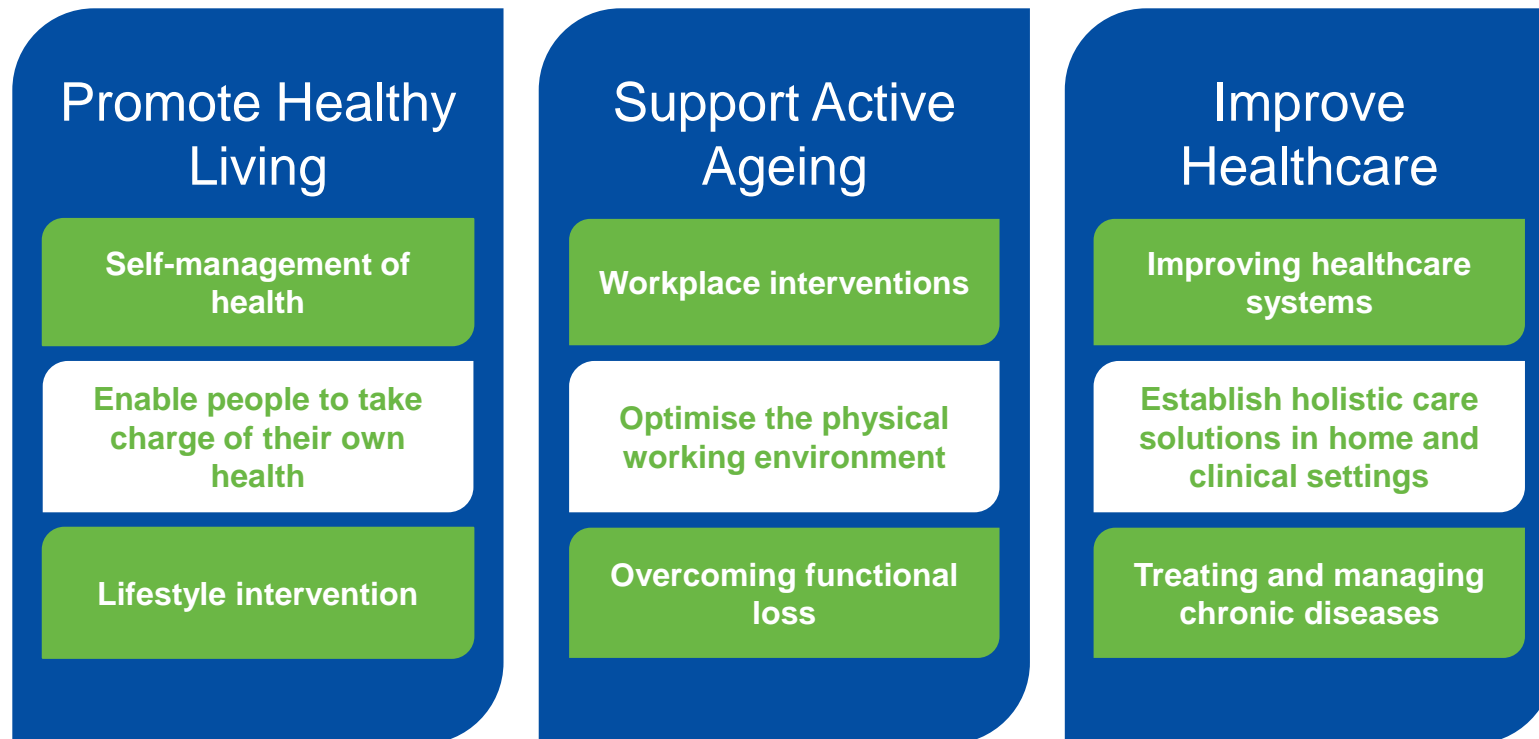
Participação Nacional e oportunidades nas Comunidades de Inovação e Conhecimento (KICs)

Jorge Figueira – João Malva-António Cunha



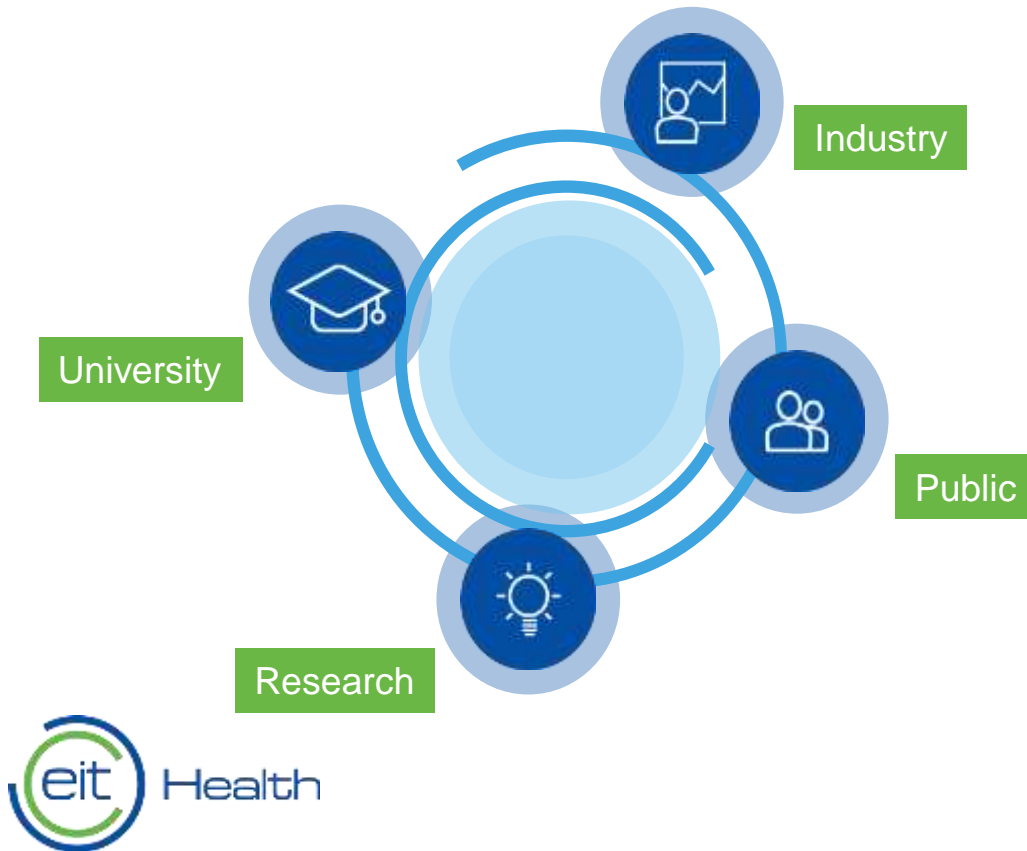
**Our mission:
EIT Health promotes entrepreneurship
and innovates in healthy living and
active ageing, with the aim to improve
quality of life and healthcare across
Europe.**

Connecting high potential areas with integrated innovation processes



EIT Health: leveraging the potential

One of the largest healthcare initiatives worldwide with more than **130 leading organisations**, covering all areas of healthcare.

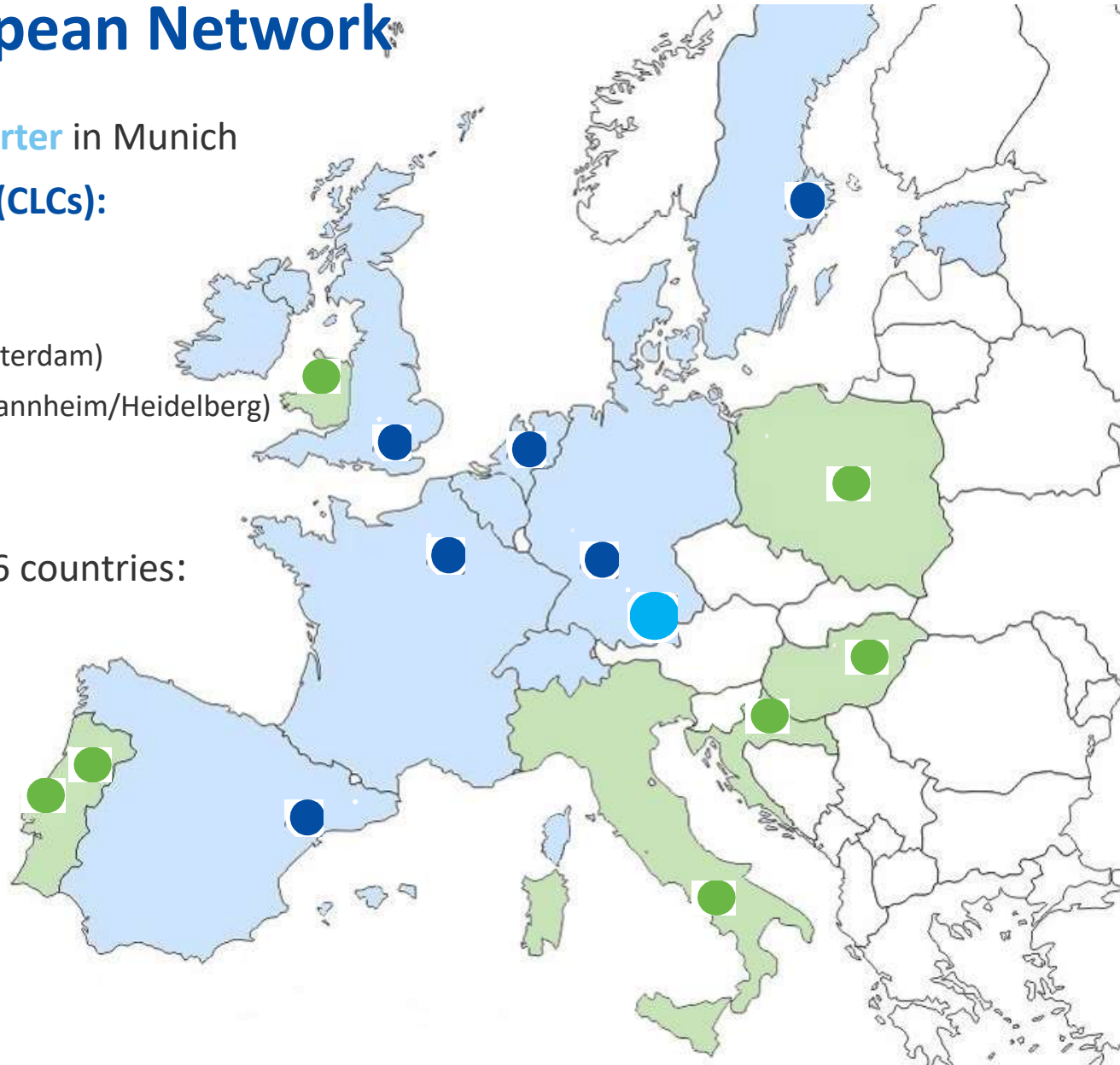


EIT Health

- invests in Europe's **best entrepreneurial talents and creative minds**
- fosters the development and commercialisation of **smart product and service solutions**

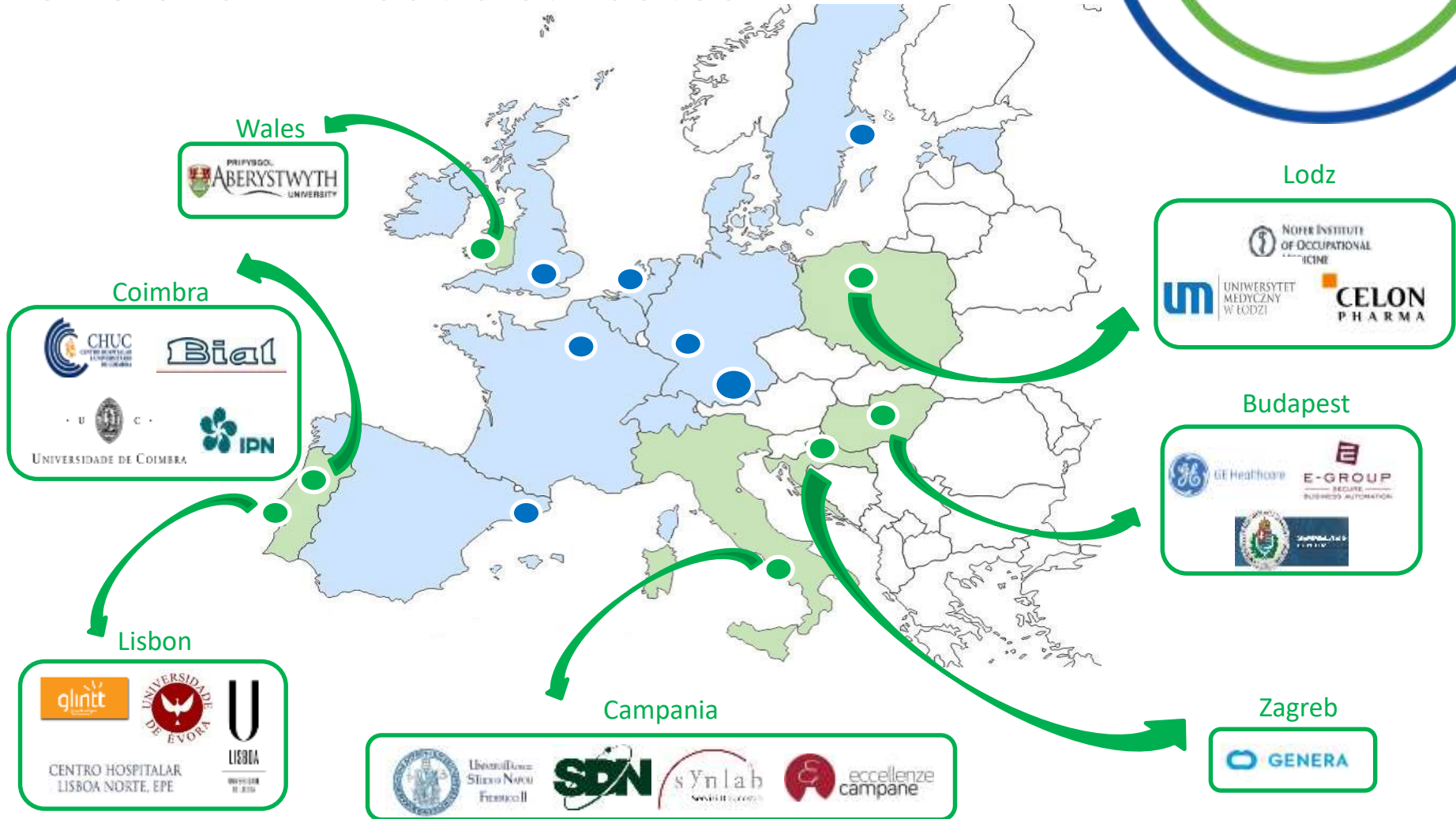
A Unique European Network

- **International Headquarter** in Munich
- **6 Co-Location Centres (CLCs):**
 - UK/Ireland (London)
 - Scandinavia (Stockholm)
 - Belgium/Netherlands (Rotterdam)
 - Germany /Switzerland (Mannheim/Heidelberg)
 - France (Paris)
 - Spain (Barcelona)
- **7 InnoStars regions** in 6 countries:



- Co-location centres
- InnoStars regions
- International HQ

Size of a CLC but distributed



Opportunity to increase the innovation capacity of your local subsidiaries



SIEMENS



Medtronic



Roche



GE imagination at work



novo nordisk



AIR LIQUIDE

Creative Oxygen



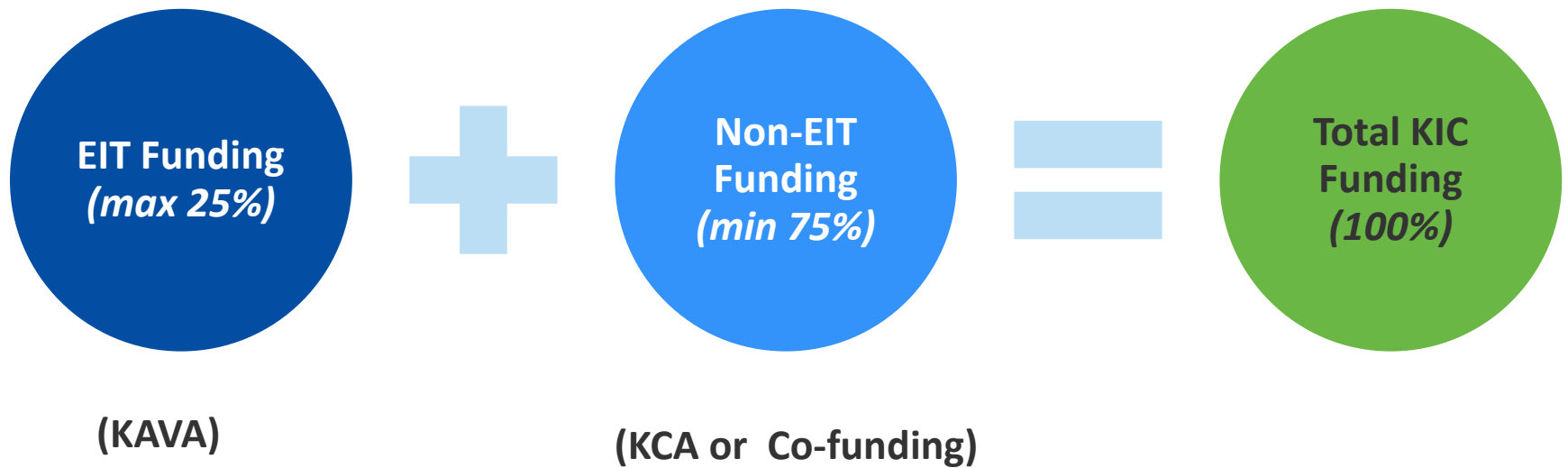
BD



Bayer

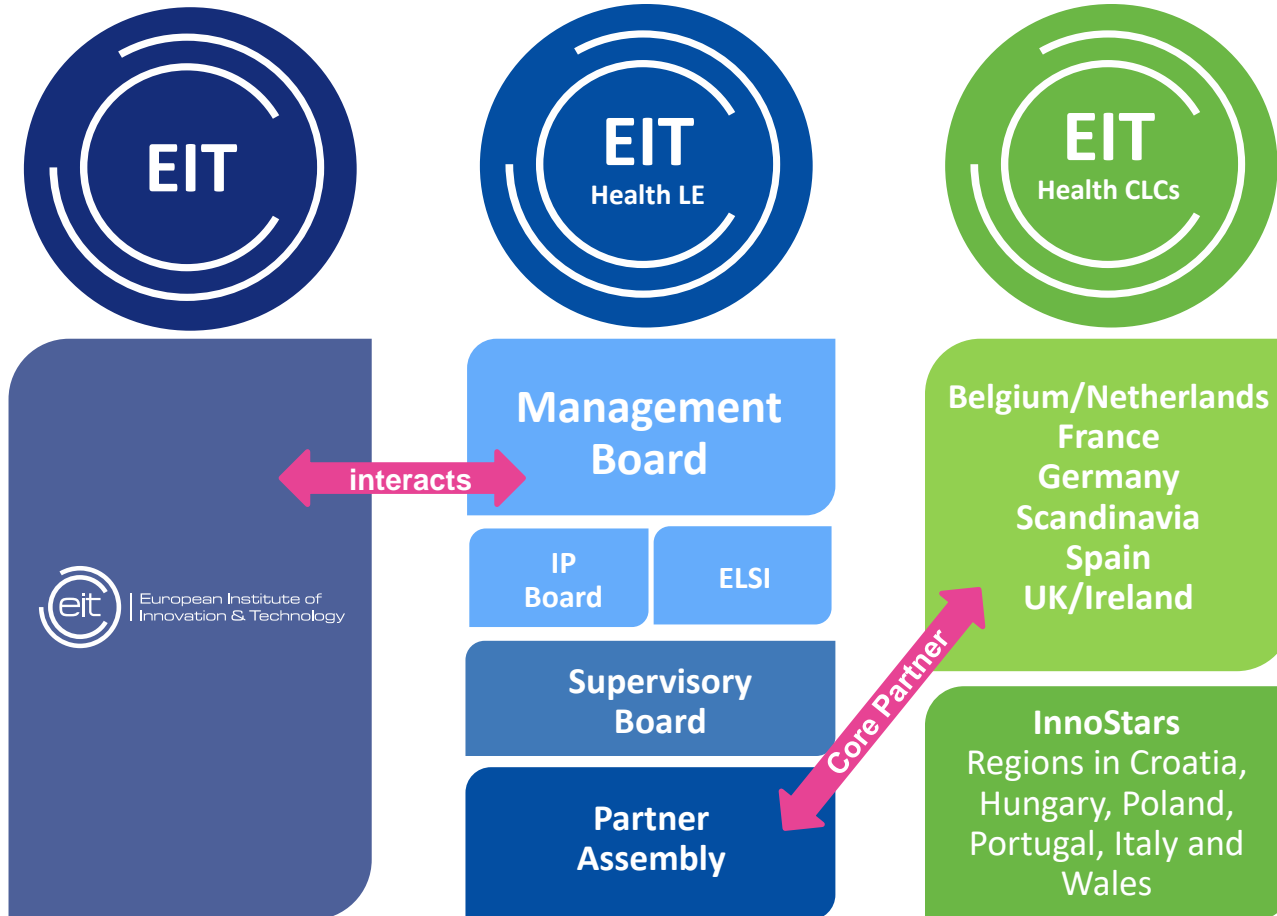
P&G

Leveraging and pooling resources



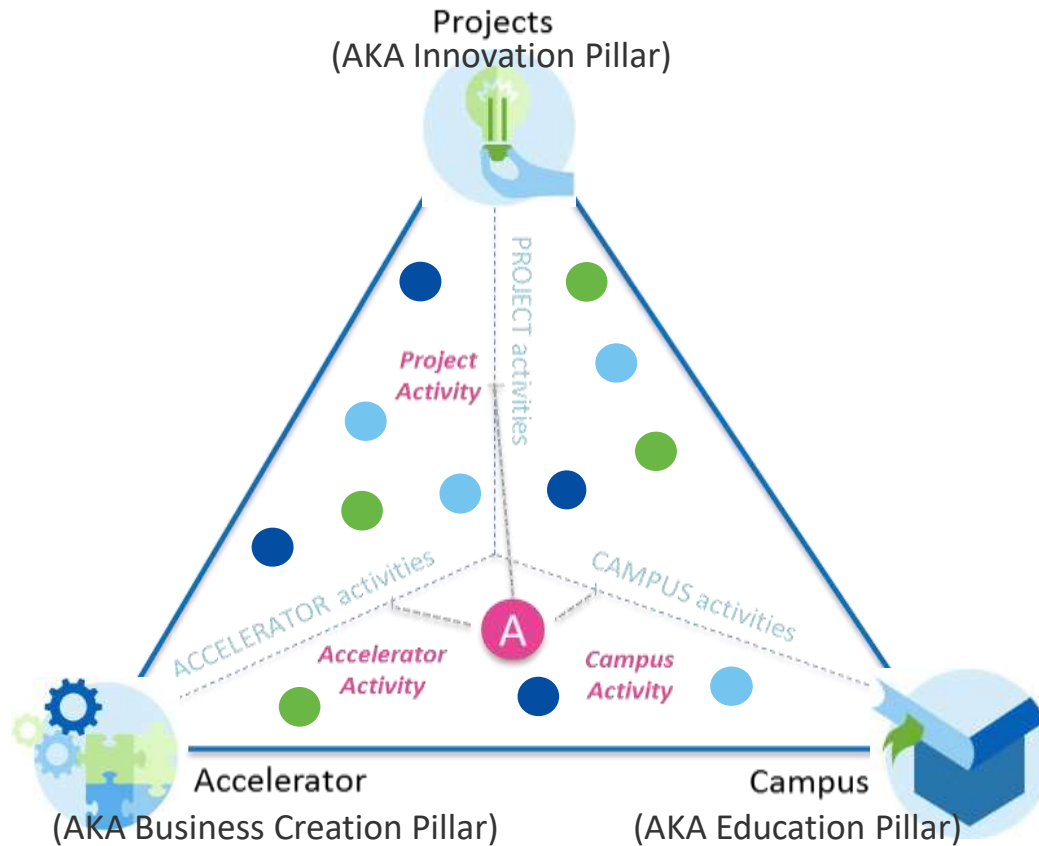
Membership fees:
Core partner: 75,000 EUR p.a.
Associate partner: 25,000 EUR p.a.

How EIT Health is organised



Integrating innovation, education and entrepreneurship

Integrated Activity Pyramid





Innovation Pillar

Innovation Projects



- Developing achievable products and services, linked to Accelerator
- Including educational elements of EIT Health Campus
- Focusing on activities with a clear added value for all healthcare challenges
- Developing disruptive solutions towards key challenges

Projects by Ideas “solution-driven”

- collaborative projects
- a potential solution has been identified that either capitalises on an opportunity or addresses a specific problem presented by demographic ageing of the population

Projects by Design “needs-driven”

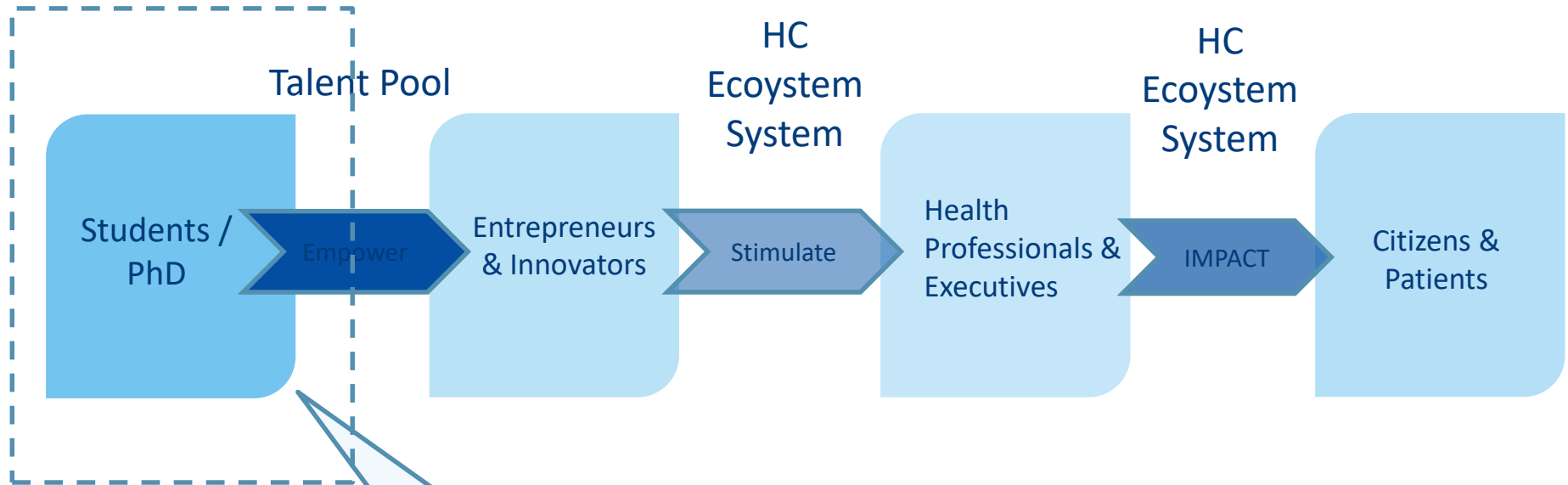
- start from a recognised market need or societal problem
- enable corporate and public non-academic partners to quickly initiate and execute activities
- aim at developing products and services hindered by specific innovation barriers



Campus (Education) Pillar



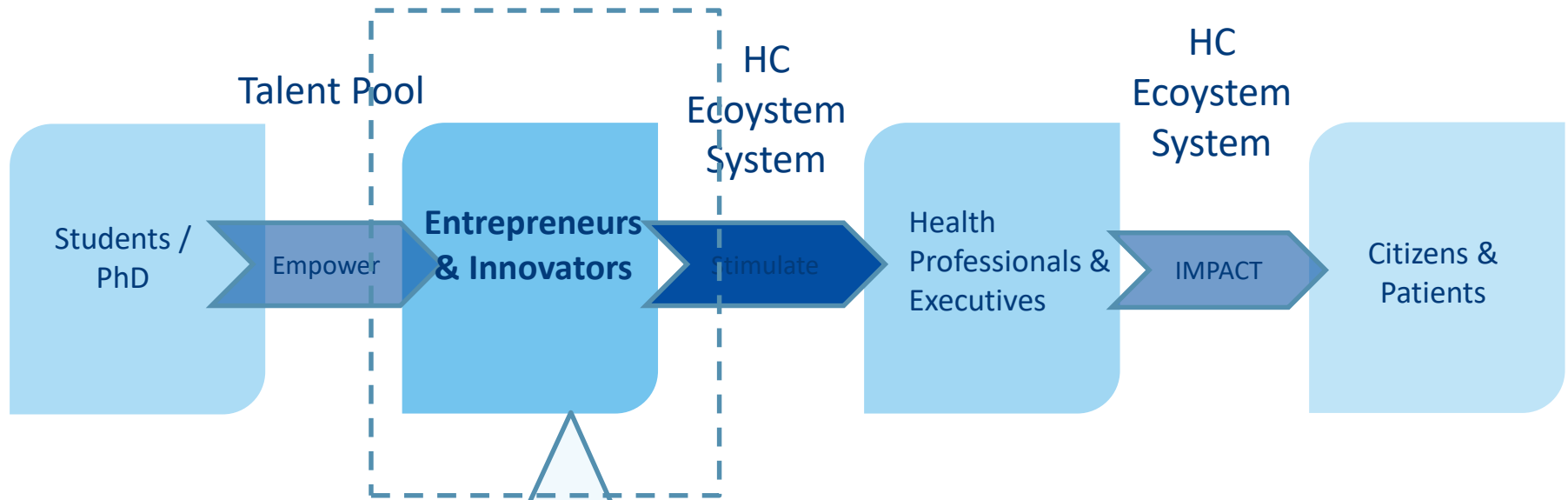
Creating opportunities for **students**



Participate in our **Innovation Days**, our **Summer Schools** or **Degree Programmes** to become equipped with basic **innovation skills** and become an **enthusiastic entrepreneur**.



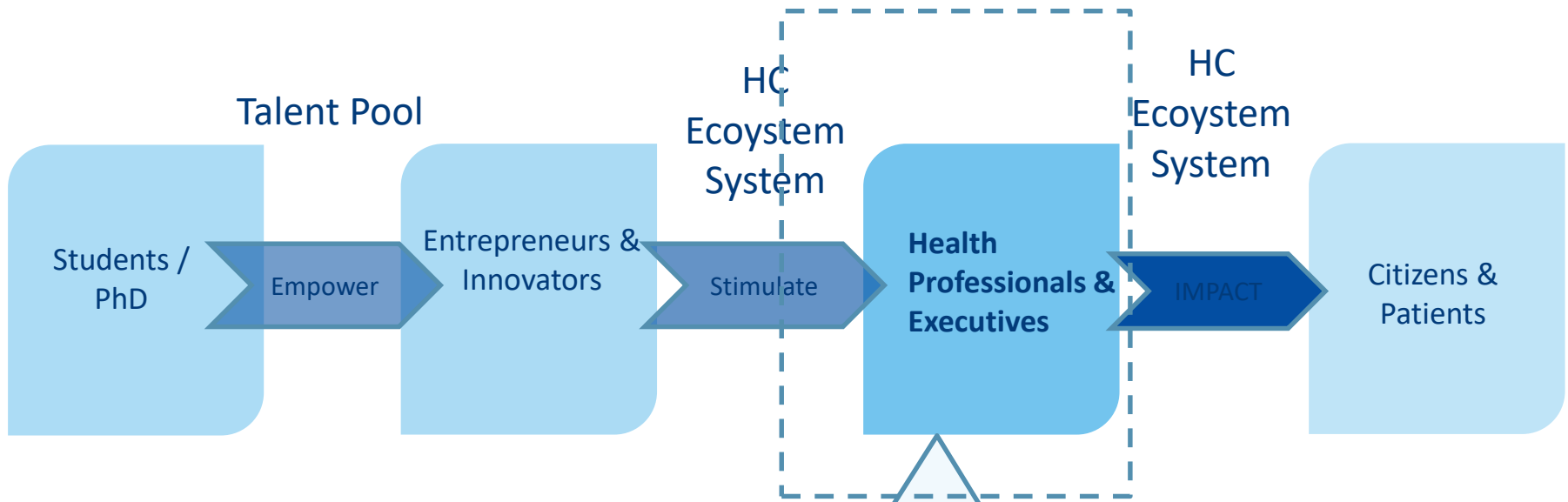
Creating Opportunities for (Student) Entrepreneurs and Innovators



*Explore your ideas in an **E-Lab**, or as an **Innovation Fellow**; *develop & experiment* with your ideas as an **PhD Transition Fellow** or launch your idea successfully with the help of our **courses for Entrepreneurs and Innovators** (e.g. on re-imbursement).*



Creating Opportunities for Health Professionals and Executives

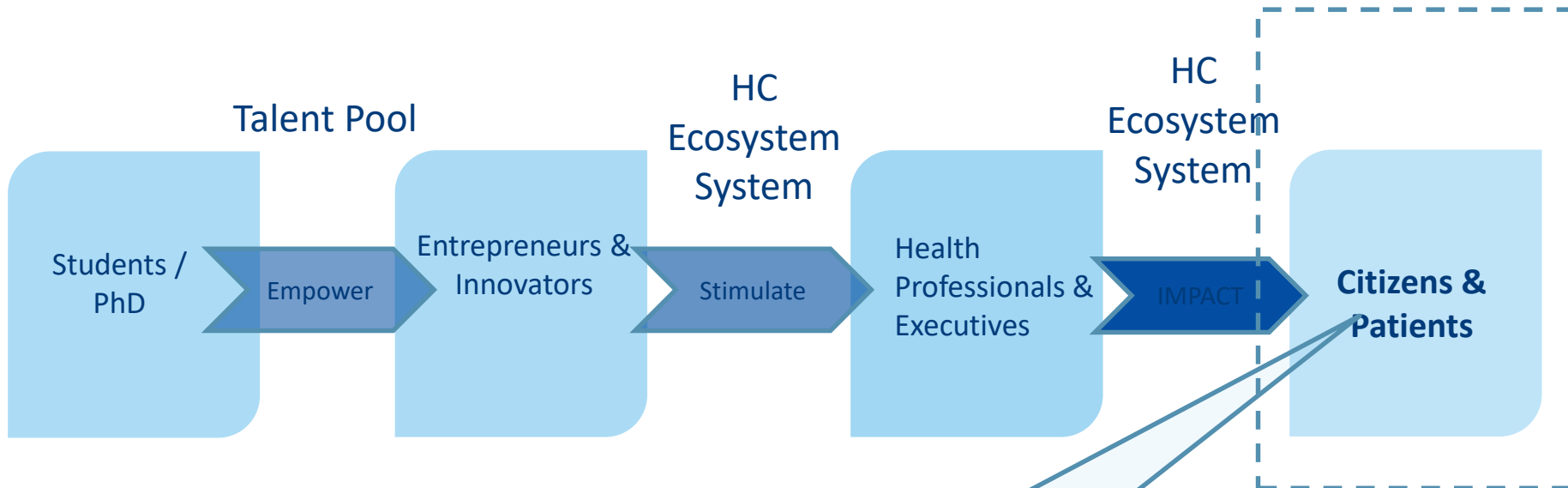


Take part in our short focus courses for **Health Executives**, or training for **Health Care Professionals** or Scientists to learn about the latest **Commercialization Strategies**.





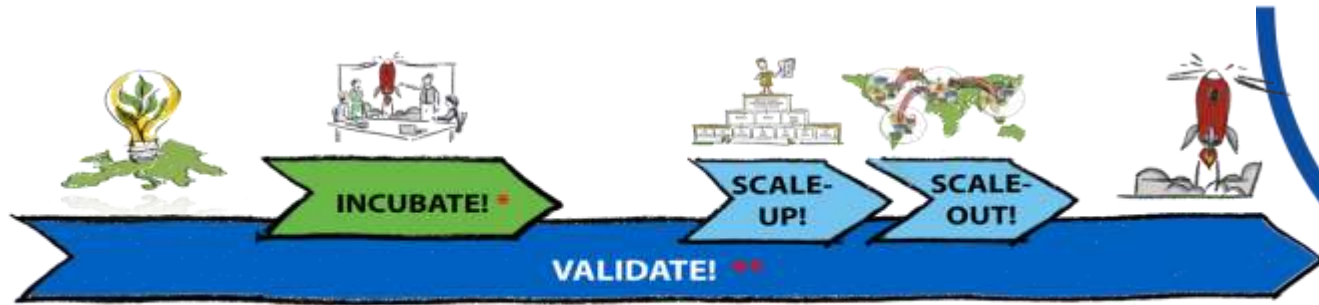
Creating Opportunities for Citizens & Patients



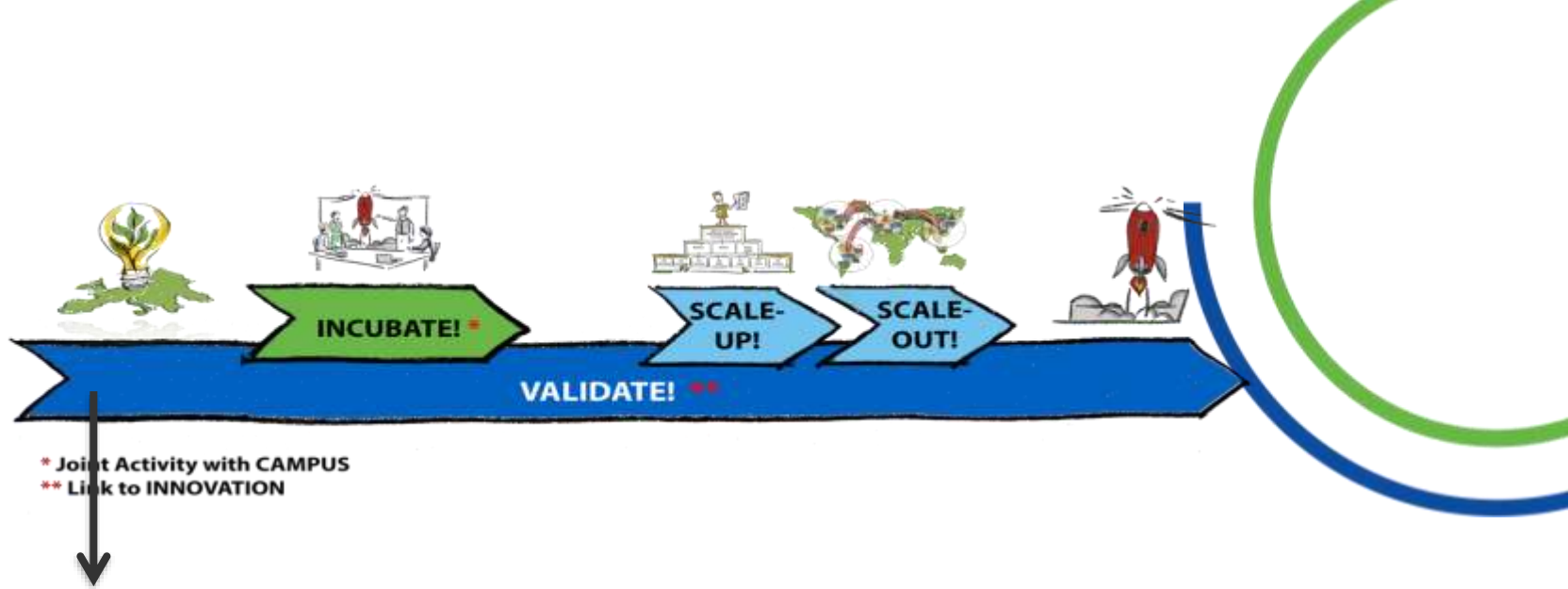
Participate in our **Citizens' Programme** or in one of our **MOOCs** to become a true health literate by getting the latest insight into prevention, e.g. how to manage your own health or how to get better insights of your health data.



Accelerator (Business Creation) Pillar



* Joint Activity with CAMPUS
** Link to INNOVATION

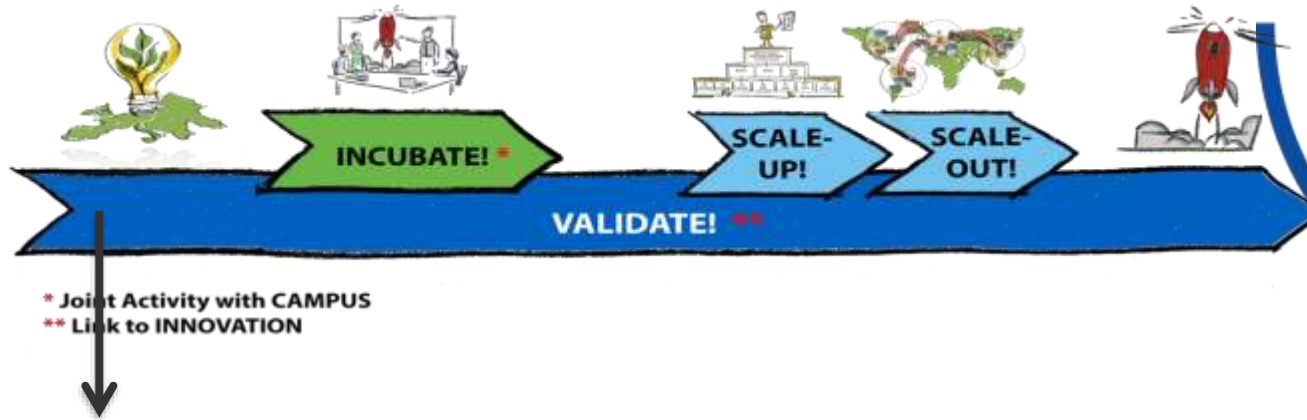


Living Labs & Test Beds: Involvement of Living Labs as key elements in the innovation process

Product/Market Fit: support services either to find the right European market to launch or scale their product, to test and validate their product on technical, clinical, economical level in a B2B, B2C context to European start-ups and scale-ups active in the health domain

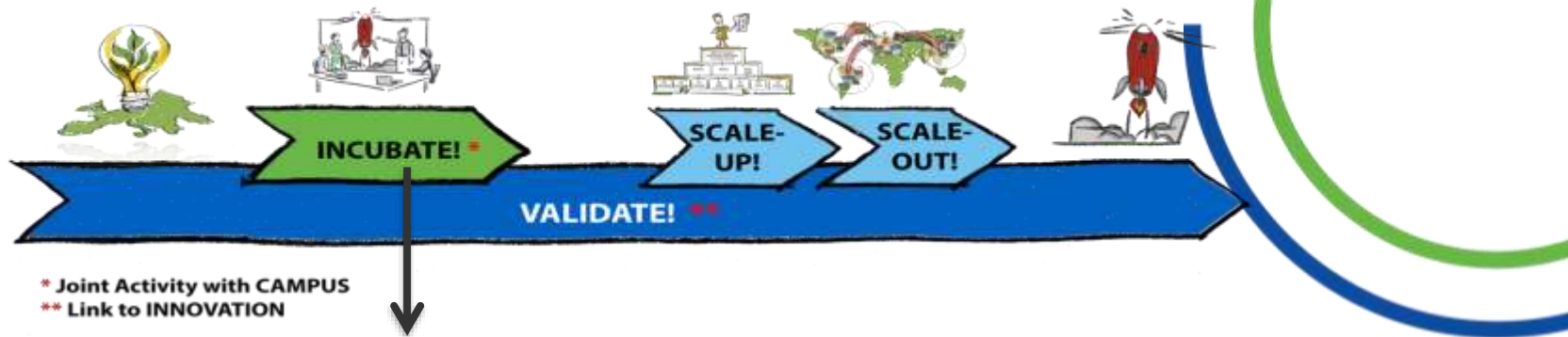
Market Coach Network: access to market expertise with a pan-European network of experts in all areas of EIT Health.

Point Lab: Data captured in large citizen and patient population that can be used to help specific business development questions of entrepreneurs.



EU Health MAPS: delivered through the Accelerator and Campus. The ACCELERATOR delivers basic information on the finance and reimbursement systems at all CLCs' countries and to make these data accessible via the VALIDATE! platform with explanation, map and experts contact data.

Fast Track for Start-Ups: Unique smart landing experience in France & Germany for the startups coming from the Validation & Scale packages (for 9 companies)



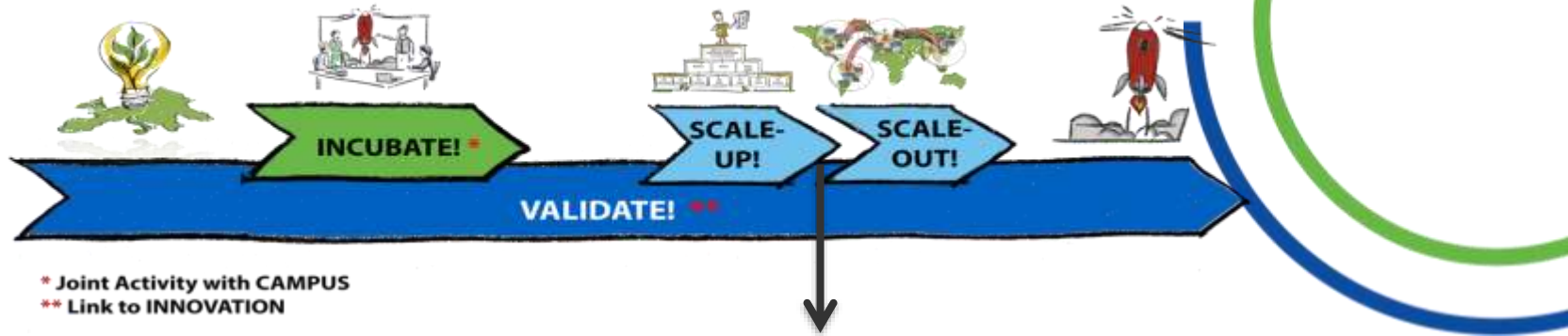
Intrapreneur: A 6-month programme to support intrapreneurs within large corporations to develop health-innovations both internally and in collaboration with start-ups in the Accelerator.

CaixaImpulse: acceleration programme that promotes the creation of new products and businesses in the areas of Medical and Health Sciences.

Launch-Lab: 2-month program for not-yet entrepreneurs from all over Europe to explore the opportunities of their health tech idear

Venture-Lab: helping companies to design, refine and validate their business model and communicate it effectively to strategic partners and investors (more focused in integration with lab/education)

Local Training: Mentoring workshops that will bring together entrepreneurs, start-ups, SMEs and intrapreneurs as well as investors keen to learn about opportunities in the healthy living and active ageing fields.

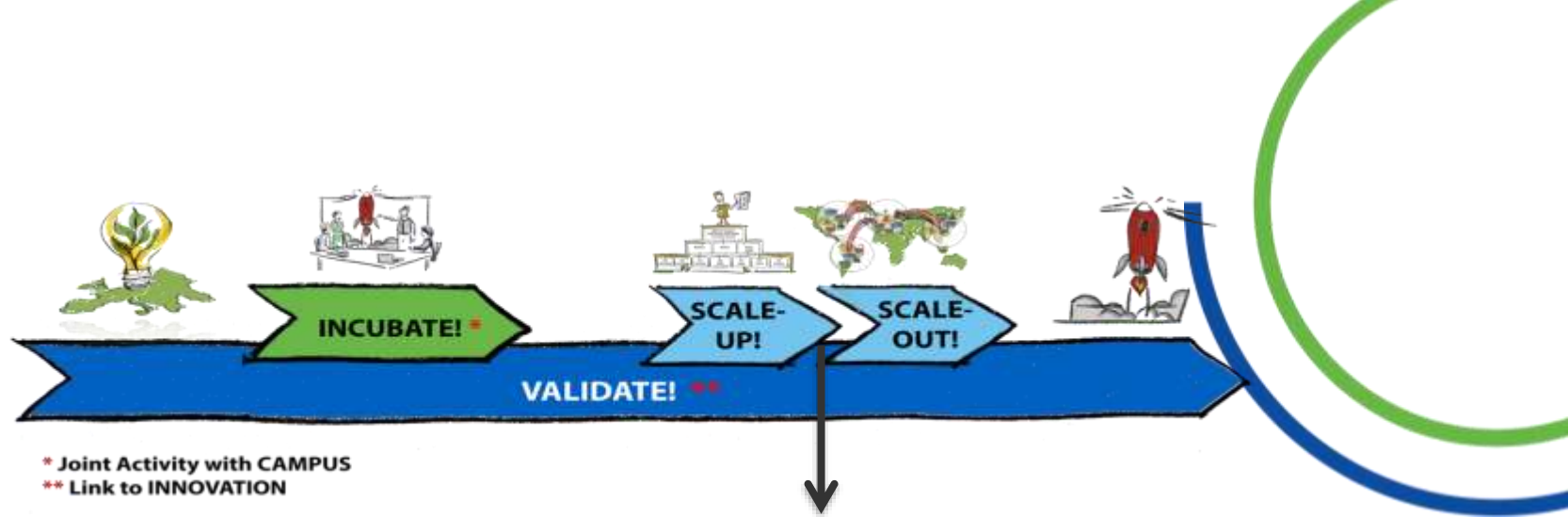


Business Plan Competition: Award the best of the best business concepts out of EIT Health innovation ecosystem.

Investor's Network: Provide access to financing and coaching in a systematic approach

PoC/HS Projects: funding for enabling companies to take the next step with their innovation, accelerate market entry and create new economic activity

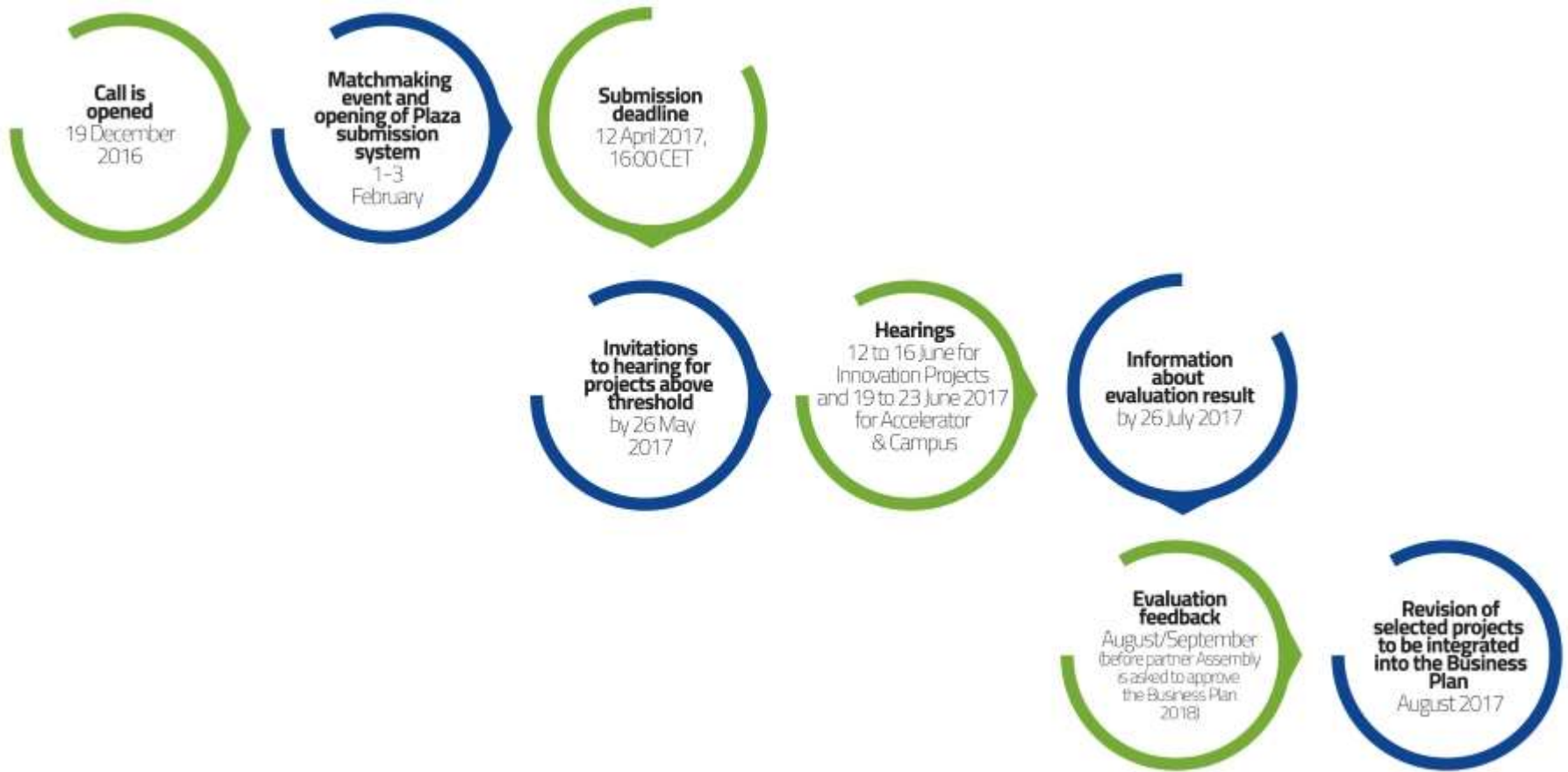
Crowdfunding: design, build, and operate a European EIT Health Crowdfunding Platform t



GLOBHEALTH: Global Entrepreneur and Investor Forum helps to increase the investment of private capital in start-ups, SMEs and scal-ups.

MedTech Excelerator: 12 late-stage startups and SMEs from Europe an accelerator experience in the US, China or Brazil.

GoGlobal: The EIT Health Go Global internationalisation programmes will support European start-ups and scale-ups in the EIT Health focus areas to expand in Europe, the United States, and other international markets.



Criteria applied for the remote expert evaluation (STAGE 1)

- Project excellence and strategic fit (25%)
- Feasibility and potential (25%)
- Implementation and adoption pathway (25%)
- Project Impact (25%)

Criteria applied for the hearings (STAGE 2)

- Project excellence and strategic Fit (15%)
- Feasibility and potential (15%)
- Implementation and adoption pathway (15%)
- Project impact (15%)
- Knowledge triangle integration (15%)
- Strength of team and collaboration (15%)
- Commitment of partners (10%)



Selection criteria

The criteria applied for the selection of proposals by the SB for EIT contribution are:

- The total score.
- The budget available (Proposals per call are ranked and based on score and available budget; a cut-off point is defined).
- The maximum total EIT contribution for an EIT Health Associate Partner is €250.000/year. This will be enforced at the selection stage.

Innostars Contacts

- E-Mail: innostars@eithealth.eu
- Phone: +36 30 791 49 02
- <http://eithealth.eu/clc/eit-health-innostars/>

Director:



Balázs Fürjes
Managing Director
E: balazs.furjes@eithealth.eu



EIT Health – a powerful alliance



Thanks

Jorge Figueira

João Malva

António Cunha