



#InvestEUresearch

Horizon 2020 Work Programme for Research & Innovation 2018-2020

Spreading Excellence and Widening Participation

Telemachos TELEMACHOU
Policy Officer
DG RTD - Unit B.5

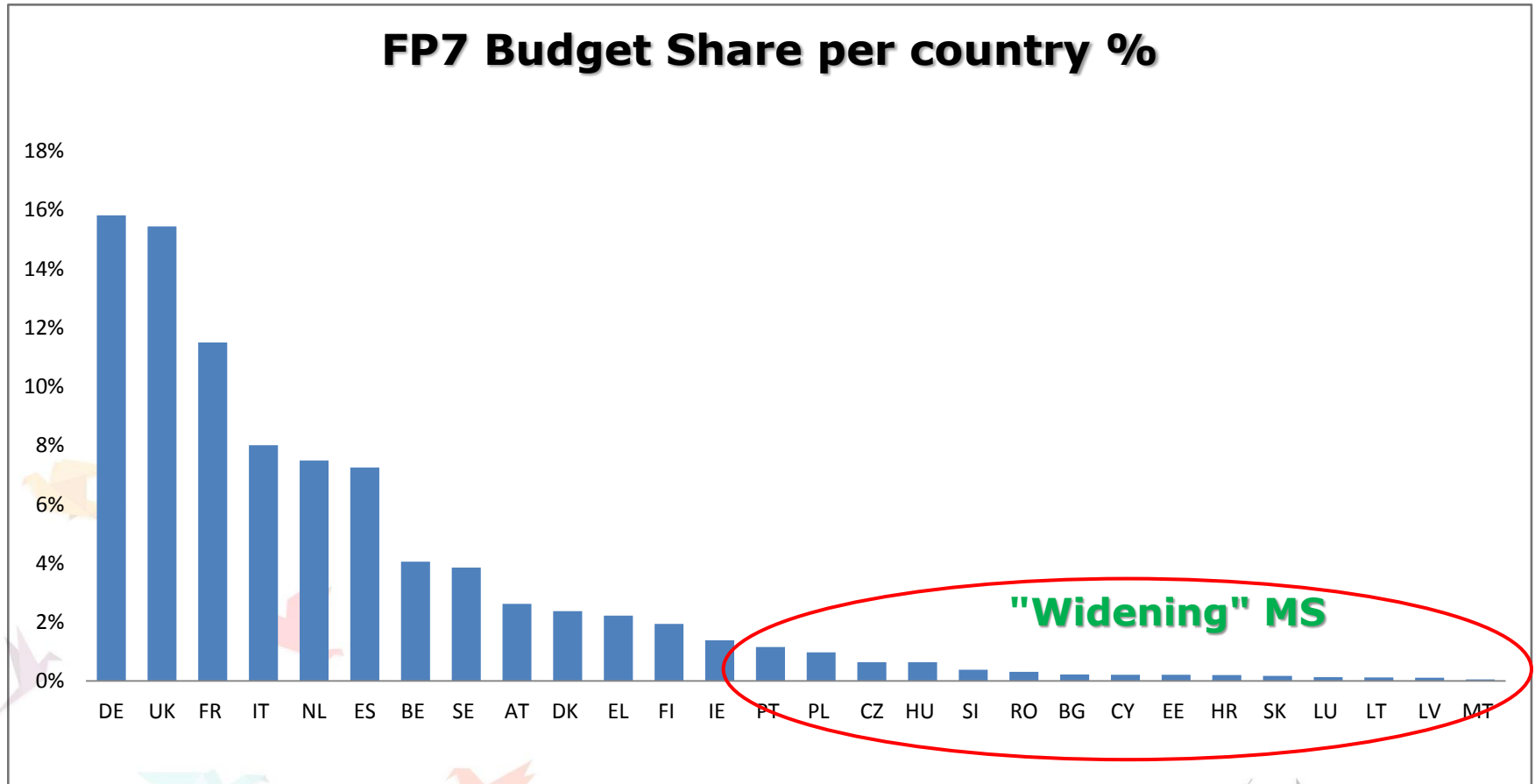
Research and
Innovation

Background

- Disparities in research and innovation performance: barrier to competitiveness, growth and jobs across Europe
- Some countries experience low participation in the EU Framework Programmes because of:
 - insufficient national R&D investments
 - lack of synergies between national research systems and the EU research landscape
 - system learning effects
 - reduced access to international networks
 - problems with information, communication and training

FP7 country participation

FP7 Budget Share per country %



The Widening Package under H2020

Measures in Horizon 2020 under **Spreading Excellence and Widening Participation**:

- Teaming (institution building)
- Twinning (institutional networking)
- ERA Chairs (bringing excellence to institutions)
- NCPs (information, communication, support)
- Policy Support Facility (support for R&I Policy design)
- COST (stimulating cross border science networks)

Total Budget in H2020 ~ **€ 900 million**



European
Commission

Specific eligibility criteria for WIDENING

- Particular political objectives of WIDENING in H2020
- Necessitate a targeted approach to help those participants with low performance in R&I
- H2020 legal text >>"low performing RDI Member States and regions"

Eligibility Criterion: **The Composite Indicator of Research Excellence**

➤ Threshold: MS below 70% of the EU average

"Low RDI Performing" or "Widening" Countries:

MS: Bulgaria, Croatia, Cyprus, Czech Republic, Estonia, Hungary, Latvia, Lithuania, Luxembourg, Malta, Poland, Portugal, Romania, Slovakia and Slovenia

AC: Albania, Armenia, Bosnia and Herzegovina, Faroe Islands, Former Yugoslav Republic of Macedonia, Georgia, Moldova, Montenegro, Serbia, Tunisia, Turkey and Ukraine

Teaming in H2020

Objective:

- Creation of new (or significant upgrade of existing) Centres of Excellence (CoE) in low R&I performing or "Widening" countries

The Partnership: 2 parties in each Teaming project

- (1) the COORDINATOR from the "Widening" country
- (2) an institution with an international reputation in R&I excellence (from all EU28 or AC)

➤ Implementation in 2 Phases

Teaming: Scheme Design

Phase 1: Funding the development of a **Business Plan** for the new/upgraded Centre of Excellence facilitated by a teaming process with a leading counterpart in Europe.

Phase 2: Subject to the quality of the proposal for Phase 2, and the financial commitment for the project from other sources, the Commission may provide **substantial financial support** (max. €15 million) for the **first steps of implementation** (5-7 years) of the Centre covering administrative, personnel and operational costs as well as "minor" support for equipment and consumables.

NOTE: There are no new Teaming calls in H2020. For the ongoing Teaming Phase 2 (restricted) call no information can be provided. Applicants involved in that competition can contact their Project Officer in the REA for further information.

Impact of Teaming

The **creation of CoEs** in "Widening" Countries through Teaming is expected to:

- increase the scientific capabilities of these countries and enable them to engage in a **strategic growth path** pointing to long-term opportunities for economic development.
- through improved scientific capabilities allow these countries to improve their chances to **seek competitive funding** in EU and international fora.
- create critical mass through **complementary funding** from other sources (e.g ESIF) also committing national/regional authorities to ensure greater impact and project success.

Twinning: Aim, Objectives & Partnership

Aim of the action:

Strengthen a **defined field of research** in a university or research organisation from a Widening country by linking it with at least two internationally-leading research institutions in other Member States or Associated Countries.

Main objectives:

- Enhance the **S&T capacity** of the institutions- Focus on institution in Widening country
- Raise the research profile of the **institution and** of its research **staff**

The Partners: (Minimum Conditions)

- **ONE** institution located in a "Widening" MS/AC (**COORDINATOR**)
- A **minimum of TWO** additional partners from two different MS or AC other than the country of the coordinator.

Twinning: Proposal Design & Activities

Proposals:

- Scientific **strategy for excellence and innovation** with proposed formulation of joint new/ongoing research project(s) in a defined area of research ;
- Outline the scientific qualities of the **partners**;
- Focus on promoting early stage researchers (dedicated Work Package).

Activities supported:

- Short term staff exchanges; expert visits and short-term training; workshops; conference attendance; dissemination, networking and outreach activities.

Infrastructure, equipment & research costs (except for training) will **NOT** be funded.

Twinning: Impact & Call details

Expected Impact:

- Research **excellence**, in particular, in the selected field of research;
- Improved capability to succeed in competitive **research funding**;
- Enhanced reputation, **attractiveness** and networking;
- The expected potential impact of the project illustrated by a number of **indicators**;
- Benefit from/to "**advanced**" **partners** to be demonstrated.

Twinning Call 2018:

Budget: €30 million

Call publication: 27 October 2017

Call opening: 15 May 2017

Call deadline: 15 November 2018

Project Size: up to €0.8 million (eligibility condition)

Project Duration: up to 3 years (eligibility condition)

Implementation: Coordination and Support Action

(Last Twinning call with deadline in Nov 2019)

Twinning Lessons learned (1)

Some points learned from the Interim Evaluation:

- + The establishment of the Twinning **collaborations** was highlighted as the most important result achieved so far.
- + The institution's capabilities in networking and competing for **international funding** have been increased.
- The project coordinators find that **research costs** need to be covered.
- Some of the Twinning institutions are managing for the **first time a large EU project** and the extent of this challenge was not expected.

Twinning Lessons learned (2)

Lessons learned for future calls:

- Clear definition of the **scientific strategy** towards excellence in the relevant research field;
- Better illustration of the scientific qualities of "**advanced**" **partners** and their added value to the project;
- Outline the expected impact of the twinning exercise on the institution in the Widening country (and even at the national/regional level) based on **specific indicators**.



ERA Chairs - Objectives

Objectives of the action:

- Create the appropriate conditions and bring high quality researchers and managers (**the ERA Chair and his/her team**) to universities and other research organisations with the potential for research excellence.
- Institutions should implement structural changes to achieve excellence on a sustainable basis.

Participants

- One single applicant (mono-beneficiary action) located in a Widening country.

ERA Chairs: Proposal Design & Impact

Proposals:

- Bottom-up approach in the field of research but connected with the ERA Chair holder expertise to fully capitalise on his/her presence;
- Measures to foster structural changes for excellence including compliance with ERA priorities (open recruitment, peer review, gender balance, Charter & Code);
- Include a plan to increase Research Capacity - if infrastructures foreseen present a strategy for funding (including possible use of ESIF funding).

Expected Impact:

- Increased attractiveness of institution and region for excellent researchers;
- Research excellence in the fields covered by the ERA Chair;
- Improved capability of the institution to succeed in competitive research funding;
- Institutional changes with increased research capacity and ERA priorities compliance.



ERA Chairs: The ERA Chair holder

- The ERA Chair should be an outstanding researcher and research manager with a proven record of leadership and must match the profile of "Established" (R3) or "Leading"(R4) Researcher as per the E. Framework for Res. Careers;
- The ERA Chair appointment must follow an open and merit-based recruitment process - to be subjected to monitoring by the European Commission;
- ERA Chair holder must be appointed in a full time position;
- The institution should ensure commitment and the necessary autonomy towards the ERA Chair (e.g. a professor position within the institution and clarity on remuneration through a letter from the head) ;
- ERA Chairs can be of any nationality;



ERA Chairs: Costs & Call 2017 details

Eligible Costs:

- Salaries of ERA Chairs and his/her team.
- Contribution towards measures aimed at facilitating structural changes at the institution:
 - ERA priorities;
 - Costs including training, meetings, publication and patenting costs, (minor part of budget for equipment);
- The grant will not cover infrastructure costs.

ERA Chairs Call 2018:

Budget: €30 million

Call publication: 27 October 2017

Call opening: 26 July 2018

Call deadline: 15 November 2018

Project Size: up to €2.5 million (eligibility condition)

Project Duration: up to 5 years (eligibility condition)

Implementation: Coordination and Support Action

(Last ERA Chair call with deadline in Nov 2019)



European
Commission

ERA Chairs lessons learned

Lessons learned for future calls:

- Clearly define objectives towards **institutional changes**
- Demonstrate the role and **autonomy** of the ERA Chair holder
- Work Packages should be consistent and contribute to an **overall Action Plan**
- Management structures need to be **well defined** and **simple**.



Widening Fellowships (WF)

What is it?

Specific support to researchers of any nationality to undertake their fellowship in a Widening Country

Mechanism:

- First step: Regular MSCA IF call & evaluation and selection of IF Fellows
- Proposals above quality threshold but not retained for funding through the MSCA IF call with beneficiaries in widening countries automatically re-assigned to the WF call
- Proposals then selected following the ranked list of the WF until exhaustion of budget

Widening Fellowships Calls

Year	Call opens	Call closes	Budget
2018	12/04/2018	12/09/2018	5 mEUR
2019*	11/04/2019	11/09/2019	6 mEUR
2020*	08/04/2020	09/09/2020	7 mEUR

*** Dates to be confirmed**

Portugal's Participation to WIDESPREAD

Teaming Phase 1 2014: 9 participations – 4 successful

Teaming Phase 2 2016: 4 participations – 1 successful

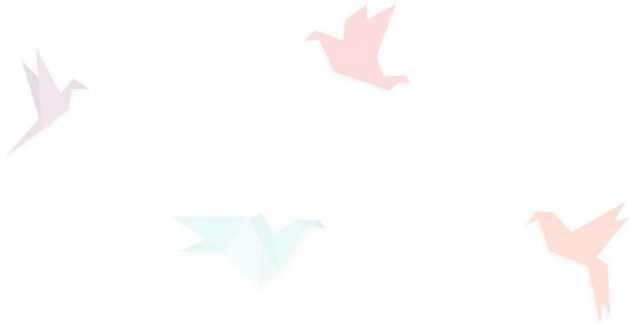
Teaming Phase 1 2017: 12 participations – 2 successful

Twinning 2015 call: 78 participations – 11 successful

Twinning 2017 call: 64 participations – 8 successful

ERA Chairs 2014: 13 participations – 4 successful

ERA Chairs 2017: 13 participations – 1 successful



Thank you!

#InvestEUresearch

www.ec.europa.eu/research

Participant Portal

<http://ec.europa.eu/research/participants/portal/desktop/en/opportunities/index.html>