



PORTO 4 AGEING



European Innovation  
Partnership on Active  
and Healthy Ageing  
PARTNER PLUS



EIP ON AHA

REFERENCE SITE



# EIT-Health: an opportunity for Oporto University

Elísio Costa

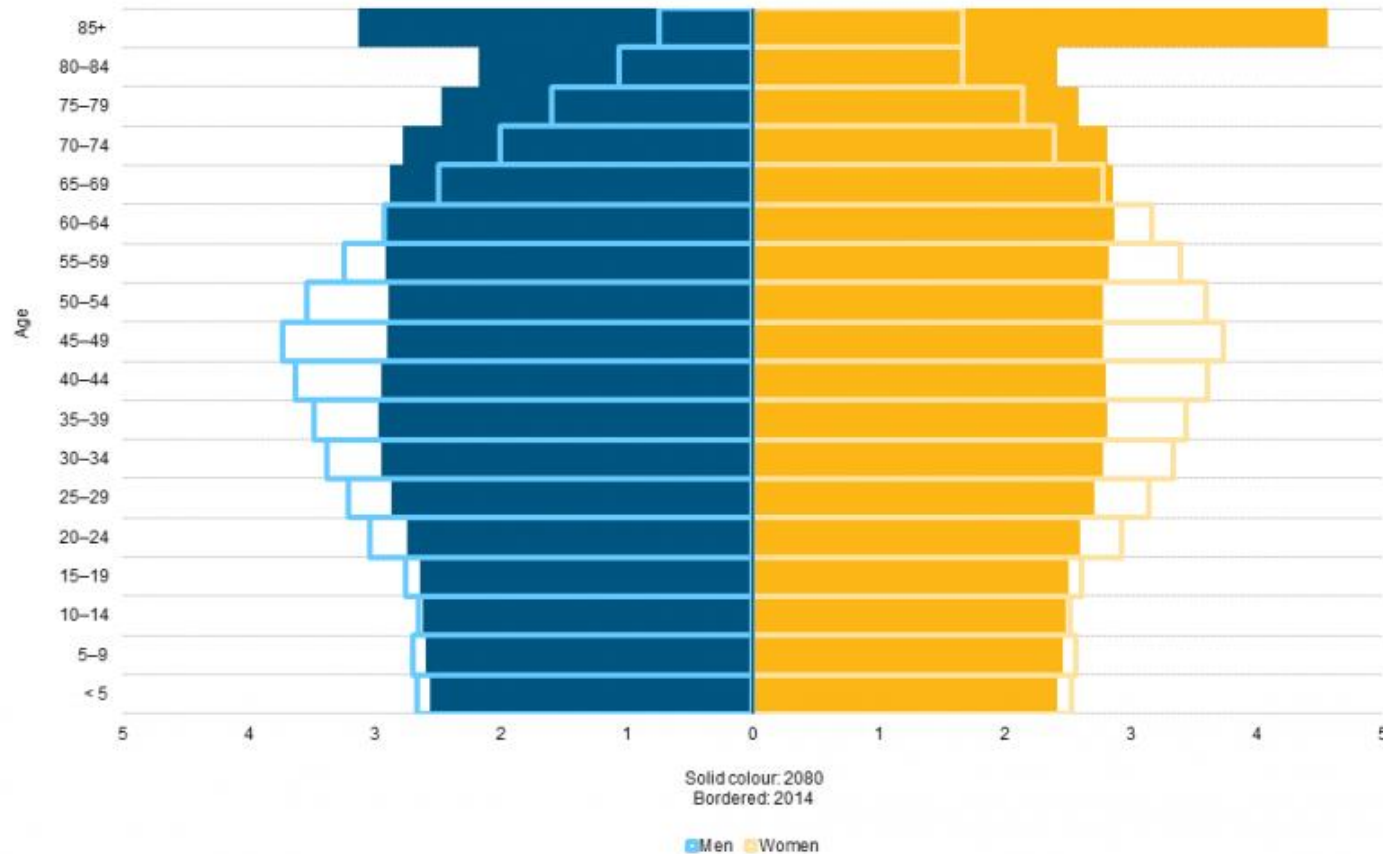
UCIBIO, REQUIMTE, Faculty of Pharmacy

Porto4ageing EIP on AHA *Reference Site*

University of Porto



# Europe is facing a demographic challenge



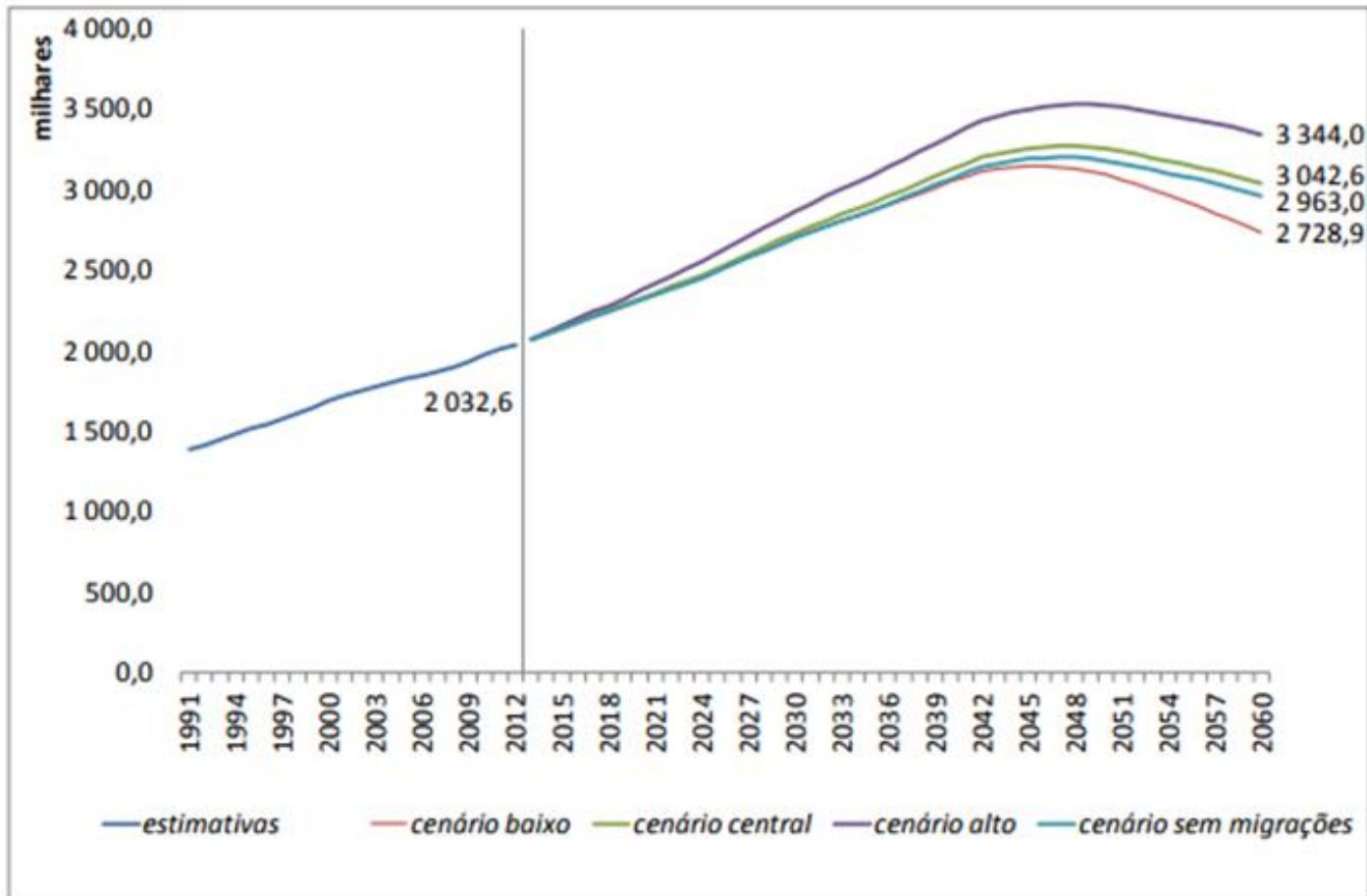
2014

2080

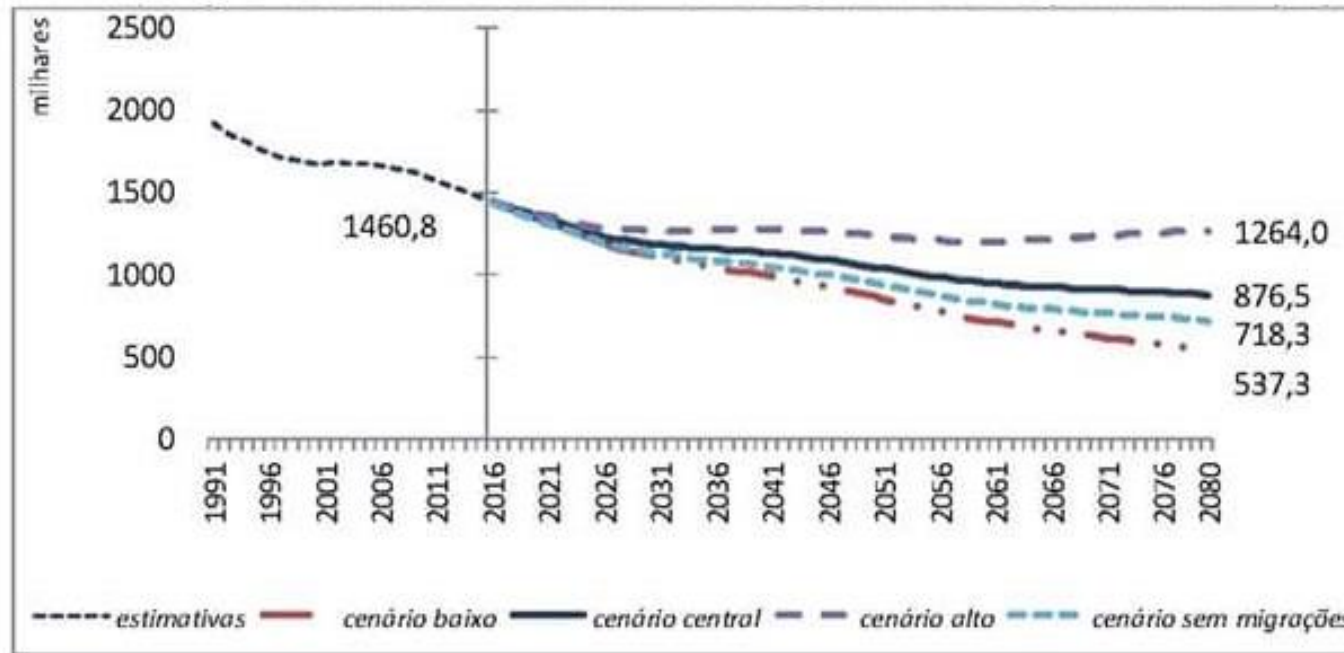
(\*) 2080: projections (EUROPOP2013).

Eurostat projections for EU Member States highlights the marked increase in the share of the population in the older age ranges, from 65 to 79 years, and the over-80s.

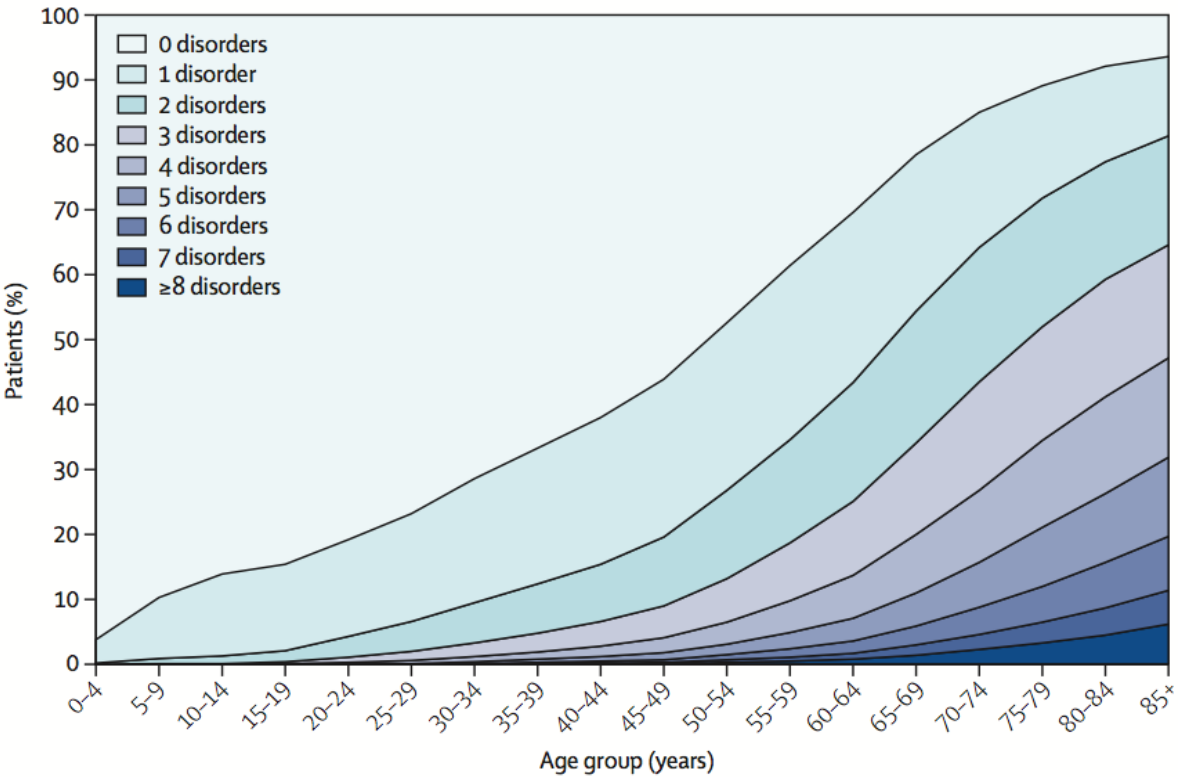
# Population living in Portugal with 65 years old or more, 1991-2060 (estimates and projections)



# Population living in Portugal with 0 to 14 years old, 1991-2080 (estimates and projections)



# Number of chronic conditions by age group



**Chronic conditions**

**Lack of health professionals**

**Financial challenges**

**Health inequalities**



# From challenge to answer

## From Societal challenge

## To Major Opportunity



### Dependency Ratio

From 1:4 to 1:2

80+ doubles by 2025



### Empowerment

Active Ageing

### Cost of Care

GDP by 2025 Cost of Care



### New Care Models

Home based

Integrated care

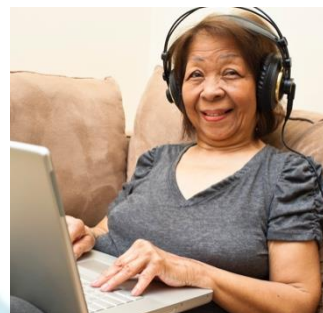
Large Efficiency gains



### Human Resources

Shrinking work force

Lacking 20 million carers by 2020



### Growth and Markets

3000 B€ wealth

85 Million Consumers

– and growing

# Key European Commission initiatives on AHA



## Knowledge and Innovation Communities (KICs)

The EIT's KICs (Innovation Communities) are partnerships that bring together **businesses, research centres and universities**. They allow:

- innovative products and services to be developed in every area imaginable, including climate change, healthy living and active ageing
- new companies to be started
- a new generation of entrepreneurs to be trained

### 2010

- EIT Climate-KIC: addressing climate change mitigation and adaptation
- EIT Digital: addressing Information and Communication Technologies
- EIT InnoEnergy: addressing sustainable energy

### 2014

- EIT Health: addressing healthy living and active aging
- EIT Raw Materials: addressing sustainable exploration, extraction, processing, recycling and substitution

### 2016

- EIT Food: addressing sustainable supply chains from resources to consumers

### 2018 - the EIT has launched a call for two new Innovation Communities

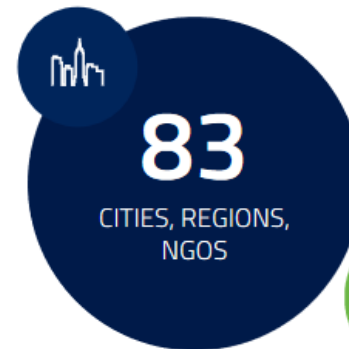
- EIT Urban Mobility ?
- EIT Added-value Manufacturing ?



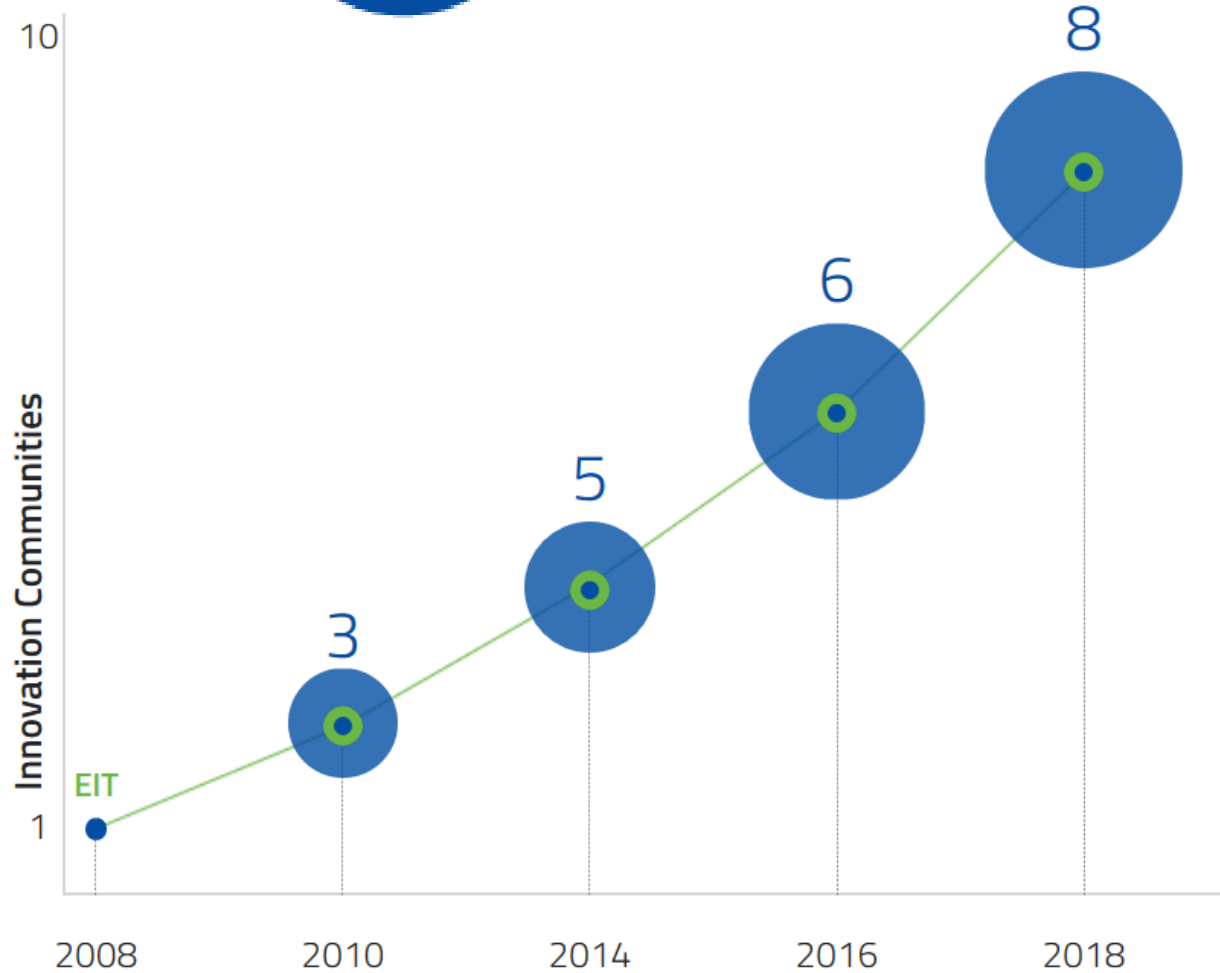


## Partners

Today the EIT Community brings together **more than 800 partners** across Europe, making it one of the most successful **public private partnership projects** within the EU.



READ MORE



## EIT 2014-2020

The EIT is an integral part of the **Horizon2020**.

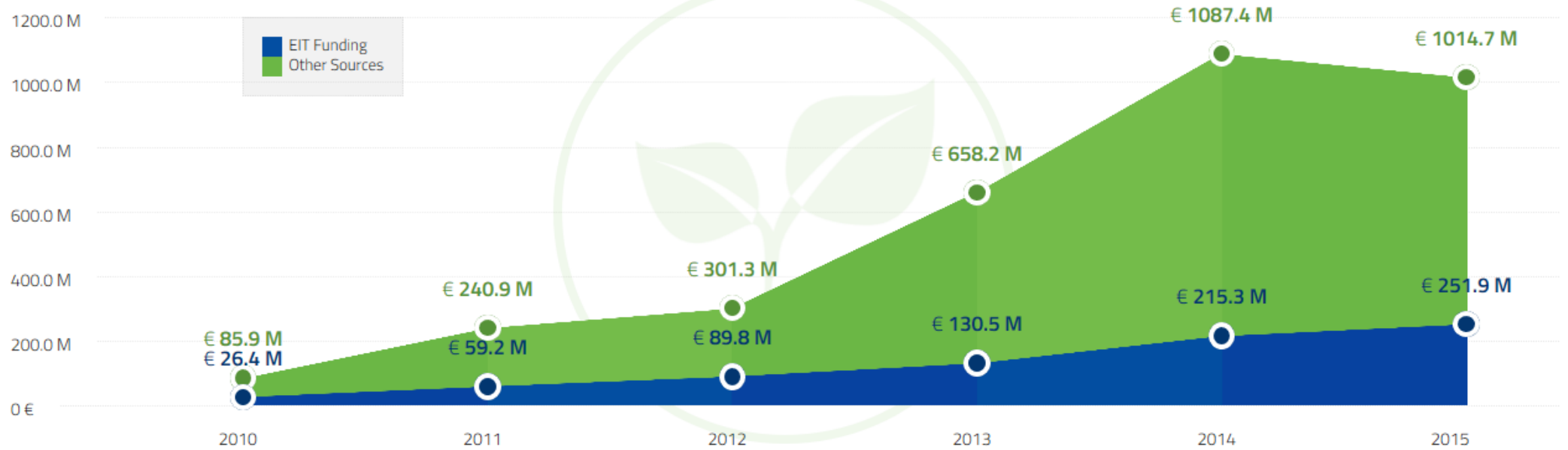
Within this programme, the EIT has been allocated **more than 2.4 billion EUR** to achieve its goals and to further develop its activities between 2014 and 2020.

It is almost an **800%** increase since the EIT's first funding period (2008-2013).

[READ MORE](#)



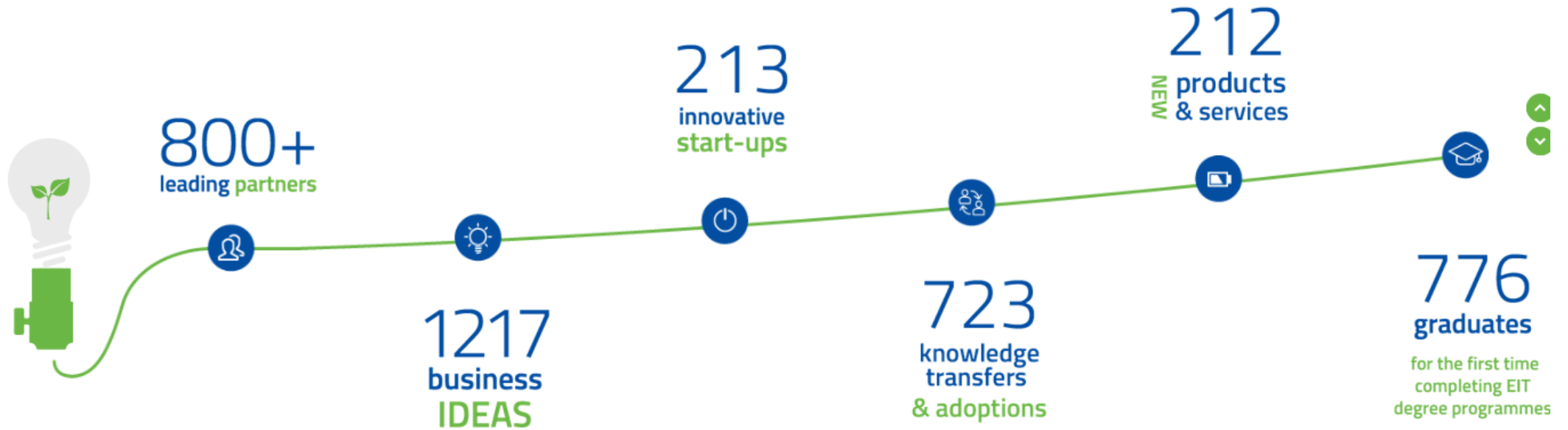
The EIT's smart investment strategy combines **25%** investment from the EIT with **75%** investment from the Innovation Community partnerships.





# EIT Community at a glance

Data: September 2016





European Innovation  
Partnership on Active  
and Healthy Ageing  
PARTNER PLUS



EIP ON AHA  
REFERENCE SITE  
☆☆☆



European Institute of  
Innovation & Technology

2014-2020

Proposed budget of EUR 2.7 billion

**Strategy 2021 – 2027**

**Four strategic objectives:**

- We will foster, grow and further strengthen sustainable innovation ecosystems across Europe by connecting people, disciplines, sectors, organisations and resources;
- We will bring new solutions to global societal challenges to the market by integrating business, education and research;
- We will continue to nurture entrepreneurial talent and enhance skills and competences for a strong, inclusive and open entrepreneurship and innovation culture
- We will share innovative practices and learnings widely and contribute to innovation policy design in Europe



## Knowledge and Innovation Communities (KICs)

2010

- EIT Climate-KIC: addressing climate change mitigation and adaptation
  - EIT Digital: addressing Information and Communication Technologies
  - EIT InnoEnergy: addressing sustainable energy
- 

2014

- EIT Health: addressing healthy living and active aging
  - EIT Raw Materials: addressing sustainable exploration, extraction, processing, recycling and substitution
- 

2016

- EIT Food: addressing sustainable supply chains from resources to consumers
- 

2018 - the EIT has launched a call for two new Innovation Communities

- EIT Urban Mobility ?
- EIT Added-value Manufacturing ?

## EIT Health Co-location Centres

EIT Health has formed six Co-location Centres across Europe, with Headquarters based in Munich:

- London (UK/Ireland)
- Stockholm (Scandinavia)
- Barcelona (Spain)
- Paris (France)
- Heidelberg (Germany)
- Rotterdam (Belgium-Netherlands)

EIT Health also includes 92 associate partners and 6 “InnoStars” regions in Wales, Portugal, Poland, Hungary, Italy and Croatia.





European Innovation  
Partnership on Active  
and Healthy Ageing  
PARTNER PLUS



EIP ON AHA  
REFERENCE SITE  
☆☆☆



## EIT Health Partners

EIT Health leverages the expertise of more than 140 leading organisations spanning key areas of healthcare, such as pharma, medtech, payers, research institutions and universities.

Connecting our partners' knowledge and competence, we accelerate collaborations in cutting-edge projects, develop health education for the future and speed up new business development.



## Promote healthy living

### Self management of health and life style interventions through:

Development of solutions and education programmes that enable individuals and their families to take charge of their own health – by detecting early signs of disease and by being better equipped to understand and monitor their own treatment.

Development of products, services and citizen-oriented strategies to encourage positive lifestyle changes, including the development of business models for preventive care.

### Support active ageing

#### Making workplace interventions and overcoming functional loss through:

Development of programmes and solutions to optimize the workplace environment and work experience, to improve employability.

Development of solutions for age-related metabolic, motor and cognitive dysfunction at home and at work, in urban and rural environments, to allow for extended periods of independent life.

### Improve healthcare

With **innovations and a patient-centric approach** involving: Integration of services across the continuum of care, with a particular focus on patients with multiple chronic diseases, using approaches such as big data or new technologies.

Development of methods, solutions and concepts for improved treatment and management of chronic diseases.



ACTIVITY AND PROJECT EVENTS

CLC/INNOSTARS EVENTS

CORE EVENTS

EIT HEALTH AT OTHER EVENTS

STATUTORY EVENTS



## Praça Vida+

Coimbra, Portugal, 20 Jul 2018 - 22 Jul 2018

Time: 14:00 - 19:00



**praça  
vida+**





PORTO 4 AGEING



European Innovation  
Partnership on Active  
and Healthy Ageing  
PARTNER PLUS



EIP ON AHA  
REFERENCE SITE  
☆☆☆



emcosta@ff.up.pt  
porto4ageing@reit.up.pt  
[www.facebook.com/Porto4Ageing/](http://www.facebook.com/Porto4Ageing/)

